

CND-60用 油圧ポンプ



sinto
新東工業株式会社

新東は安全と環境に配慮した製品をお届けします。







1-11-70 70-11-1

1390A000

KCM 100 RIV 96 LWS

NSK

BE

FYH

UCP2000
13

Handwritten text on a label: 7411-1157

インペラーブレード

WA-P 0099

8枚入



SHIBUO

株式会社



CYCLO DRIVETM

MODEL CHHM15-4195-59

RATIO 59

SERVICE FACTOR

INPUT 12 kW 1800 rpm

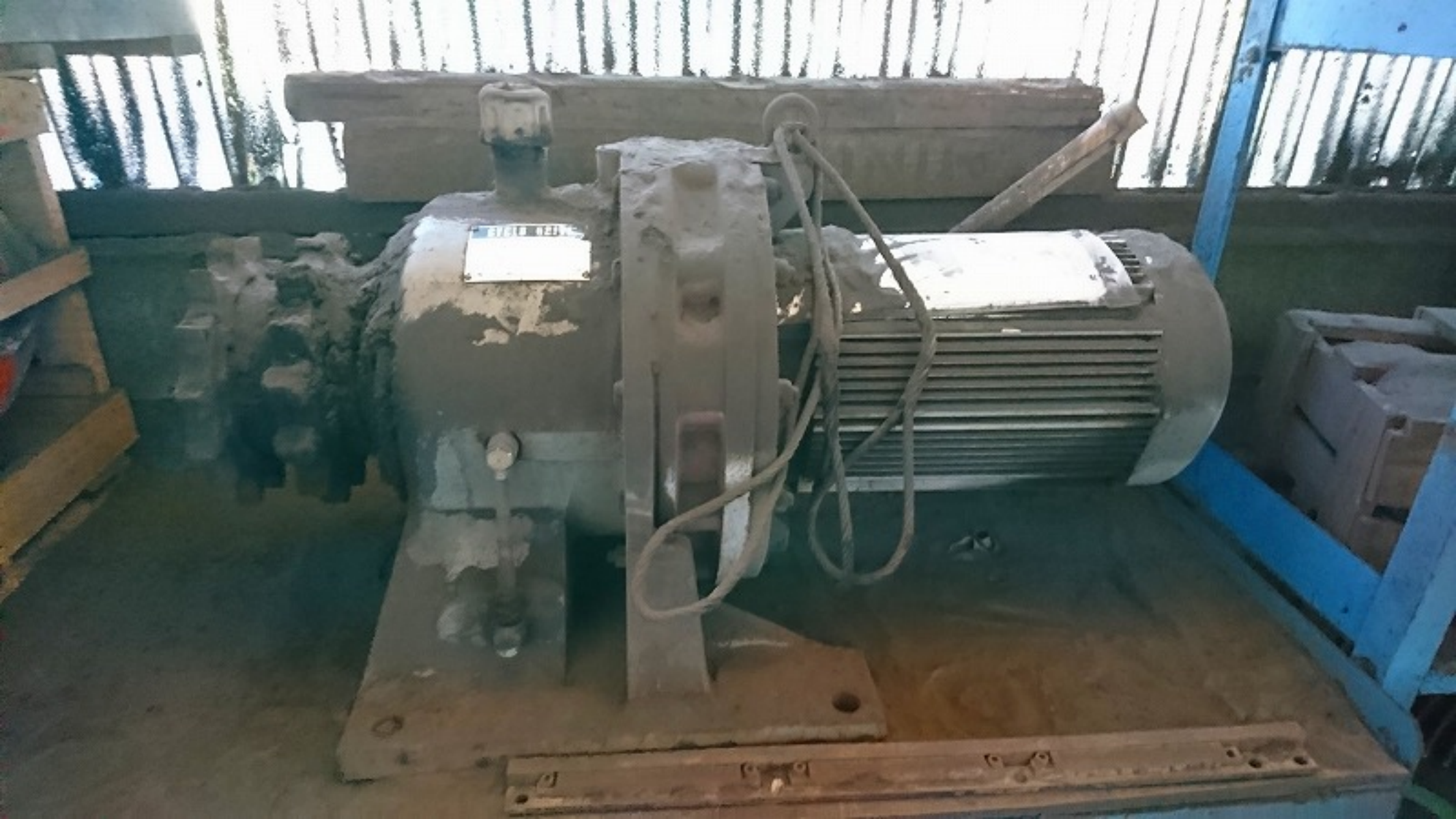
OUTPUT TORQUE kgf·m

SERIAL NO. C8142620..



Sumitomo Heavy Industries Ltd.
JAPAN

AN50963



ブレーキ手動式 約 20kg



3PHASE INDUCTION MOTOR WITH BRAKE				TK-F	/CMB-10
1.5	KW	4	P.	TYPE	
2.00		200		FRAME	E-132M
50		88		M/B INS. CLASS	E/8
29.5		27.5		WATING CONT.	
180		1700		SHIELD BEARING	6308
1.2		1.3			6307
5.0	kgf m		RULE		JIS C 4004
1.9		0.721			JP
SERIAL NO. 4190721					
SUMITOMO HEAVY INDUSTRIES LTD.					
JAPAN 100 JCA					

CYCLO DRIVE

MODEL HM 10 — 906 B RATIO 187

SERVICE FACTOR

INPUT 7.5 kW 1500/1800 rpm

OUTPUT TORQUE RATING 900 kgm

SERIAL NO 4136043

UMITOMO

HEAVY INDUSTRIES, LTD.

JAPAN





E-9-88





HITACHI

TYPE
SPEED 50Hz

RATING

MOTOR

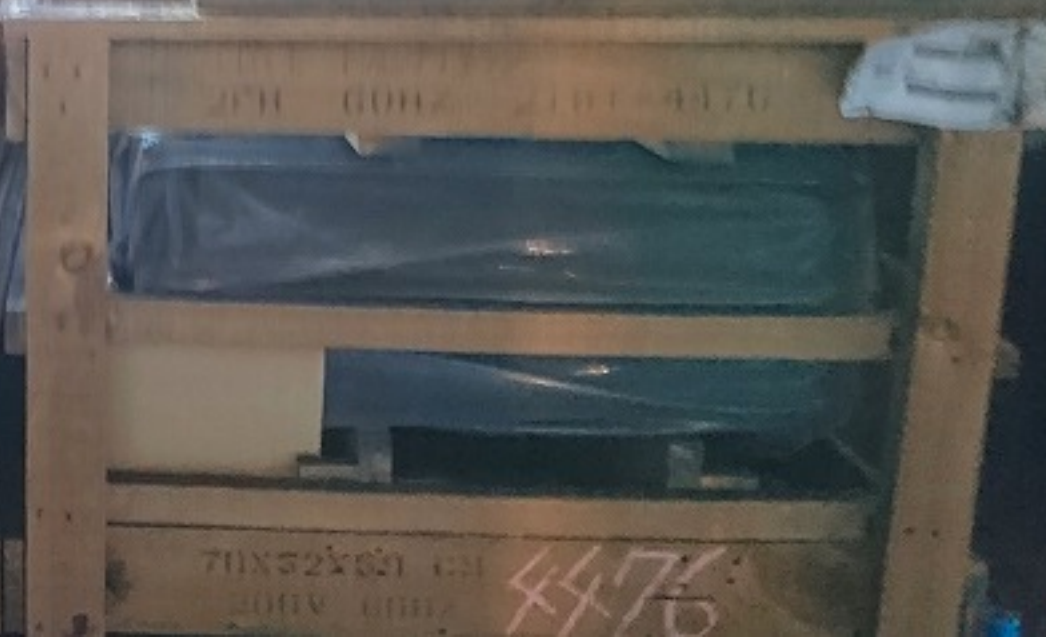
R A I L

MEG.No

© Hitachi Industrial E

Systems Co

Model					
Rated Power	HP				
Rated Voltage	V				
Rated Current	A				
Rated Speed	rpm				
Rated Torque	Nm				
Efficiency	%				
Power Factor					
Insulation Class					
Frame Size					
Terminal Box					
Weight	kg				
Dimensions	mm				



70X52X30
4476



HOIST

CH ELECTRIC CHAIN HOIST

1001 ELECTRIC CHAIN HOIST
 AMB -107
 40 °C
 44
 87 kg
 2014
 150
 2
 89 mm
 2.9
 10
 M4
 500V 17A
 50/60Hz
 1250H
 14803308
 1001