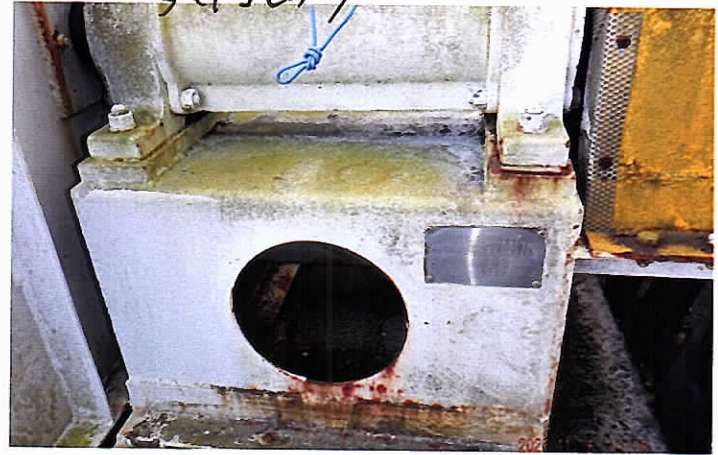
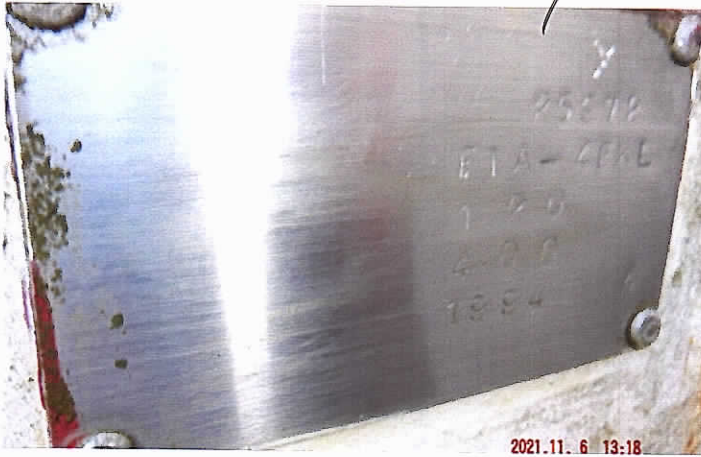
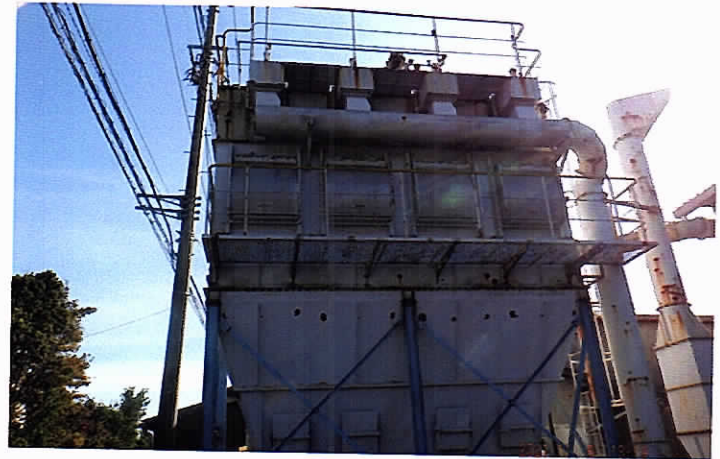




25-72V 1500W / 2021.11.06 新田 VDC824PS-160 15+
3.25x1.5







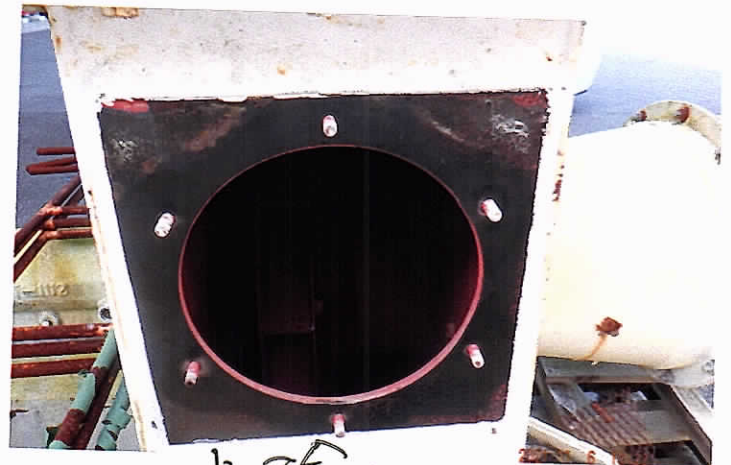
工場 9124

道路 9124



12-54-11247

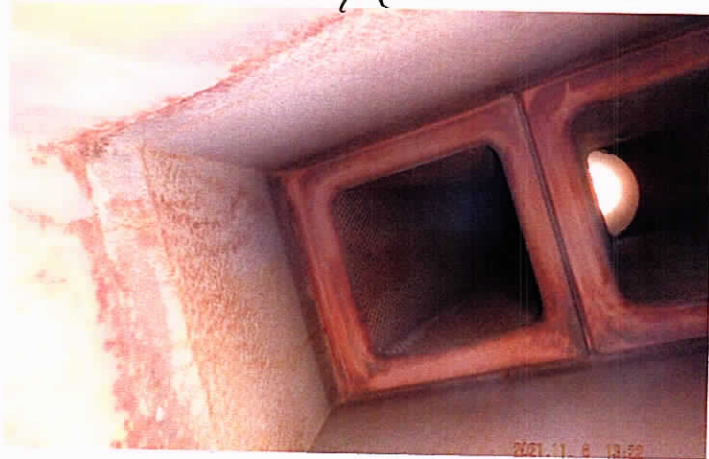




石炭炉



722 2号

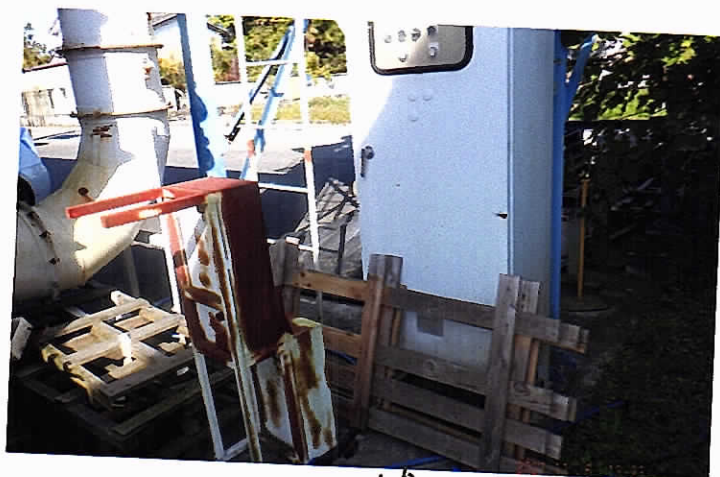


ハイブ2号 -

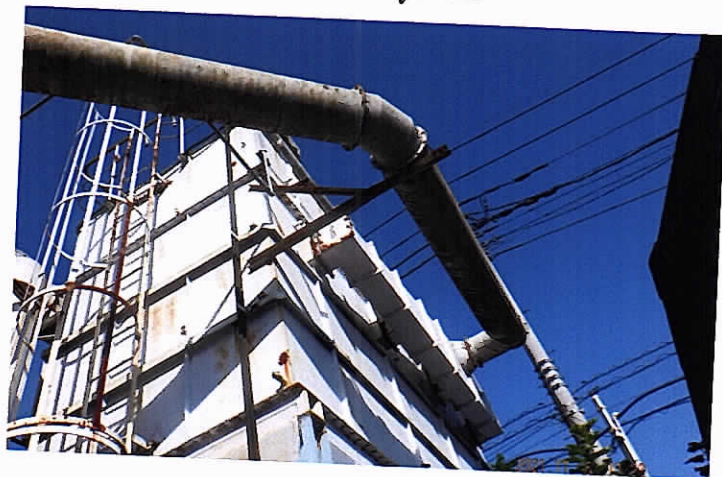




↑↑↑↑

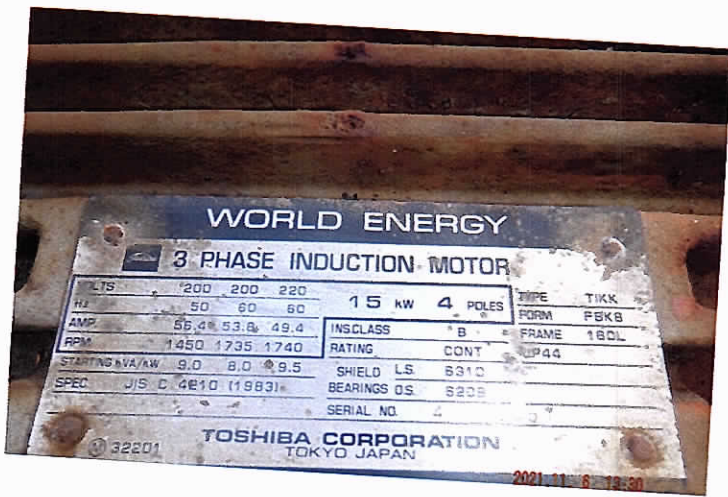


↑↑

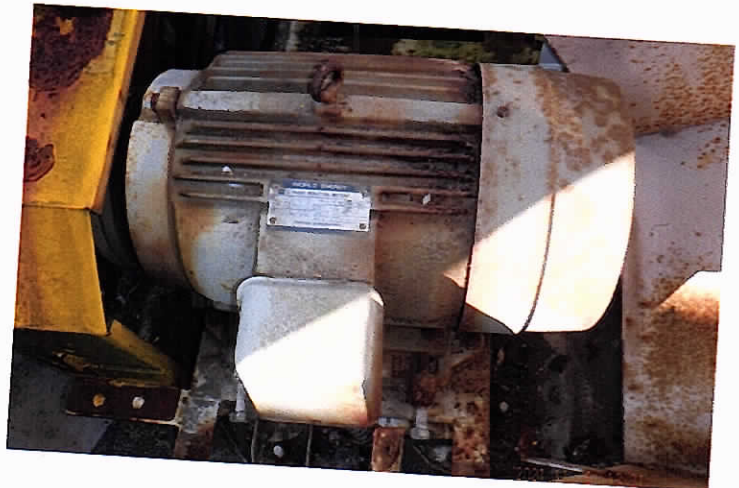
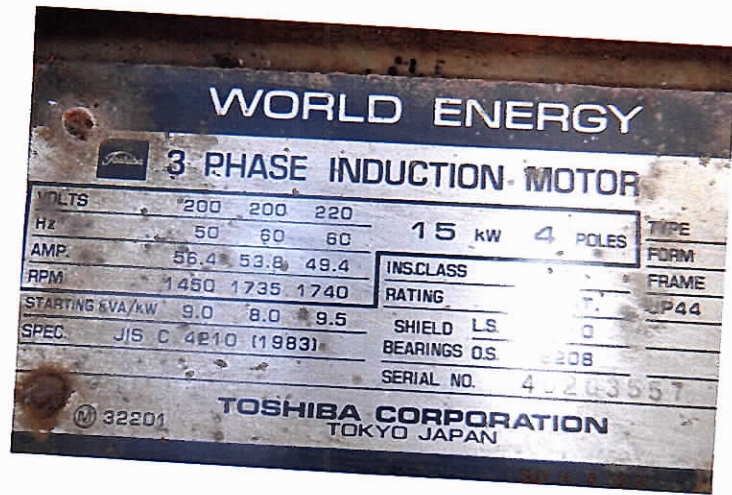


↑↑↑↑

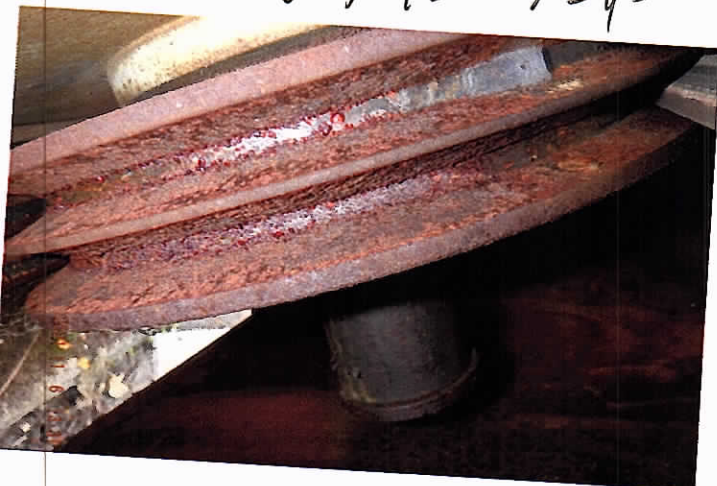




エ-9-15kW x 4P



エ-9 18DL 70-4-





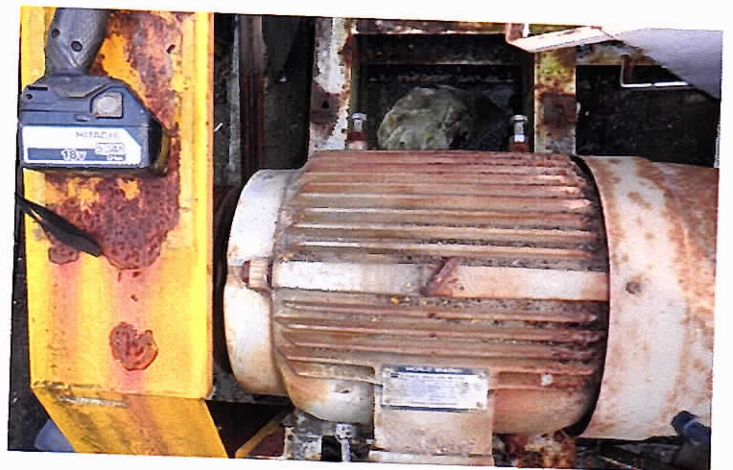
3차기-4B11 V 2-4-



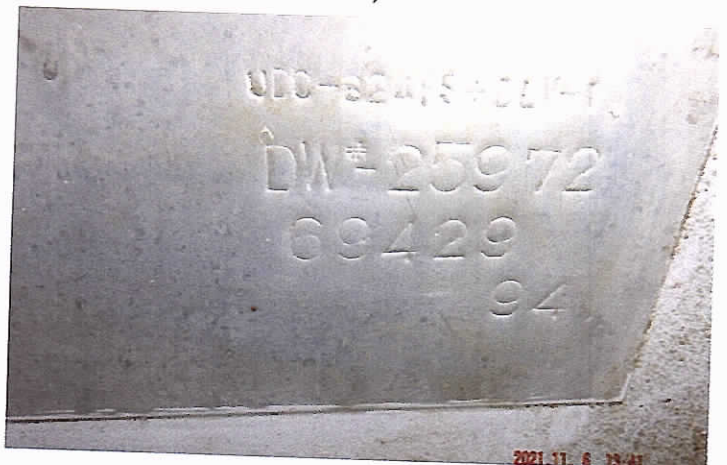
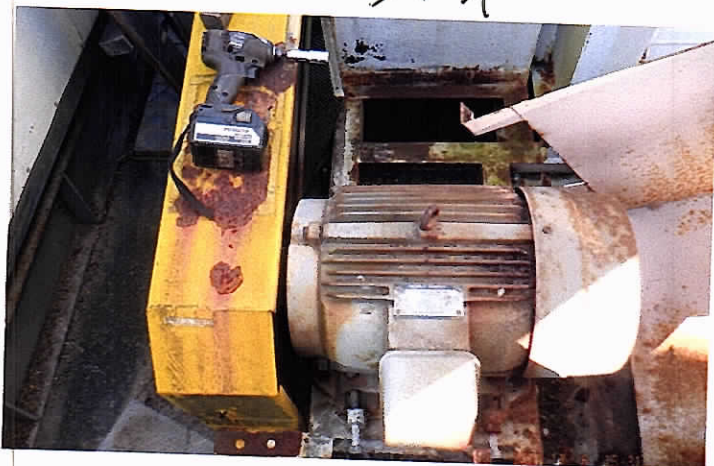
3차기 2차 물 받기

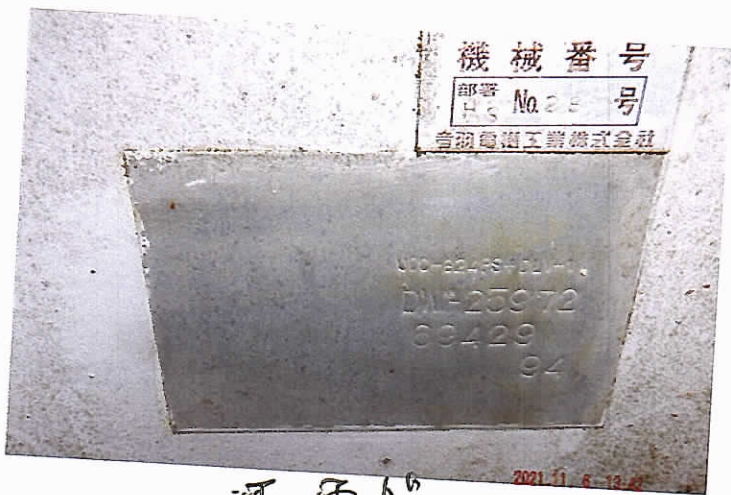


3차기



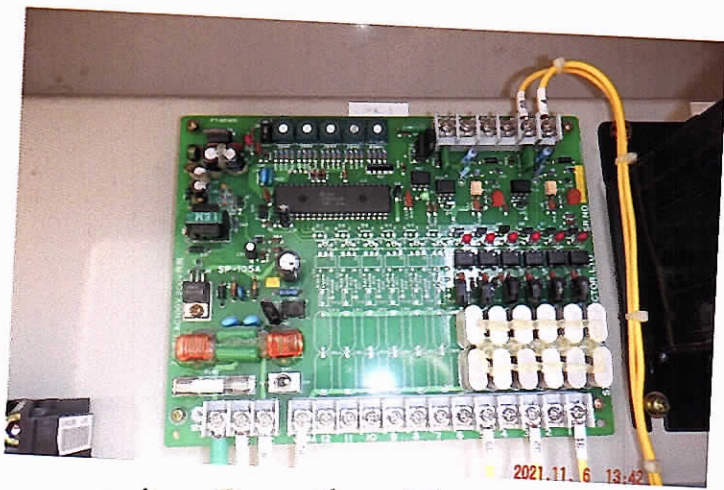
2-4 -



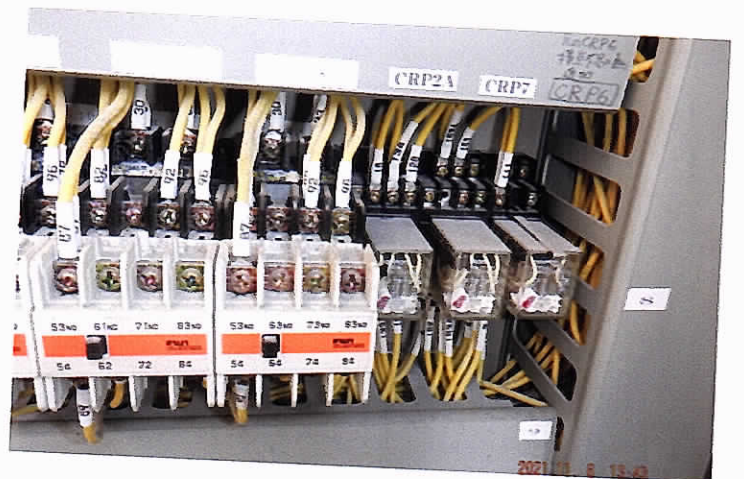
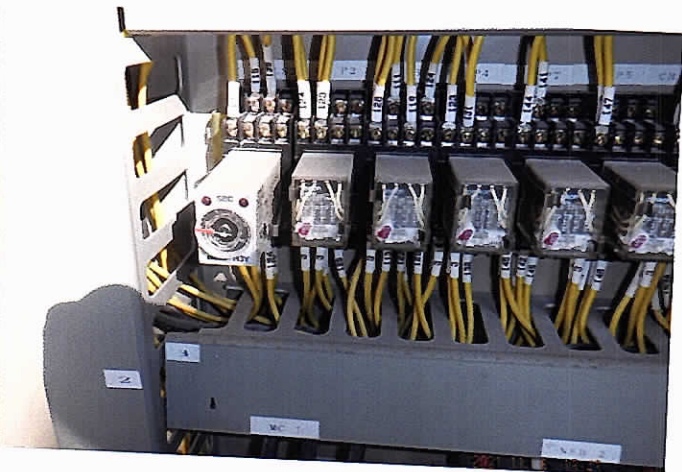
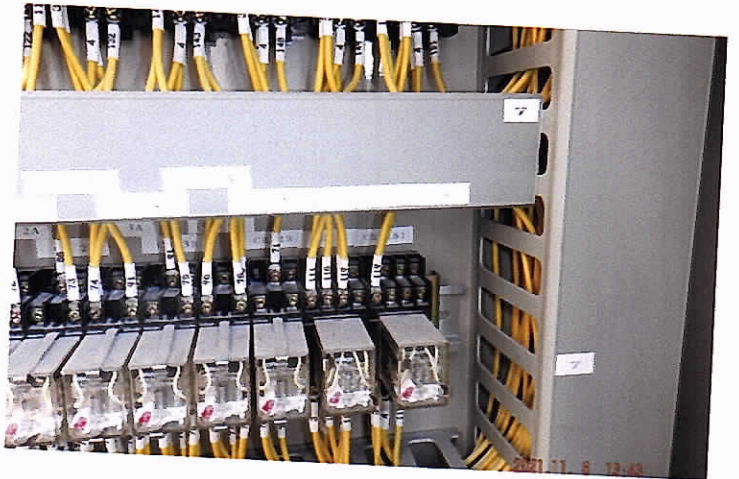
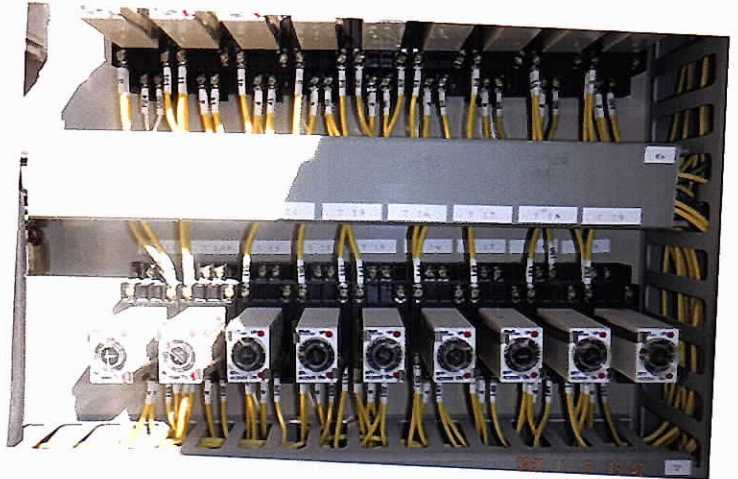
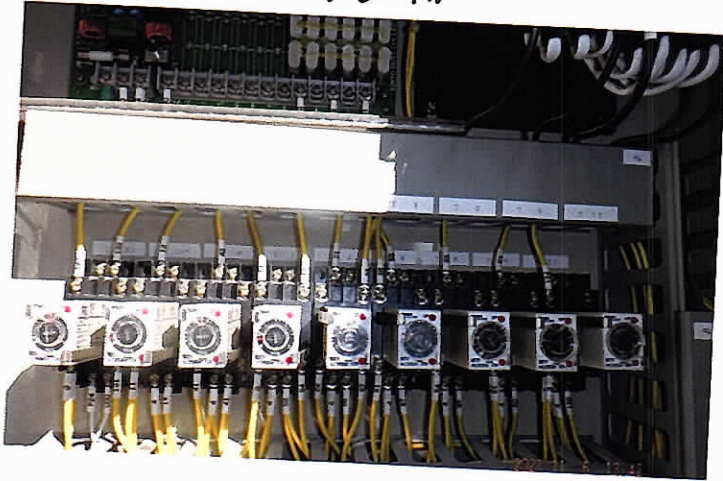


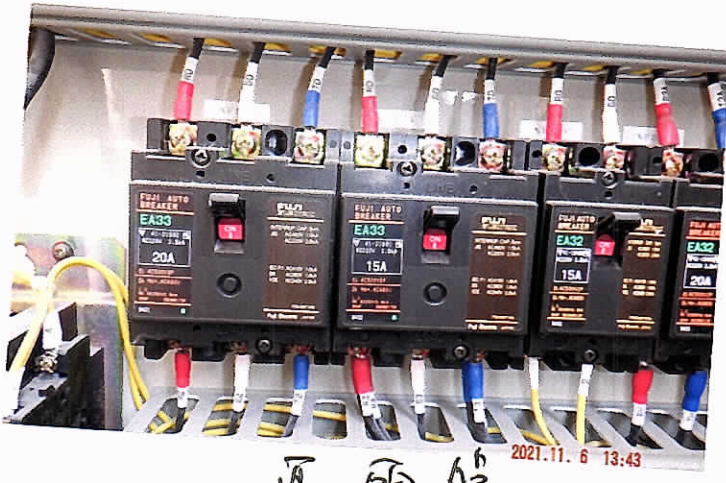
配電盤



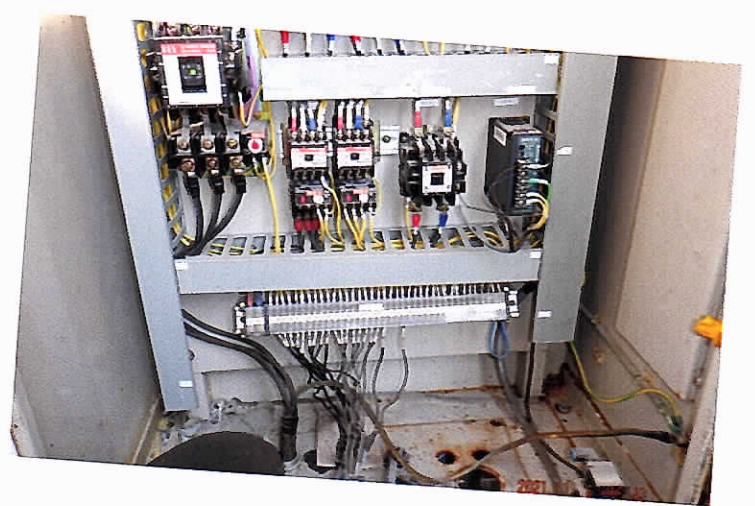
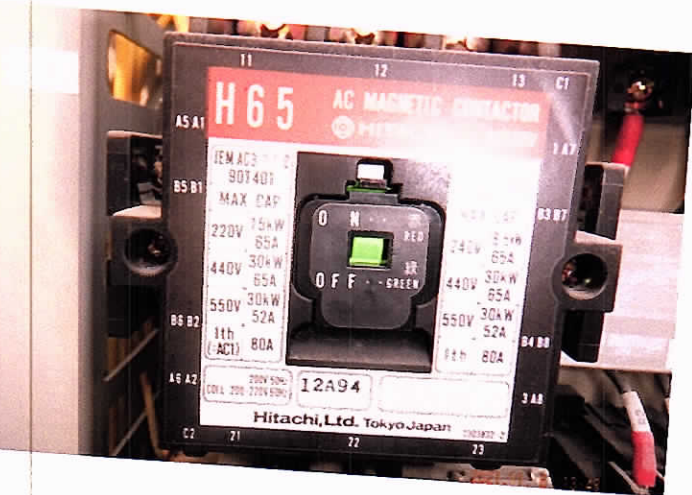
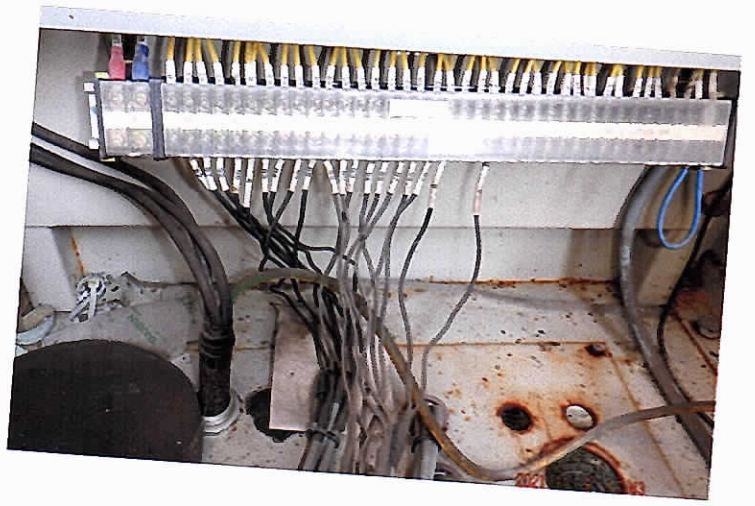
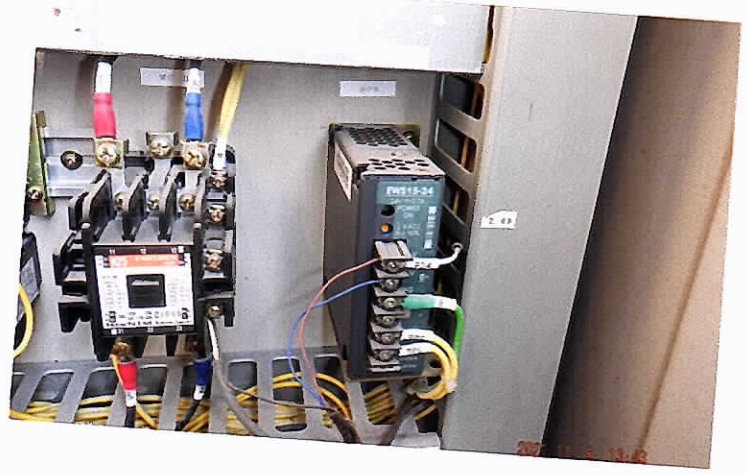
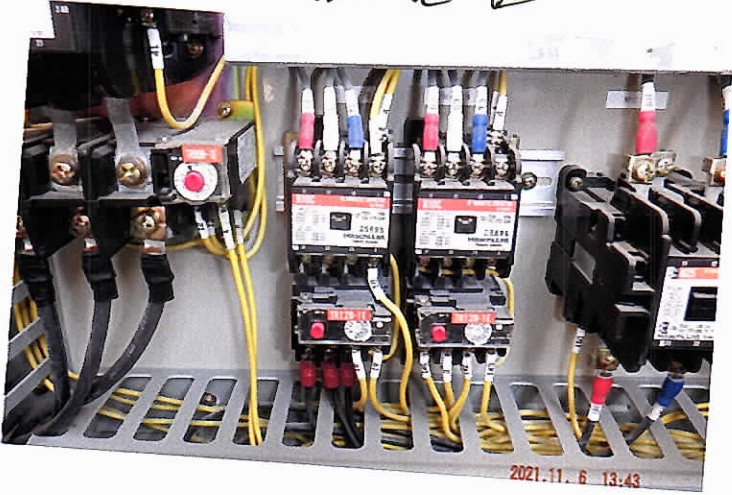


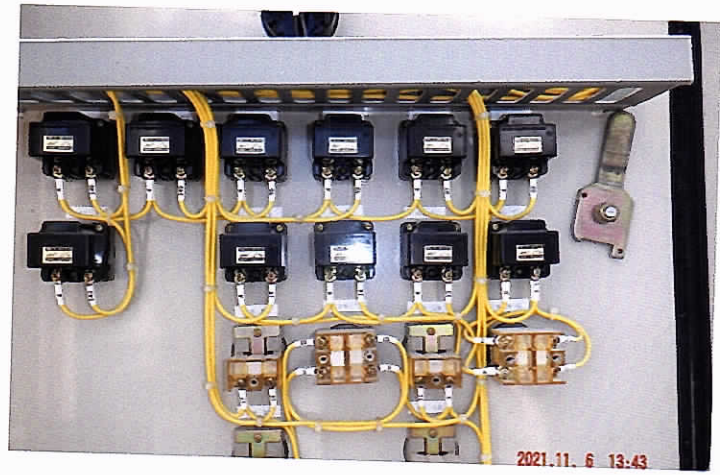
110W 基板





配電盤





空箱





32-1-291/2-2291P-



道路側 点検 / BH / 点検



2021.11. 6 13:50



2021.11. 6 13:50



2021.11. 6 13:50



2021.11. 6 13:50



2021.11. 6 13:50

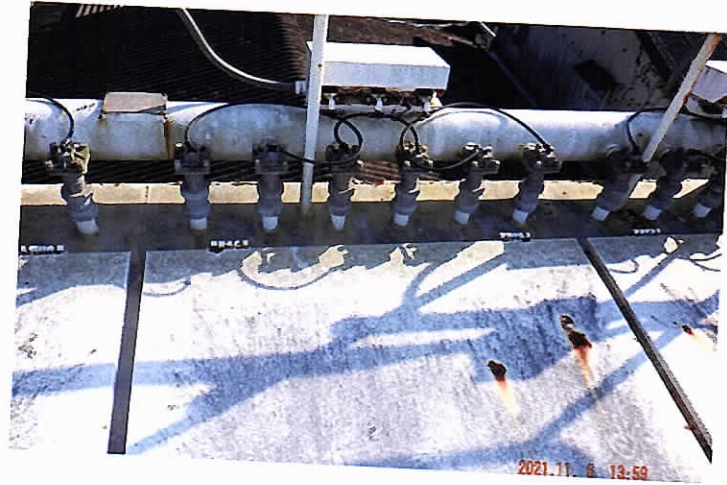


2021.11. 6 13:50

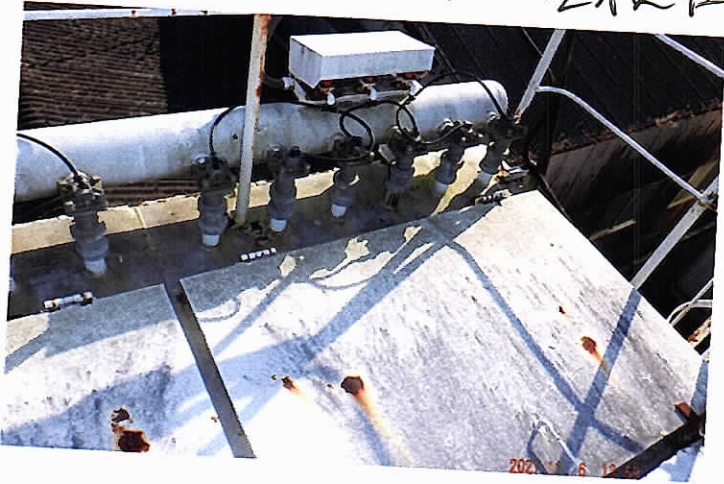


2021.11. 6 13:59

100V 電磁弁 点検口



2021.11. 6 13:59



2021.11. 6 13:59



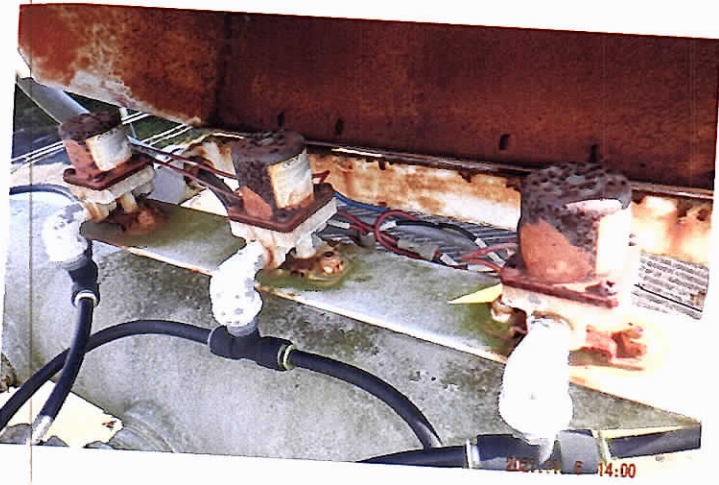
2021.11. 6 13:59



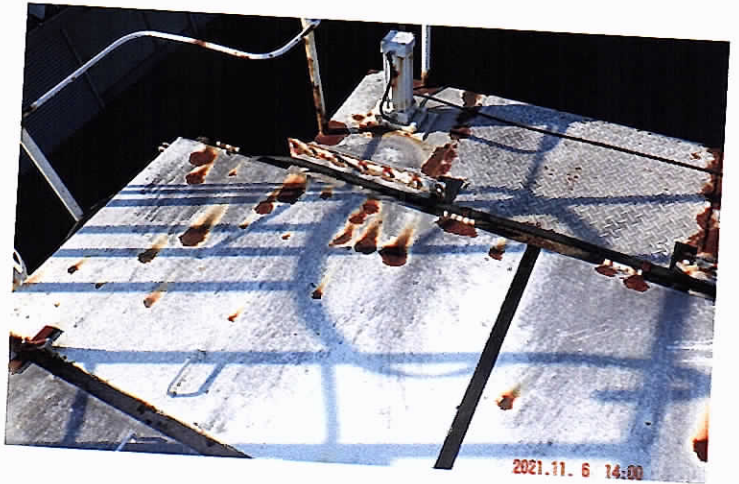
2021.11. 6 14:00



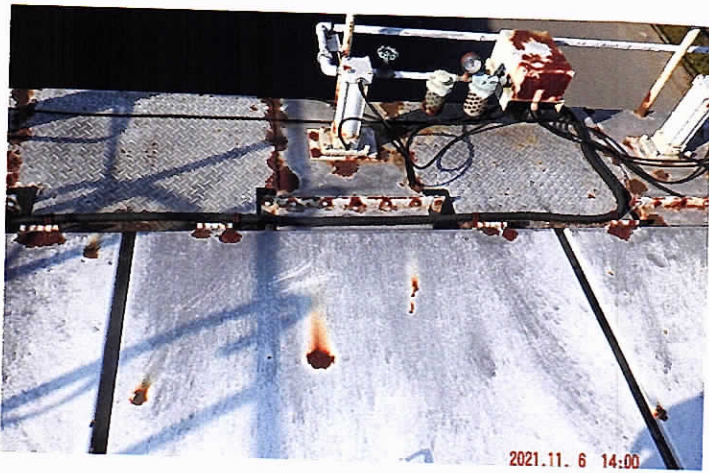
2021.11. 6 13:59



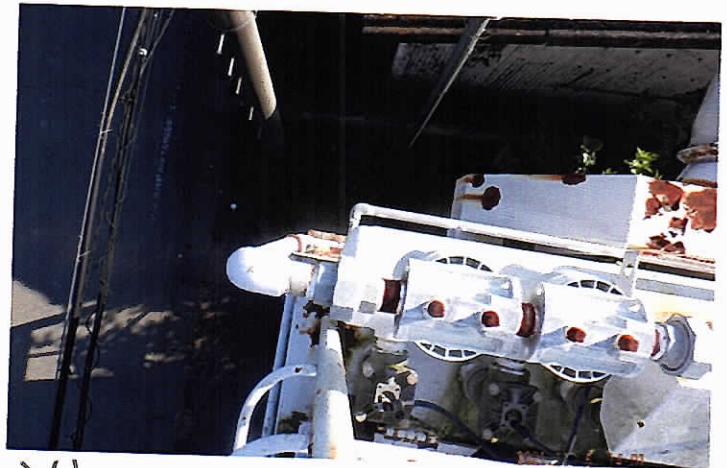
2021.11. 6 14:00



2021.11. 6 14:00



22110-



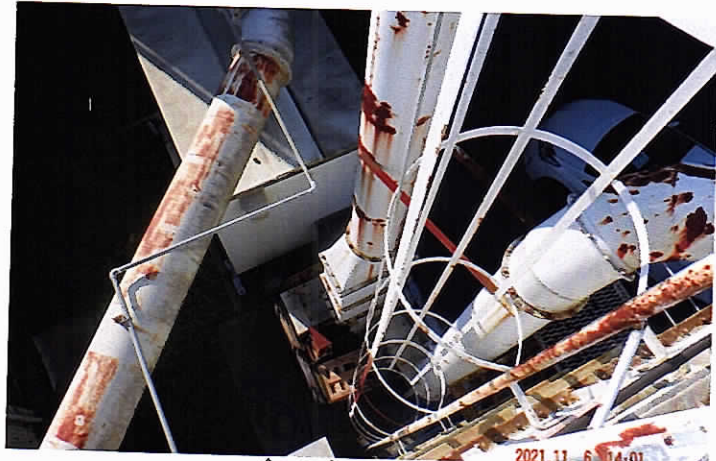
ハワ入 電機弁 5-2 / 印-211



ハワ入



ハワ入

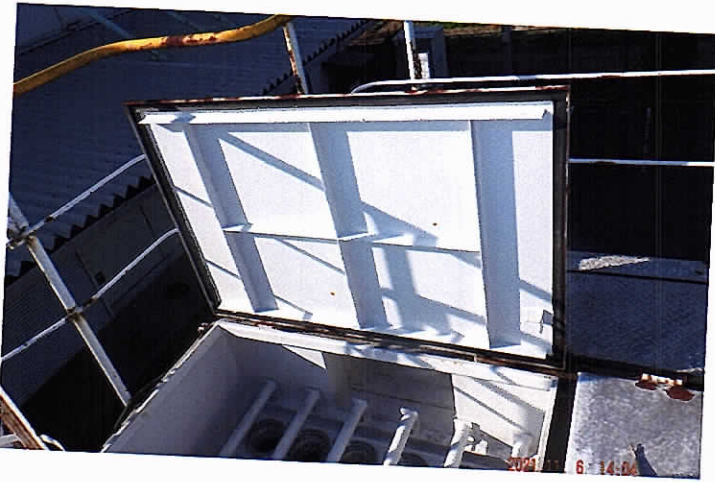
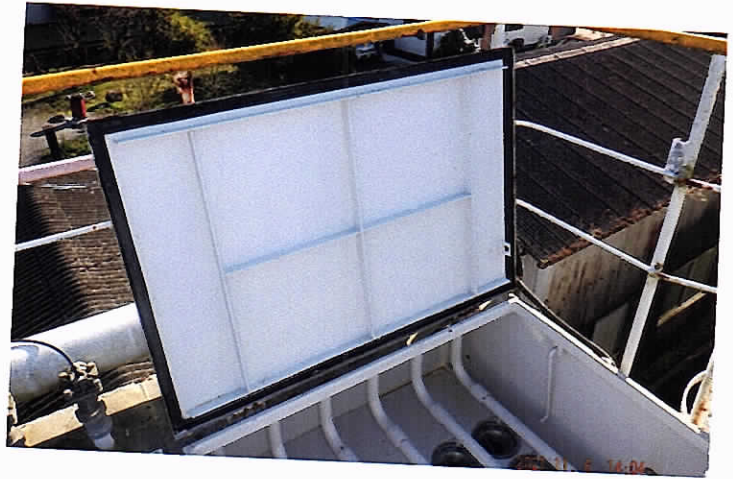


2021-11-6 / 梯子



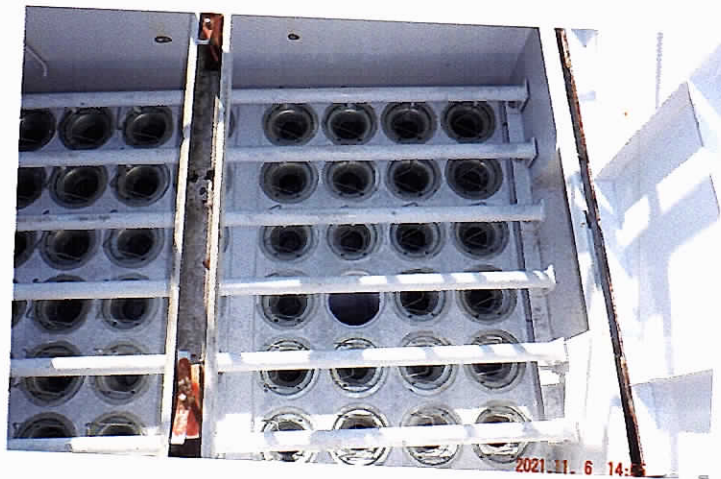


ブロー機(工場側)点検口 内部良好



コンプレッサー (敷地側/高圧場)





工場側 側面





2021/11.06(土) 流印物付 空同直

新製 2250mm x 5310mm

UV 2660mm x 8480mm x 250mm

UPC-824PS-160 型

流印物

①	本体	1	穴部等無し
②	夕外 本体~7P-	1	UV 2660 x 200 7P2 OK
③	UV 2660	1	
④	排気口	1	
⑤	UV 2660	1	
⑥	配電箱 外景	1	

⑦	UV 2660		
⑧	7P2		
⑨	2250mm		流印物付

流印物付
良好