

SMAGHINI

型式 SL44D

株式会社 大阪

05-

1111

M

型式

SL44D

1934.12

製造廠名

11











操作盤
1/20
1/20
1/20
1/20
1/20
1/20
1/20
1/20
1/20
1/20

手動
自動

手動
自動

反転
停止
正転

非常停止

ゼロ調整

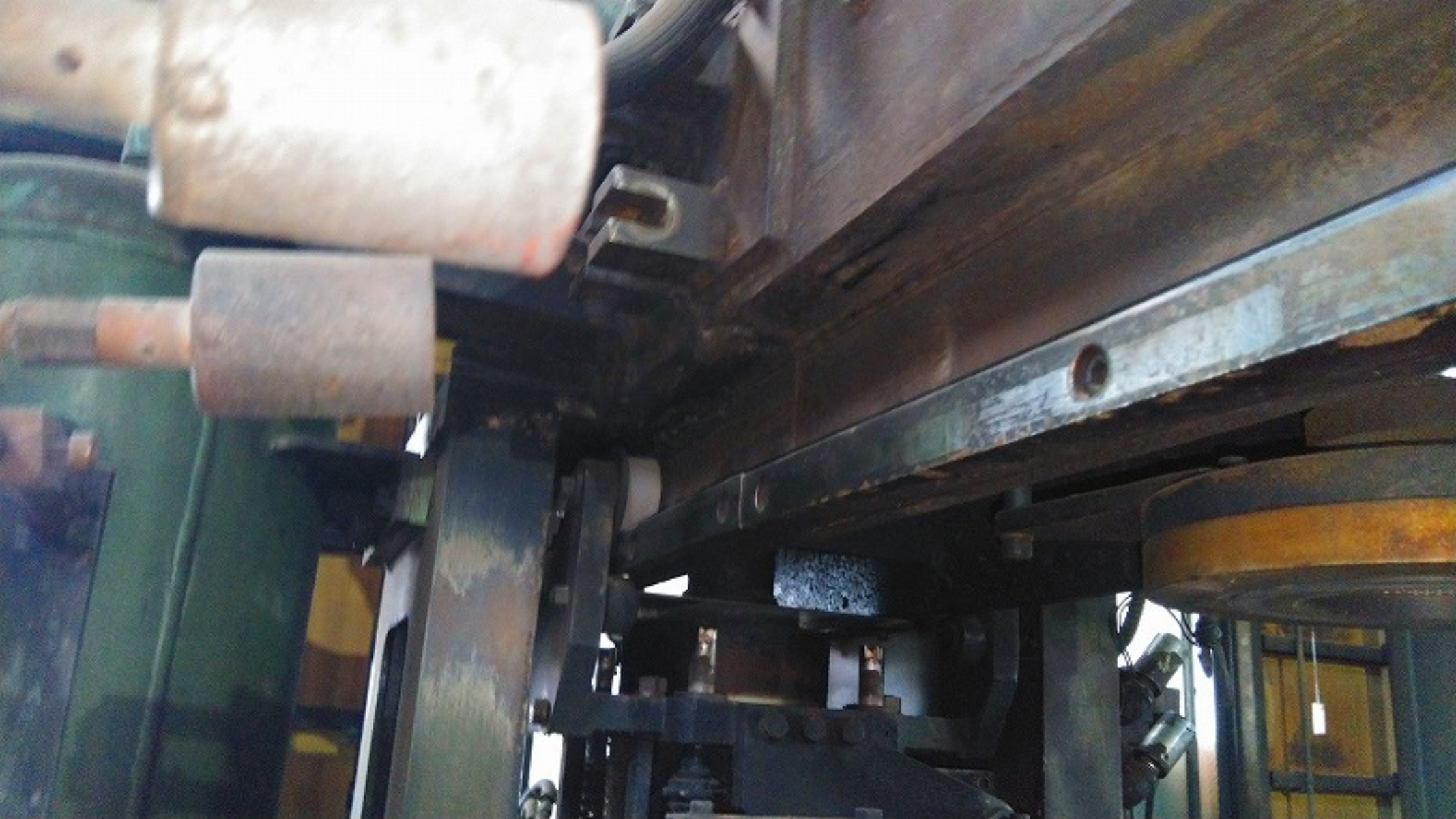
ゼロ調整

ゼロ調整

















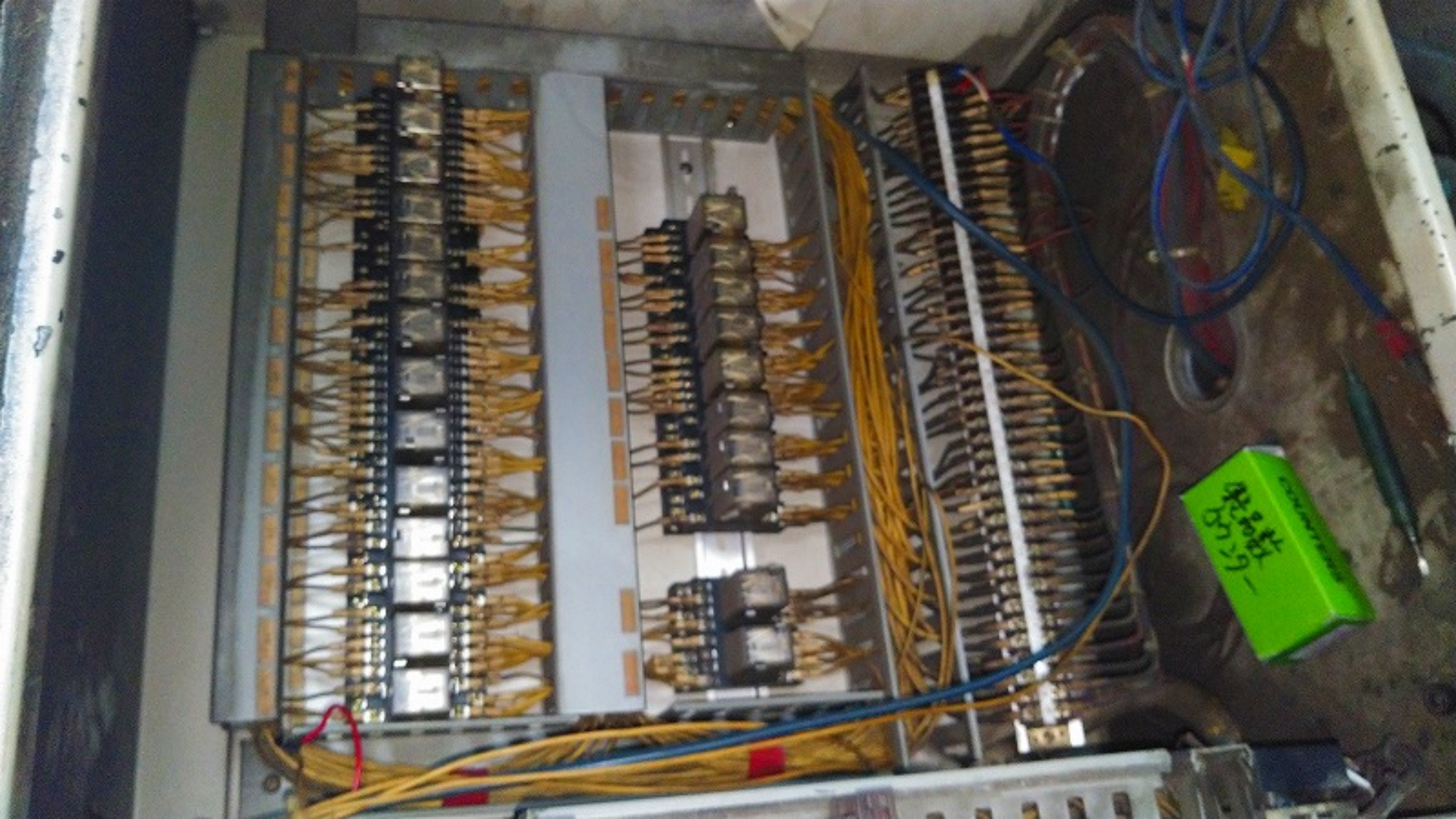












6-10-01
10-10-01

Two Fuji fuse units are mounted on a metal rail. The left unit is a 10A unit with a red switch and a green label that reads "FUJI FUSE UNIT 10A". The right unit is a 30A unit with a red switch and a green label that reads "FUJI FUSE UNIT 30A". Both units have "EVAL AUTO RELEASE" and "ELECTRIC WITH THERM" printed on them. Below the fuses are several yellow terminal blocks with various colored wires connected to them.

A small, rectangular electronic component, possibly a transformer or a small power supply, is mounted on a metal plate. It has several terminals on its side and a label with some illegible text.

A large, rectangular metal box is mounted on a metal rail. The label on the box reads "PHOTO SENSOR" and "AMP UNIT SSAS30". Below this, it lists specifications: "POWER SUPPLY AC 100V/200V", "DC OUTPUT DC 10V 50mA". The manufacturer is identified as "TAKENAKA JAPAN". There are two small indicator lights on the top left of the box.

A series of electronic components are mounted on a metal rail. From left to right, there are two white rectangular units with circular ports, followed by three yellow units with circular ports, and finally a yellow unit with a circular dial and a red needle. The rail has some Chinese characters and numbers printed on it, including "1-1" and "1-2".