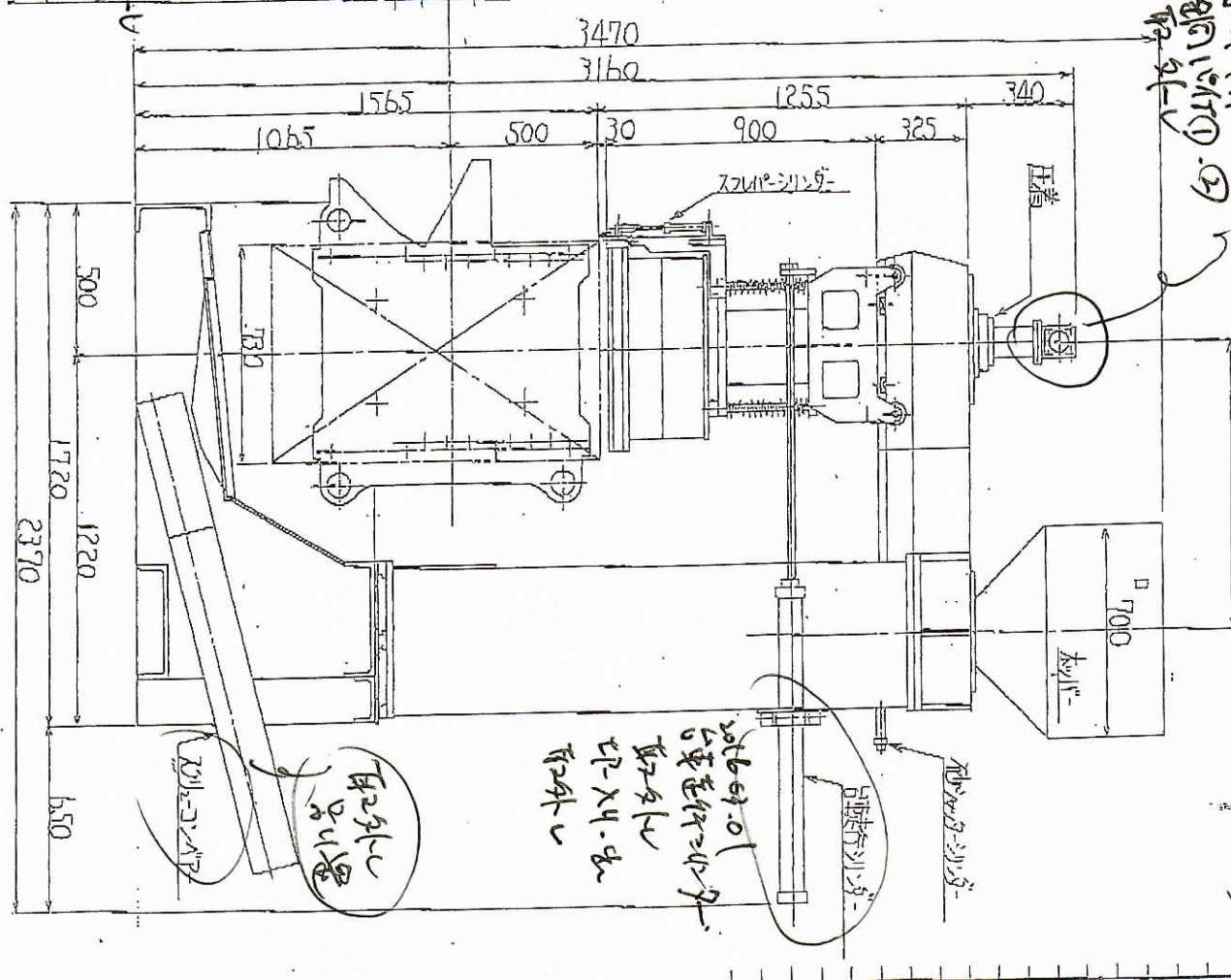
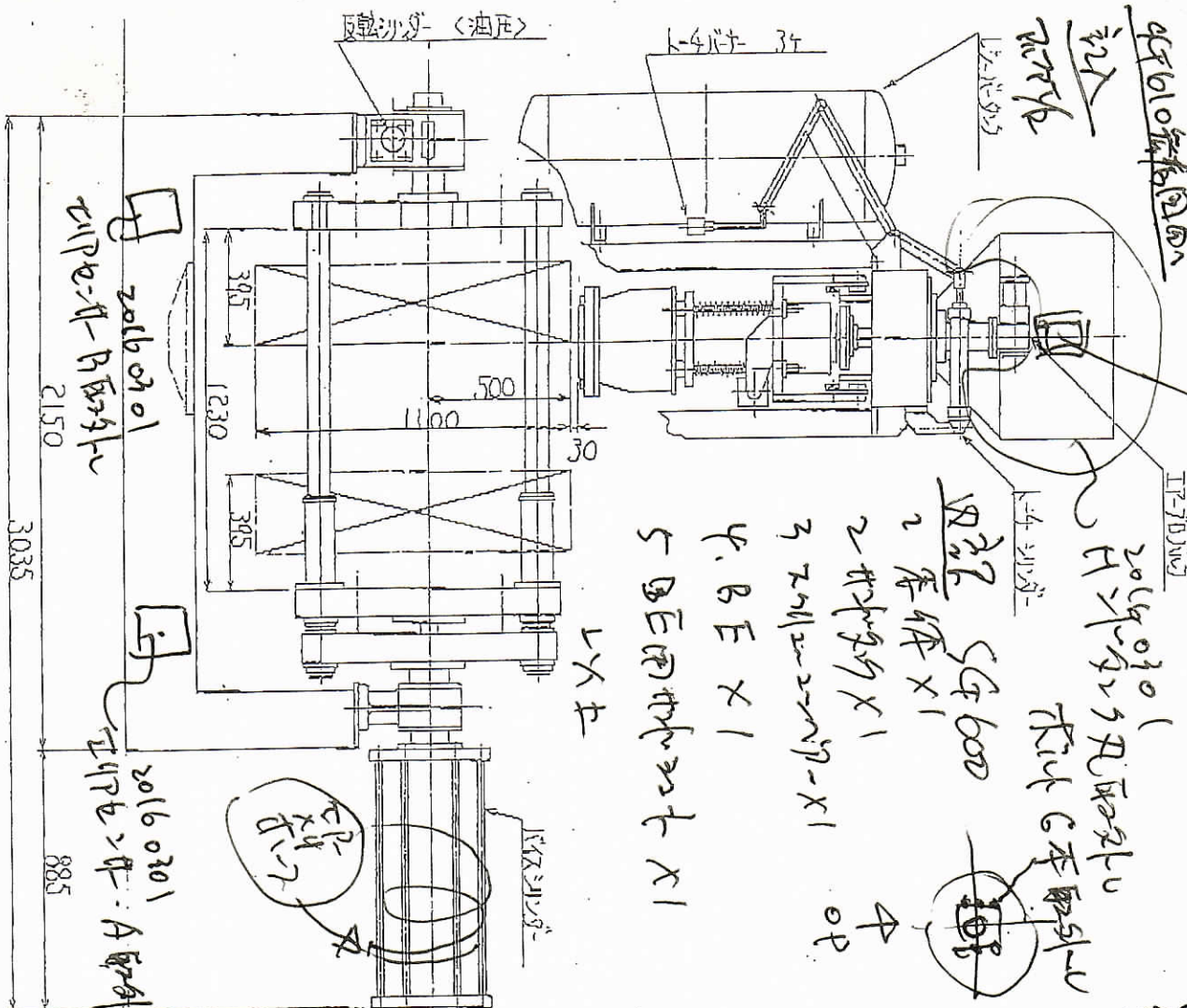


20160301 20160301 20160301
 20160301 20160301 20160301
 20160301 20160301 20160301

20160301
 20160301
 20160301

20160301
 20160301
 20160301

20160301
 20160301
 20160301



大阪シエール
 OSAKA SHELL INDUSTRY

品番	仕入	仕入	仕入	仕入	仕入
△	△	△	△	△	△

20160301
 20160301

20160301
 20160301

20160301
 20160301

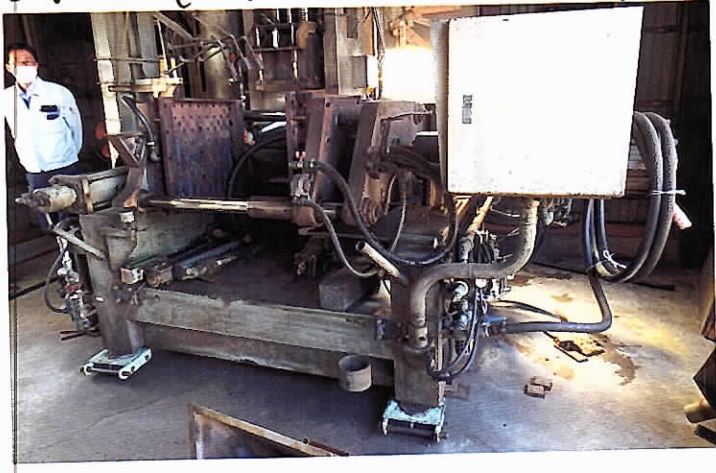
20160301
 20160301

20160301
 20160301

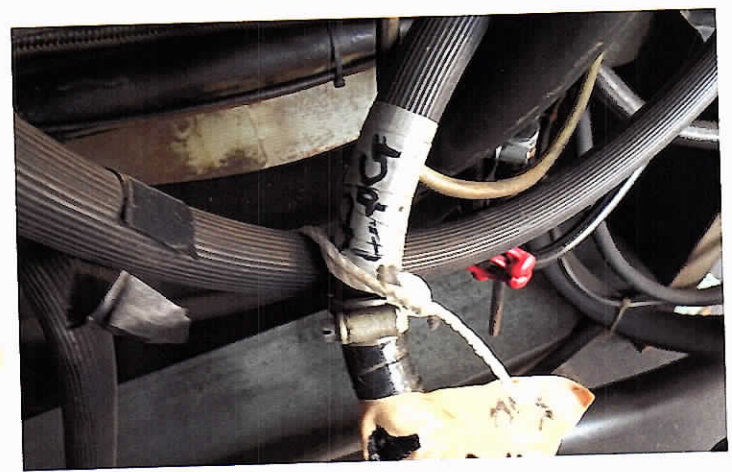
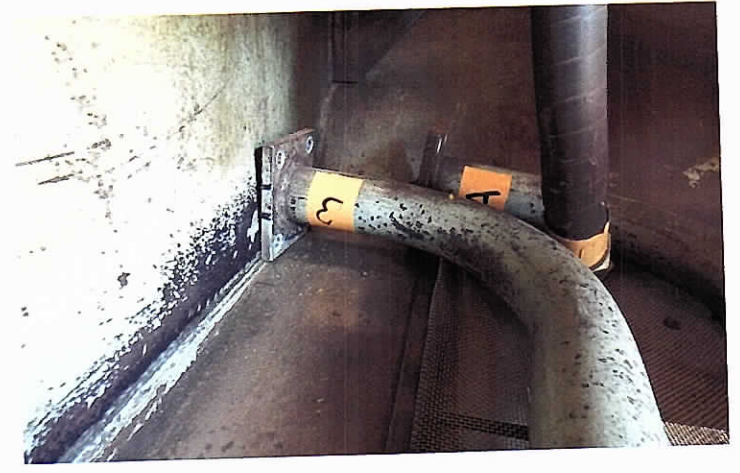
20160301 54600 322223180

①/3 ②/3 13FX

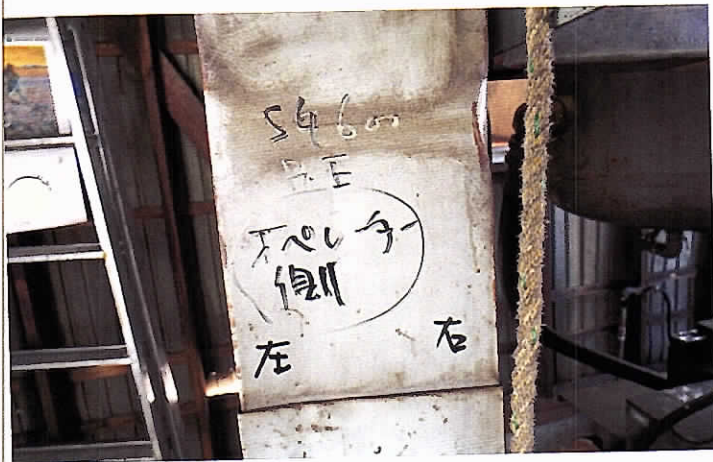
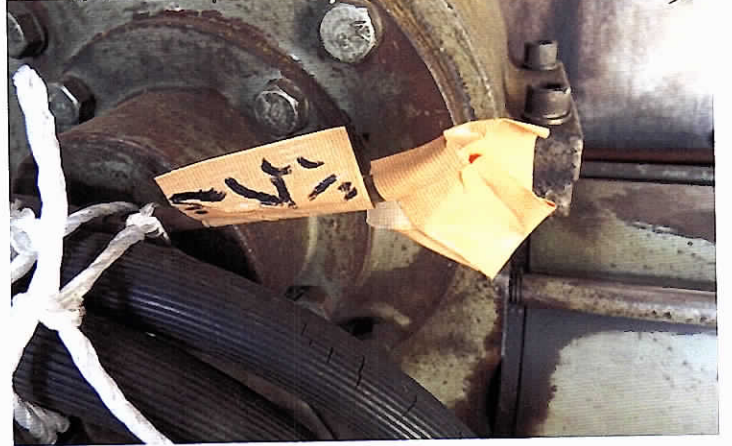
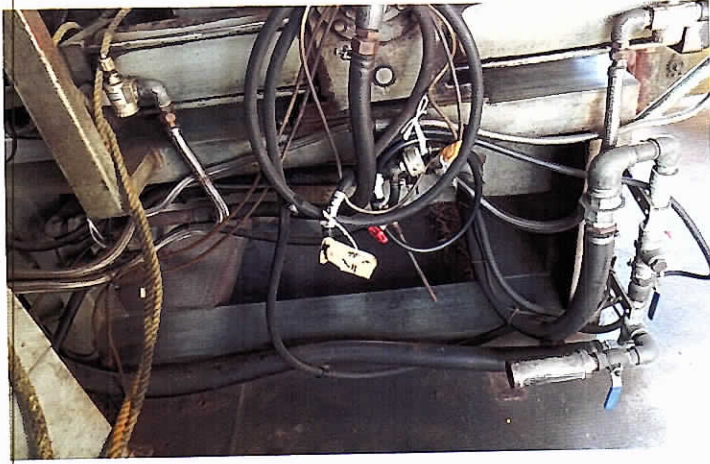
③/3



117777 左 B 右 A



管線ハットエッジ入り 3相 (2/3)



≡エッジ側

BE 不許エ カムT-70止め



ガ2 x11

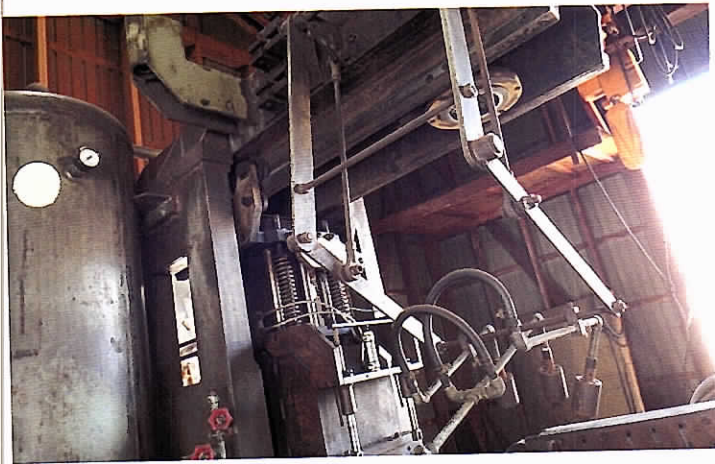


台車走行部への付外工事の取付

3/23

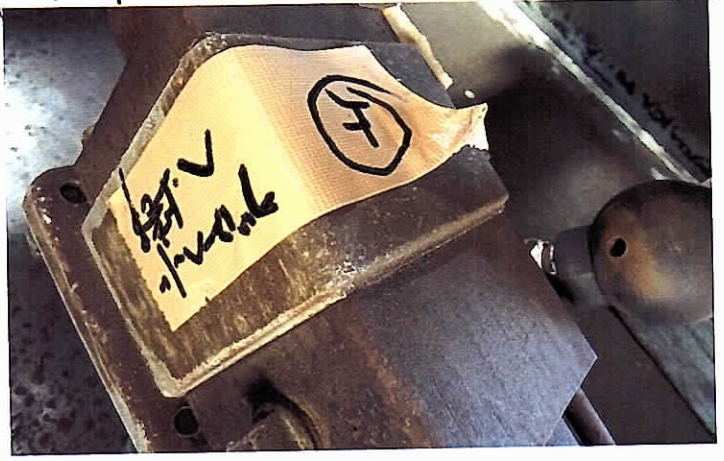


SG600 付外工事-上部取付



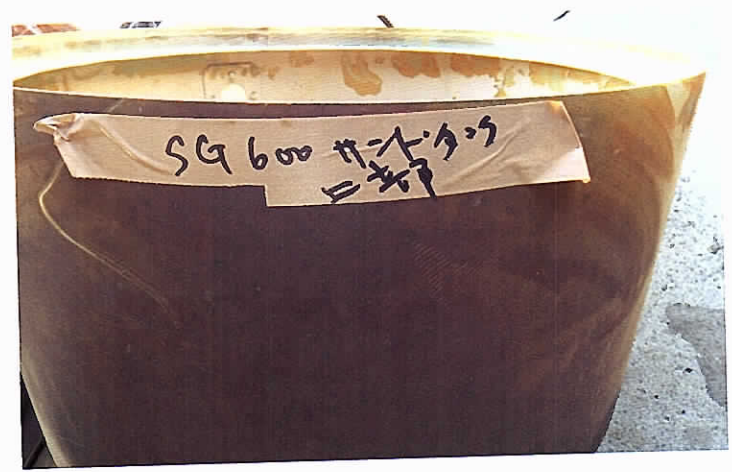
7.12. 八木: 圧着用印一掃 取外し

(4/3)



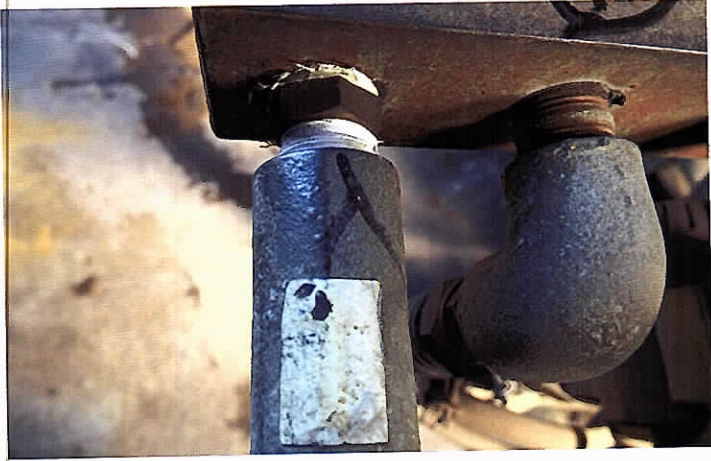
圧着印一掃 4本上

圧着印一掃 銅1000(1.2) 2本

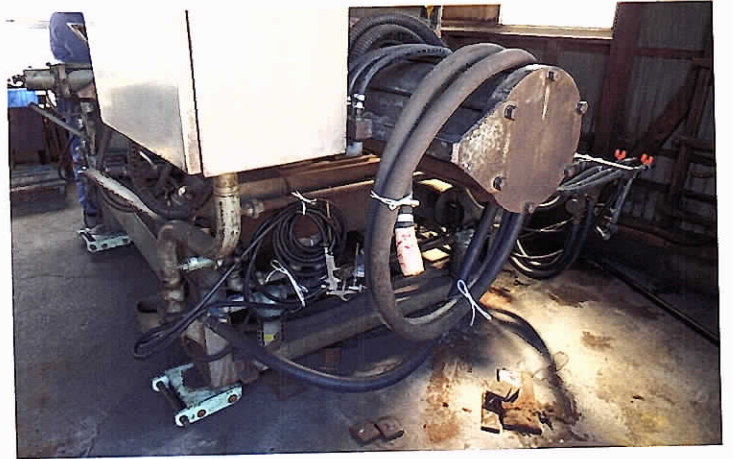
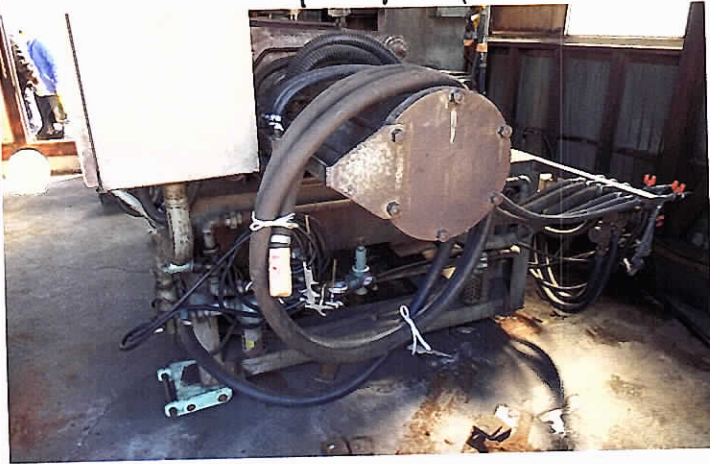


SG600 水 (A)

出 (5/3)

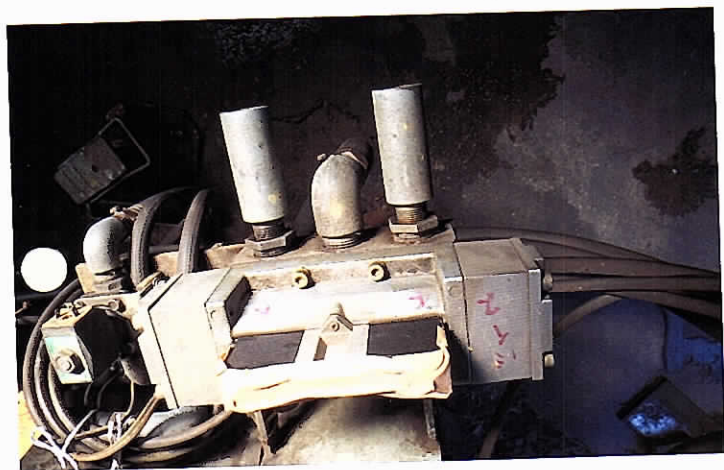
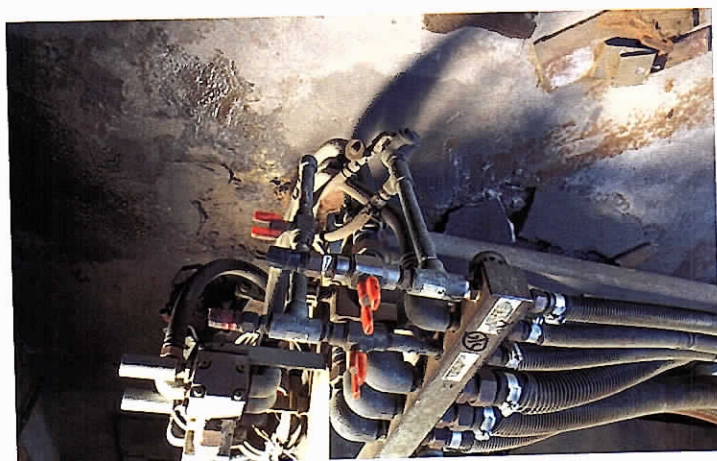
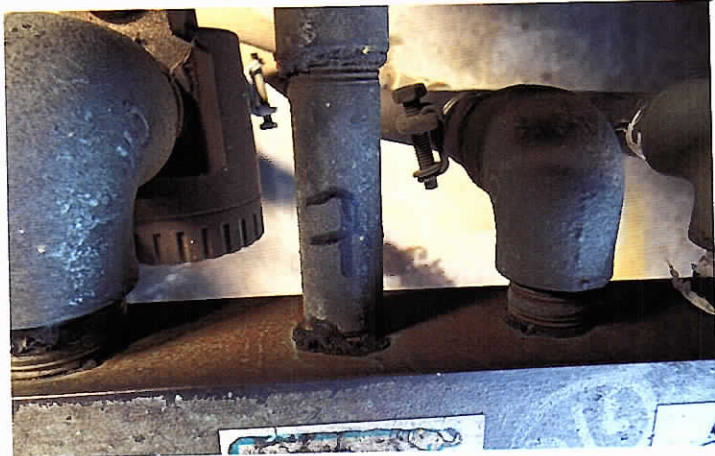
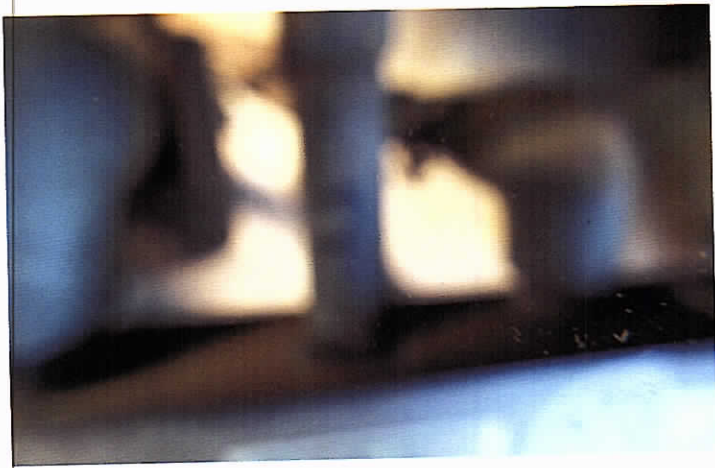


EP-211

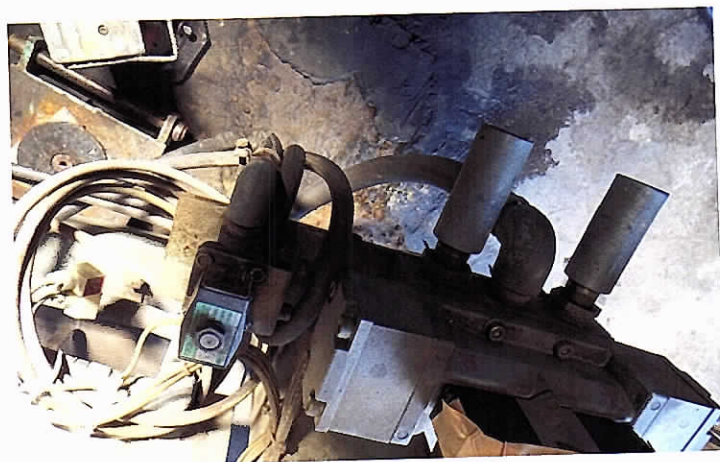


サキダツ丸 (前) 700-9-1211

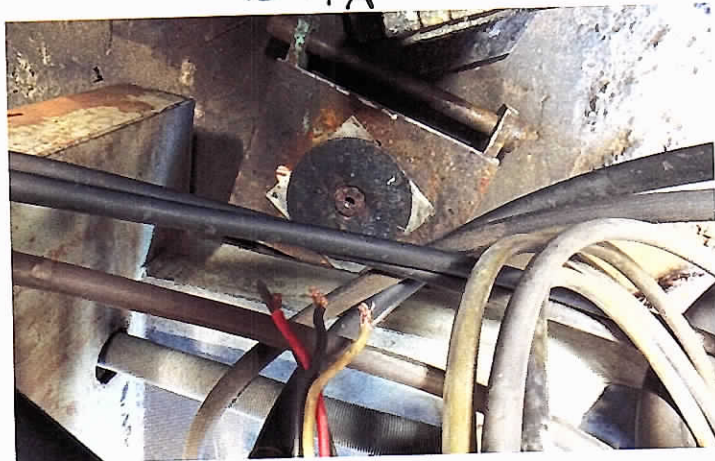
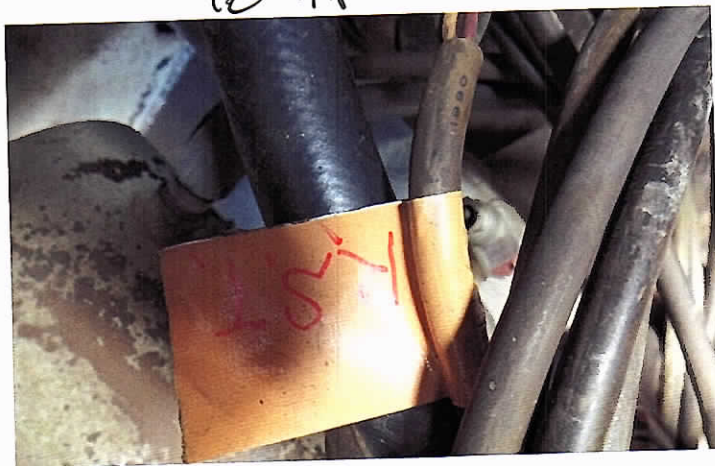




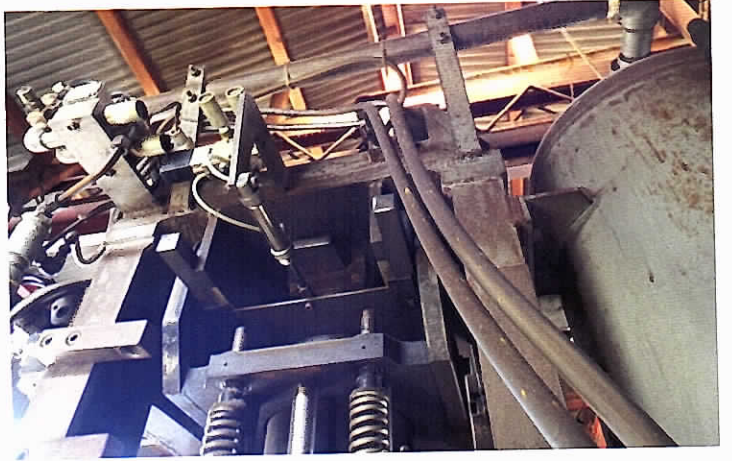
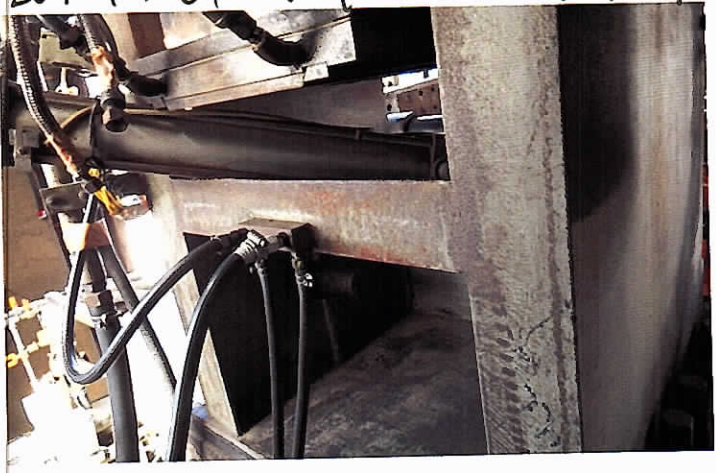
電源



電源

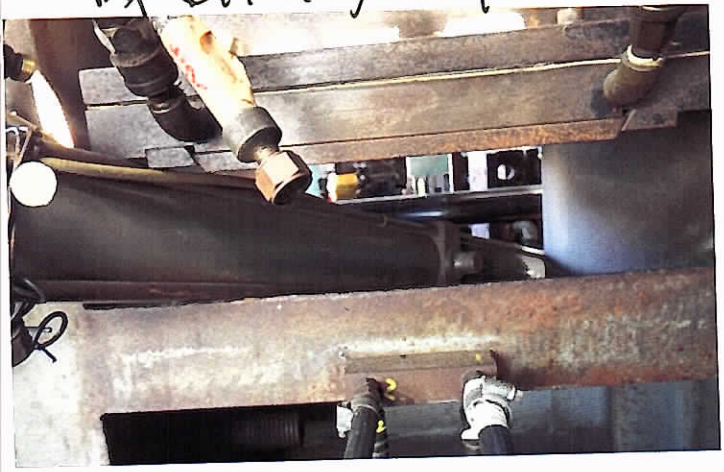


2016.03.01 台車走行部点検

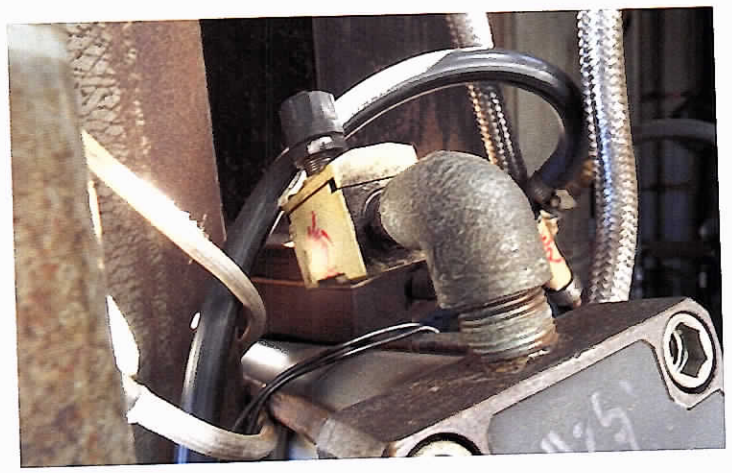


台車走行部点検前

点検後



点検前

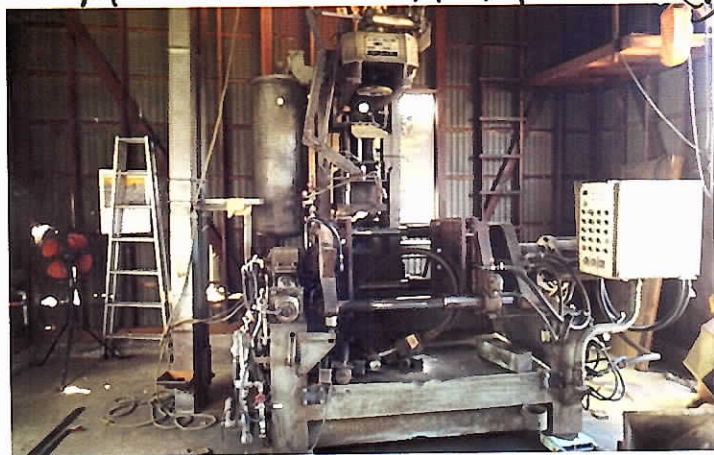


2016 09 01

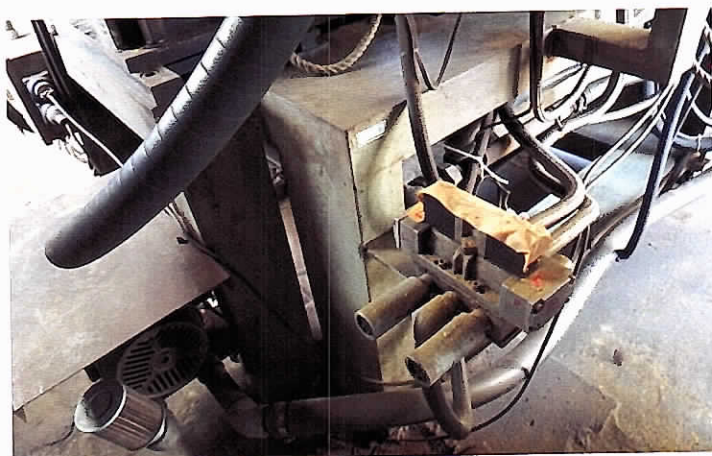
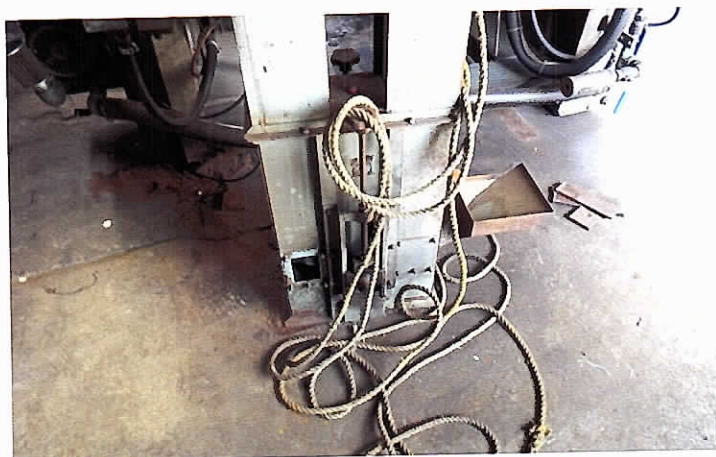
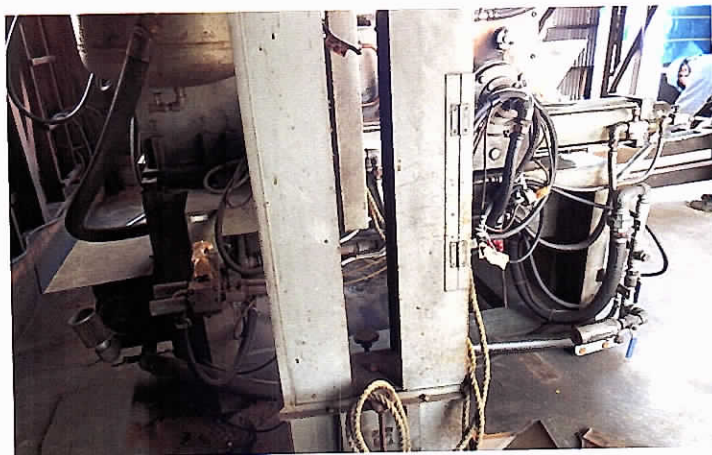
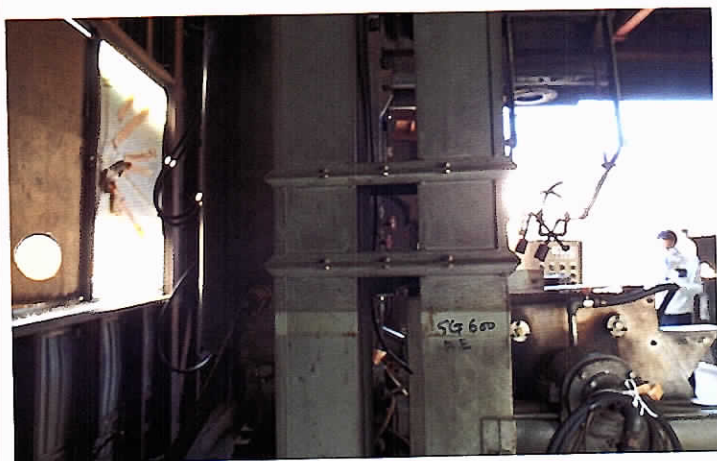
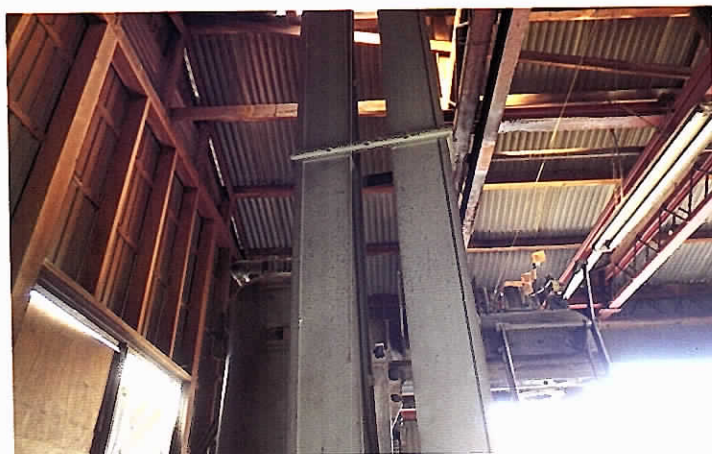
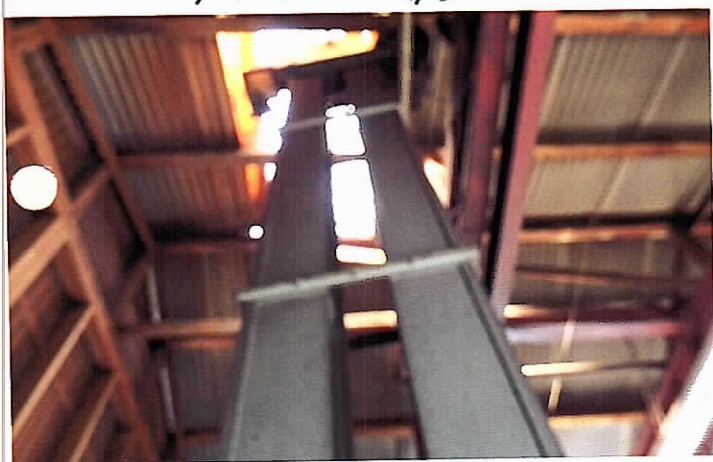
SG600BE

本機

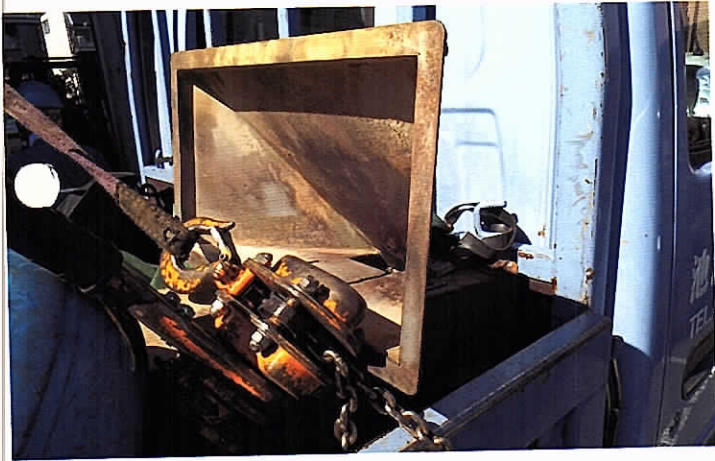
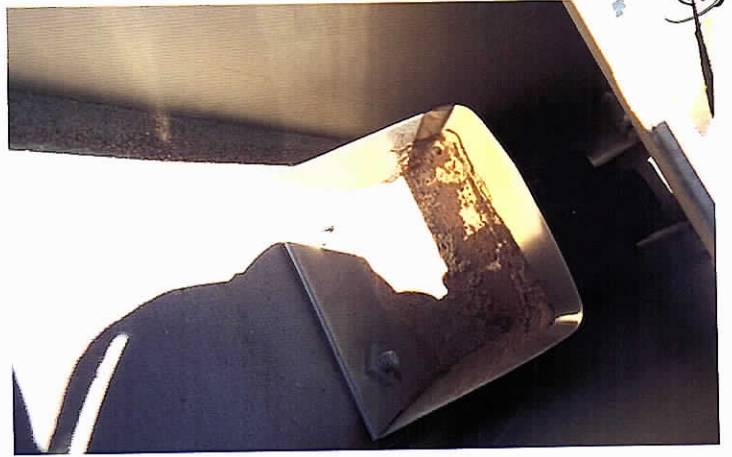
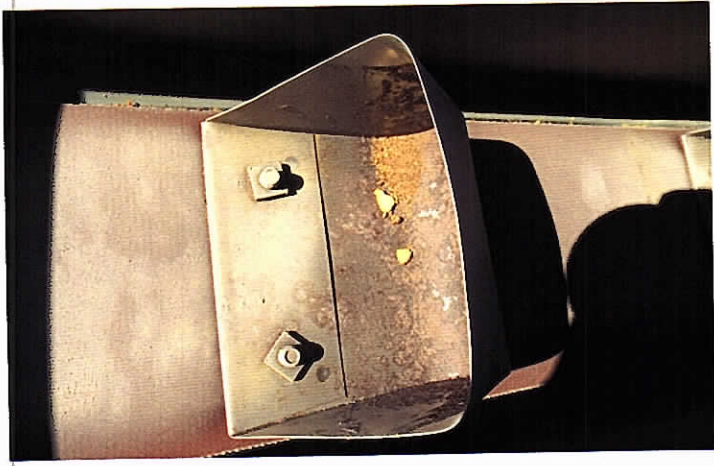
8/3



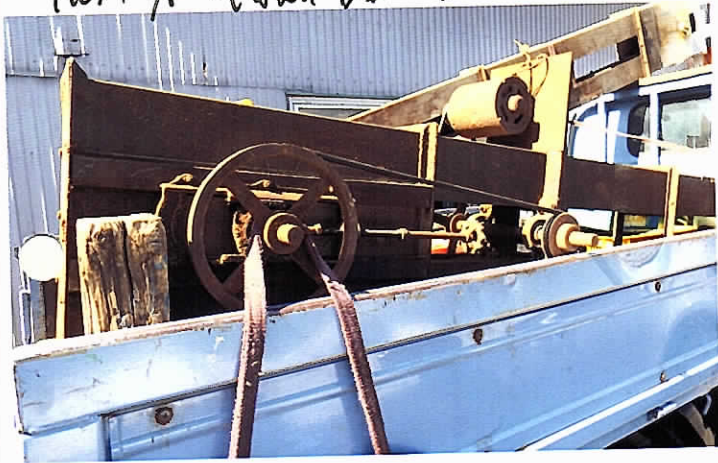
SG 600 BE



9/3

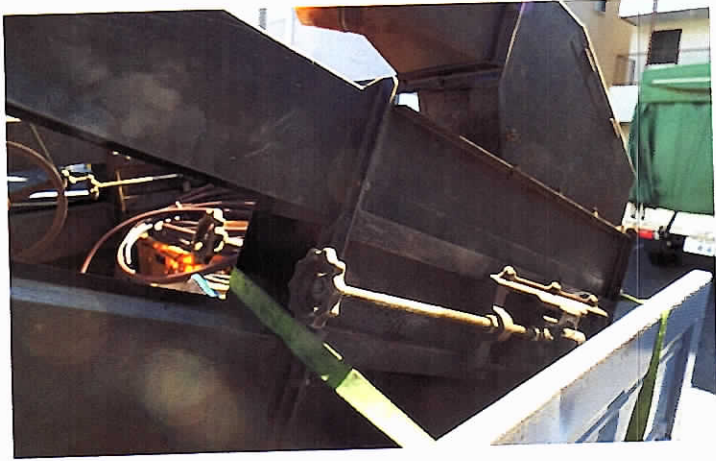


7w7p/r3[82u BE 3000 2016 03 01



20160301 PC7PTP31ER4BE 3500-

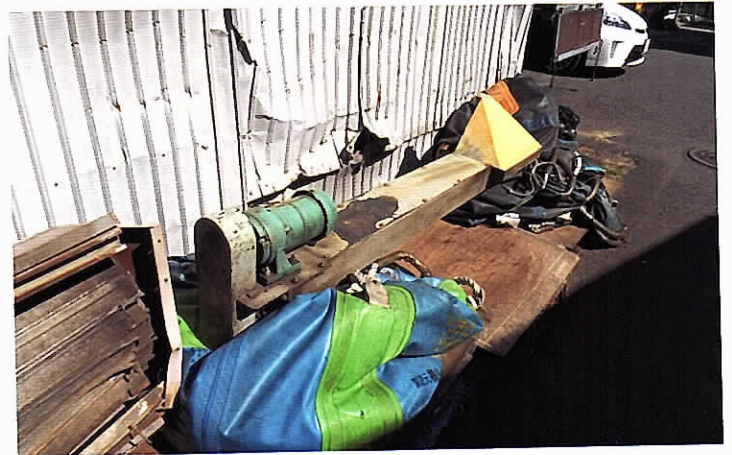
10/12



200万円のBE



SG 600円 29112-221P (1/2)

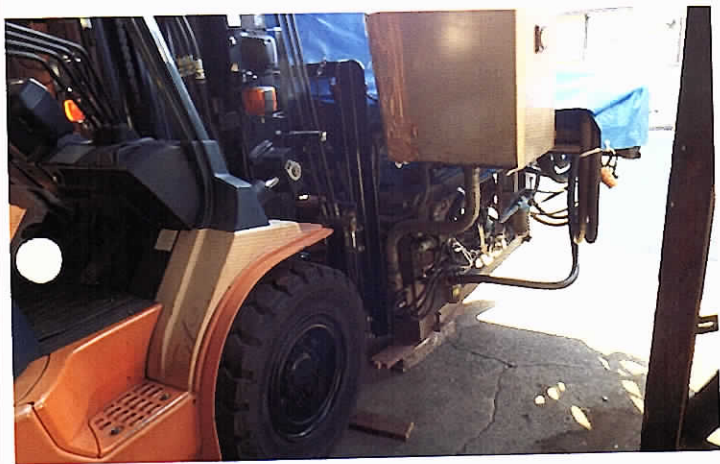
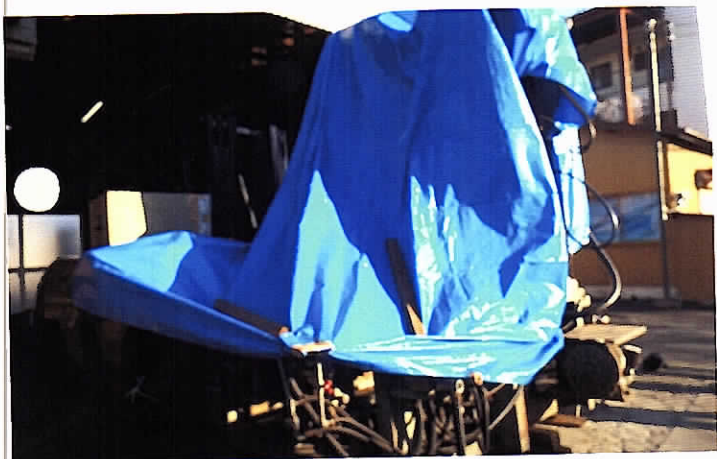


BE用 70kg 200円 29112-221P



20160301 SG 600. 16:00 終了 雨払い

(1/3)



5*7*947 H72200

