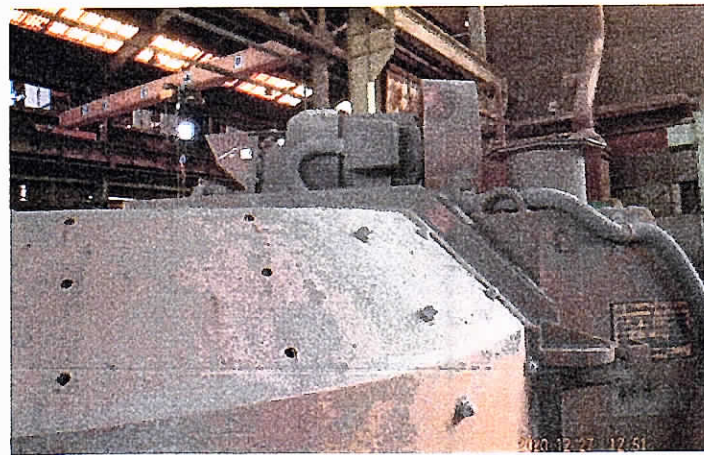
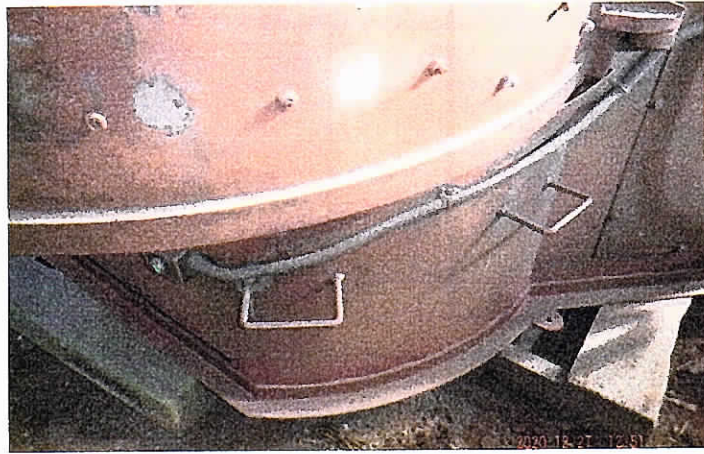
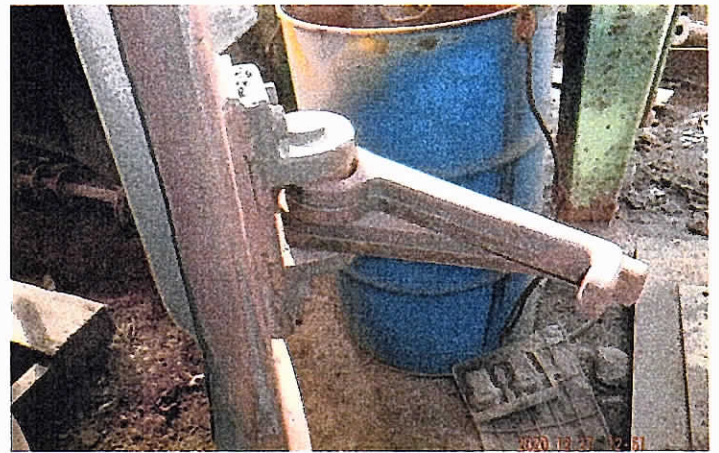
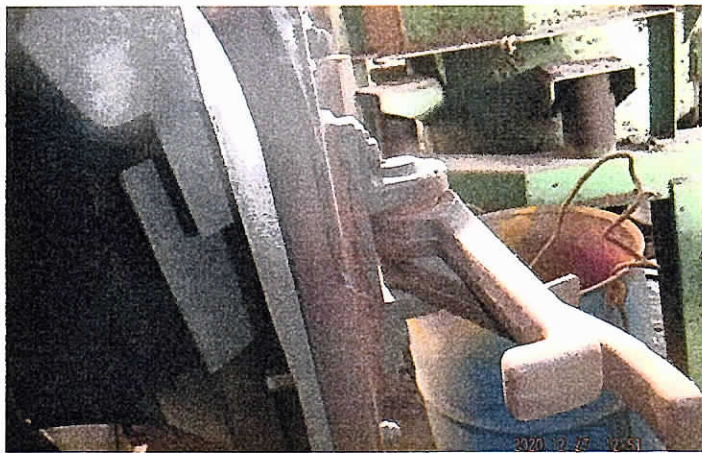


銘石部 / 六角口-5-

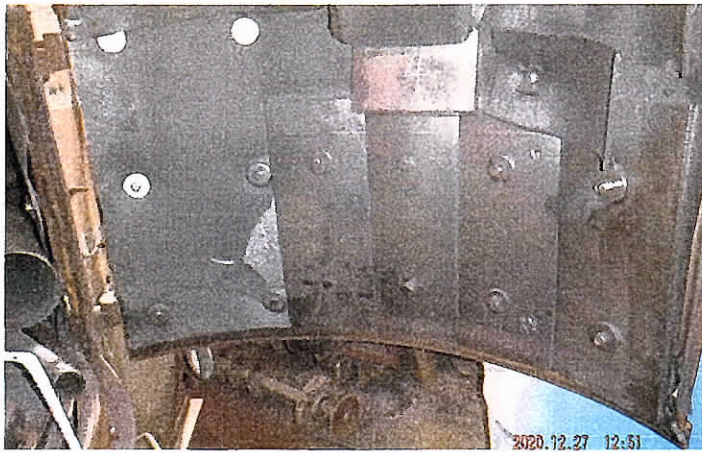




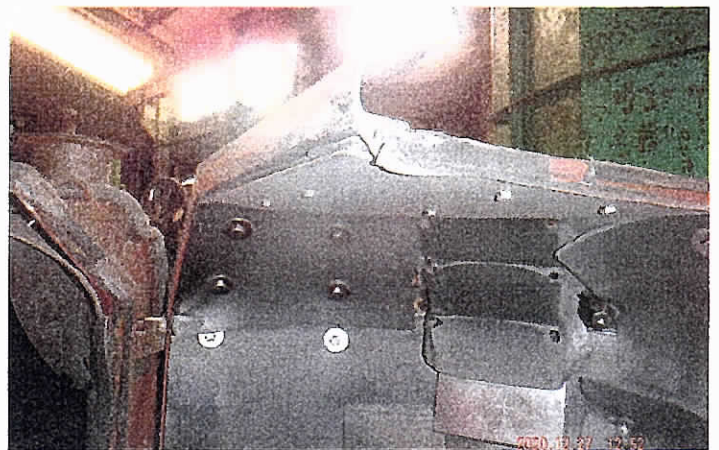
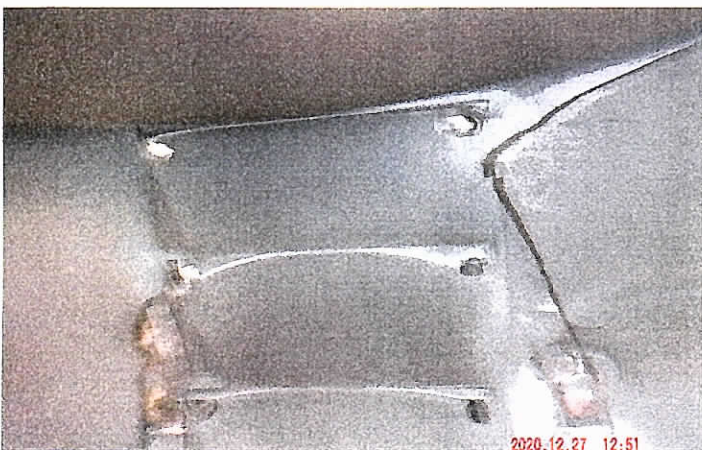
トセウ 全部

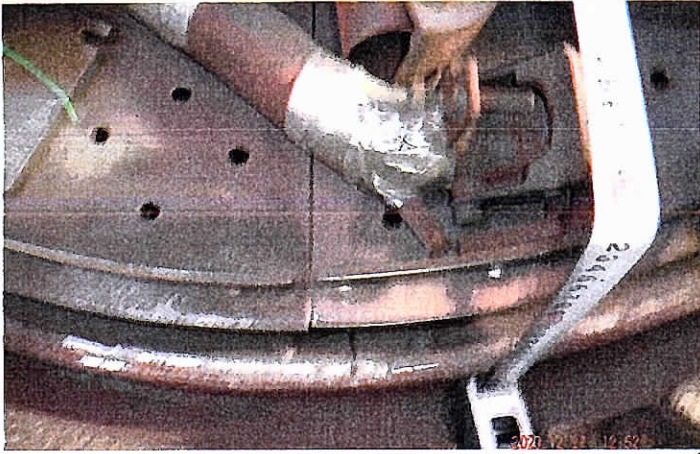


セウ 全部

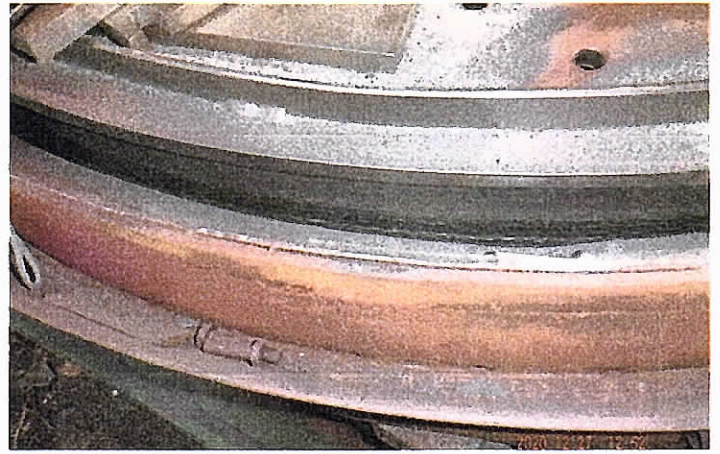
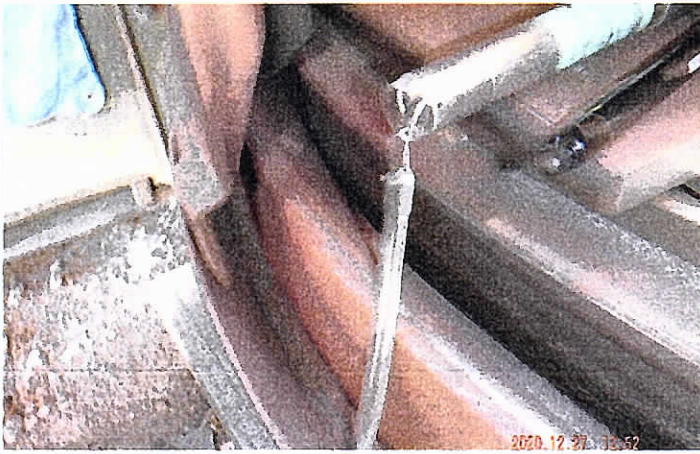


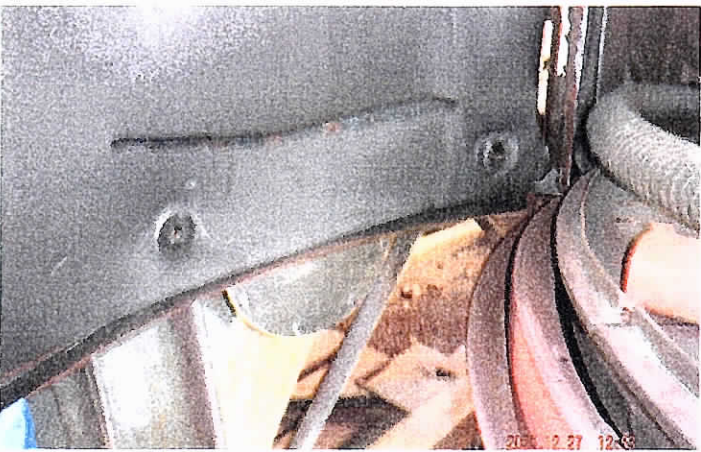
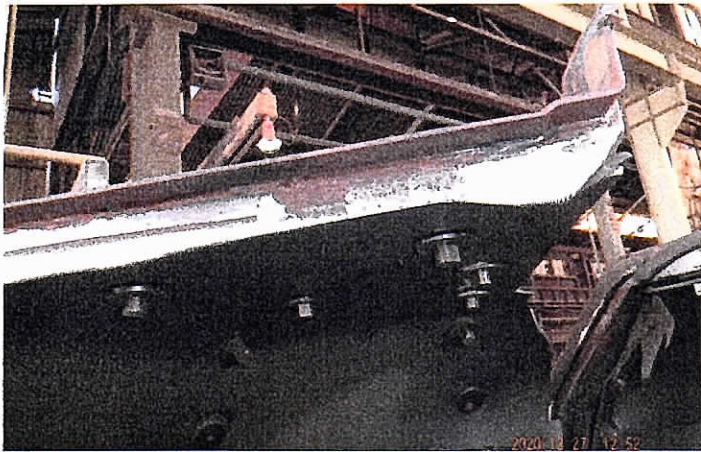
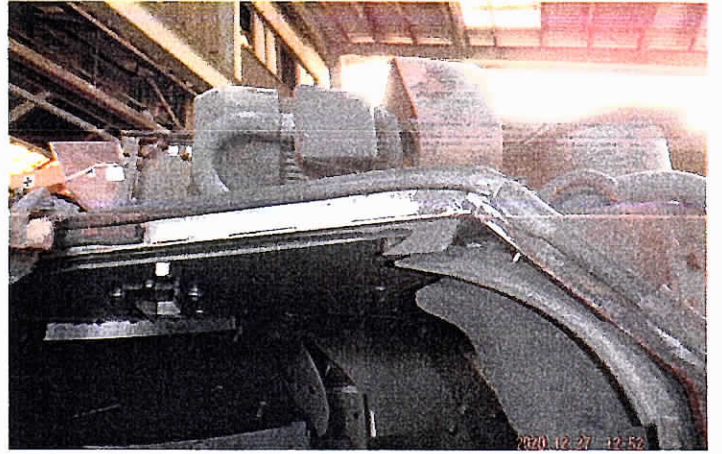
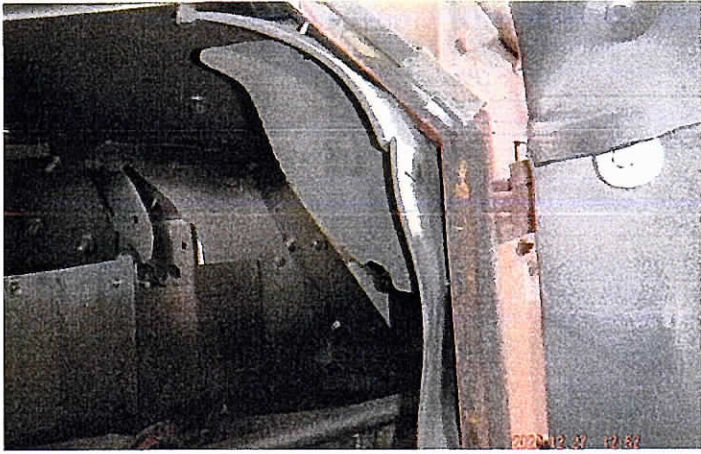
石トセウ

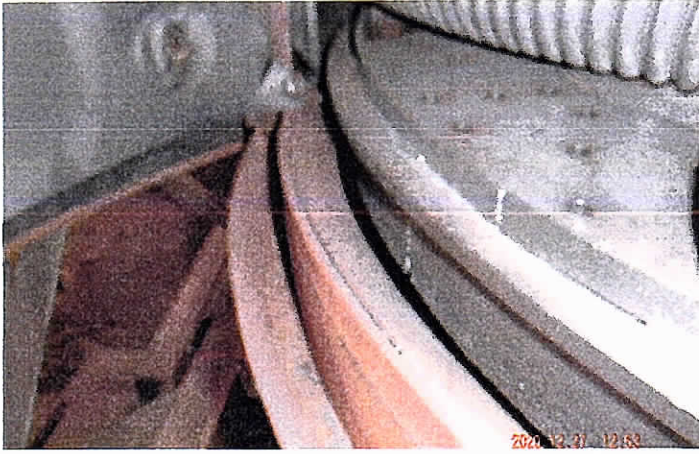




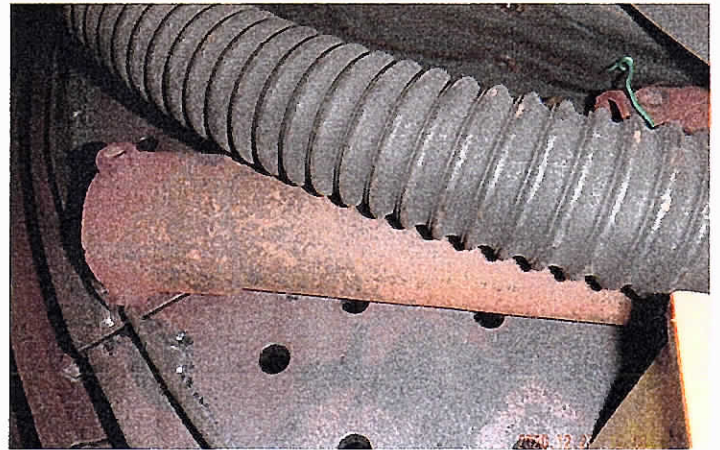
7-700 7 7/8 1500φ





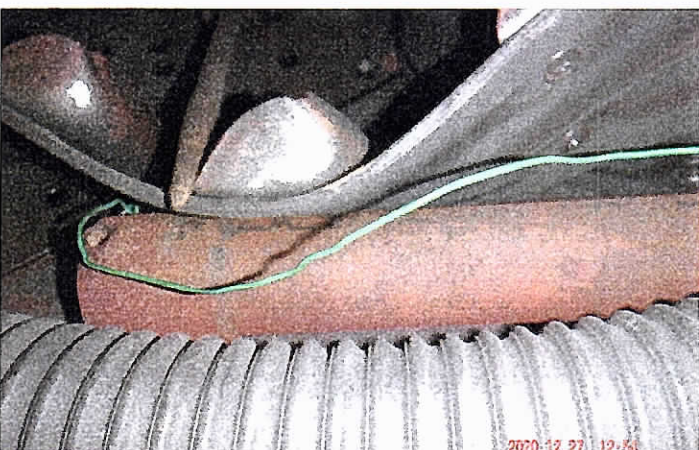


フーブル トセリ部

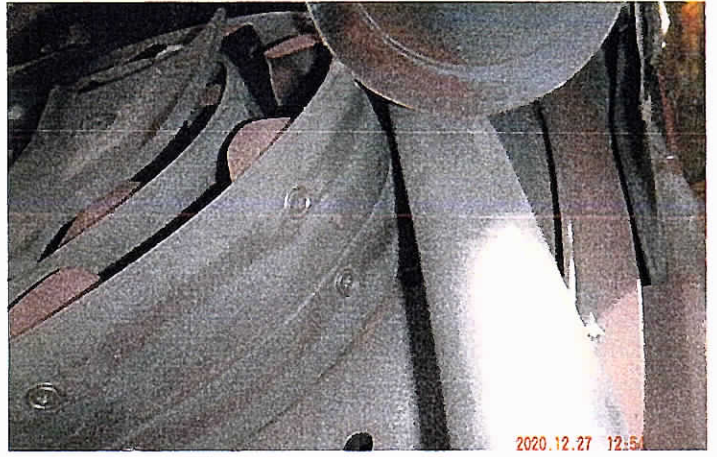
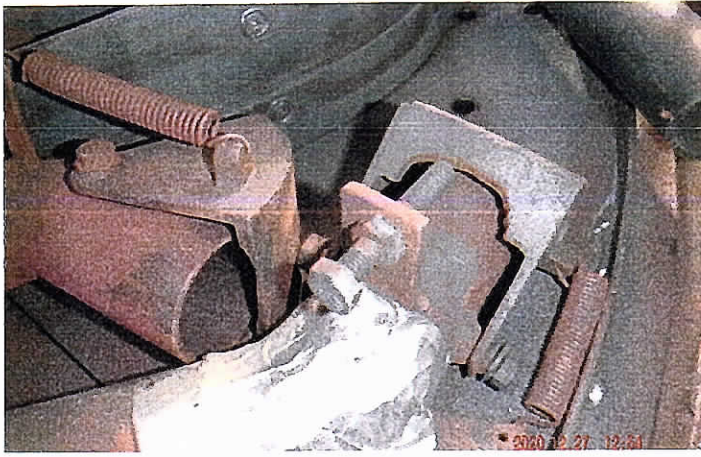


袋下地

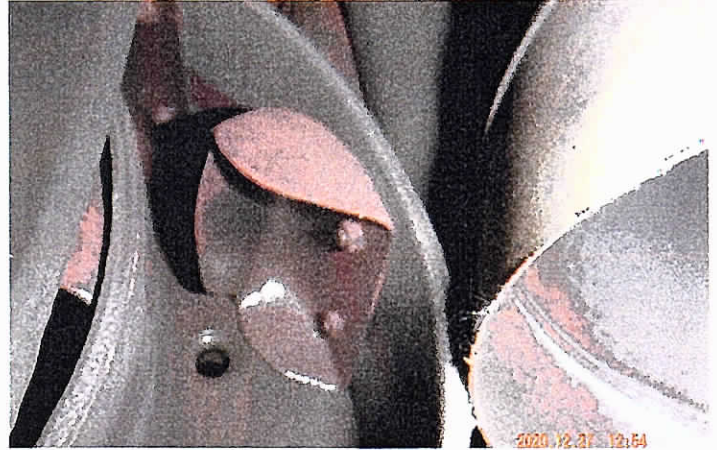
シート



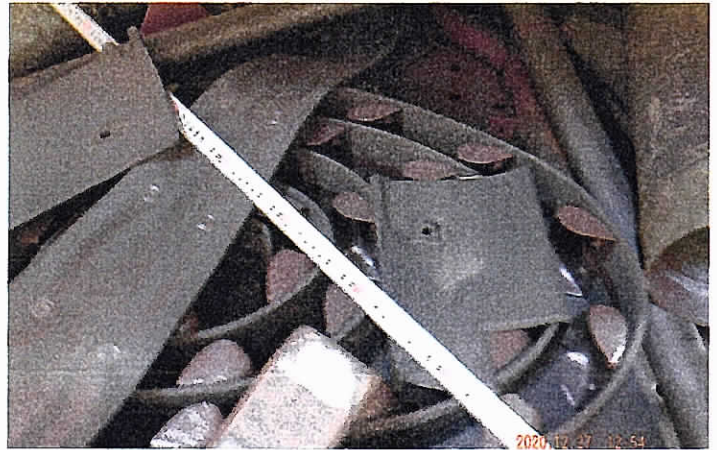
シート

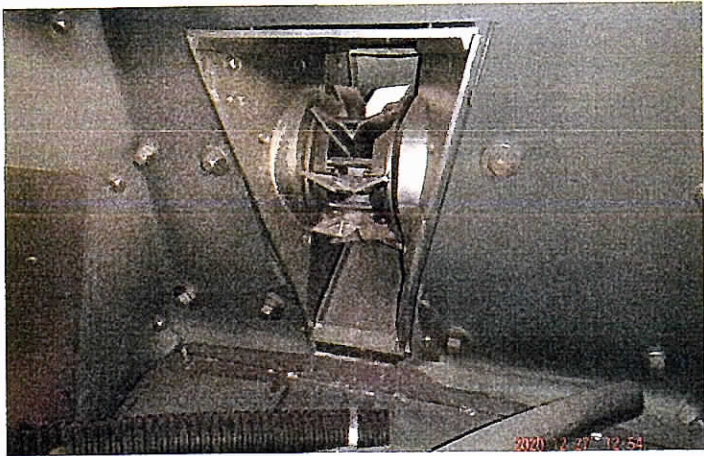


玉用32-1 如. 2本

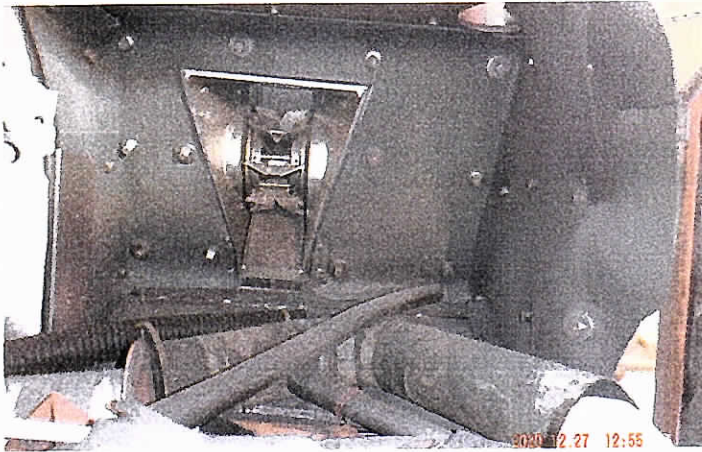
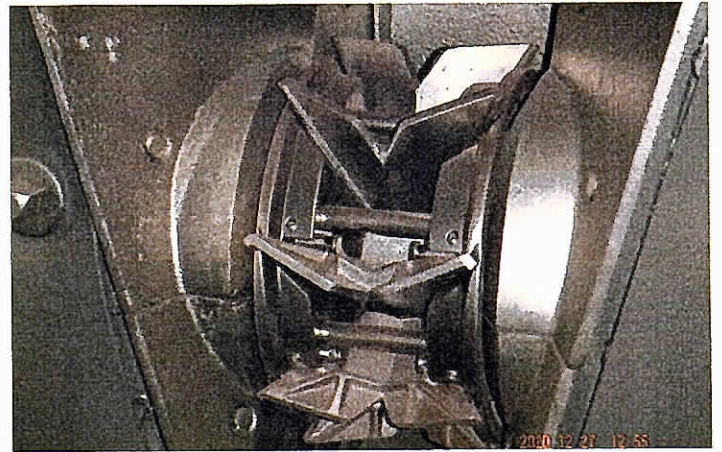
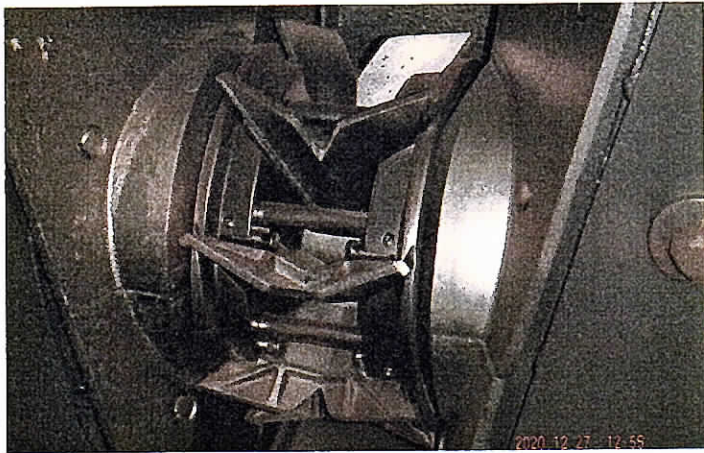


1240T 240T

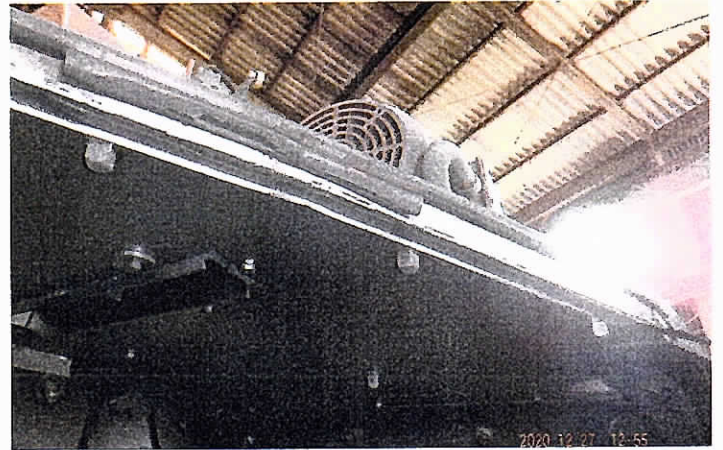




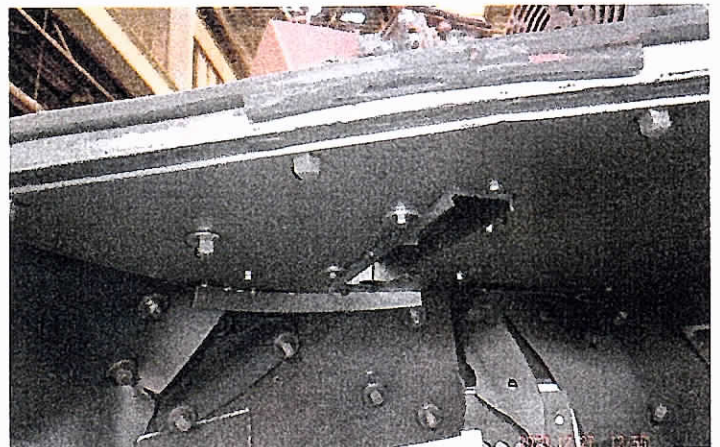
六角口-5-部



六角口-5-

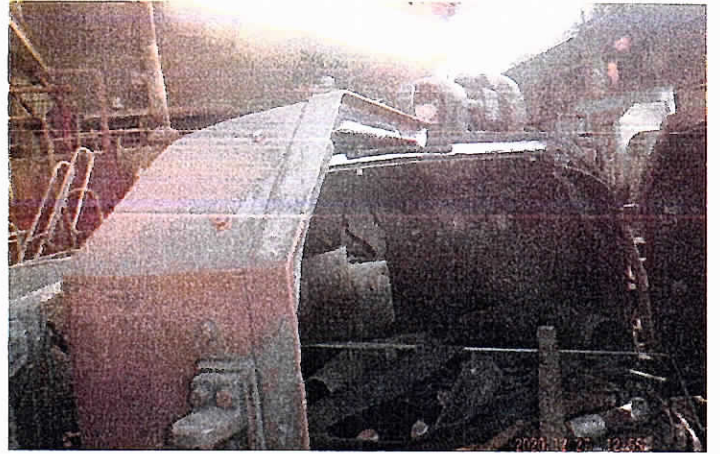
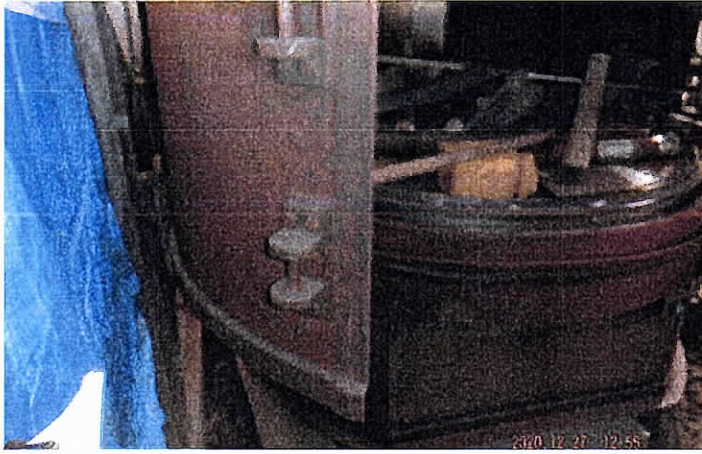


ラバー



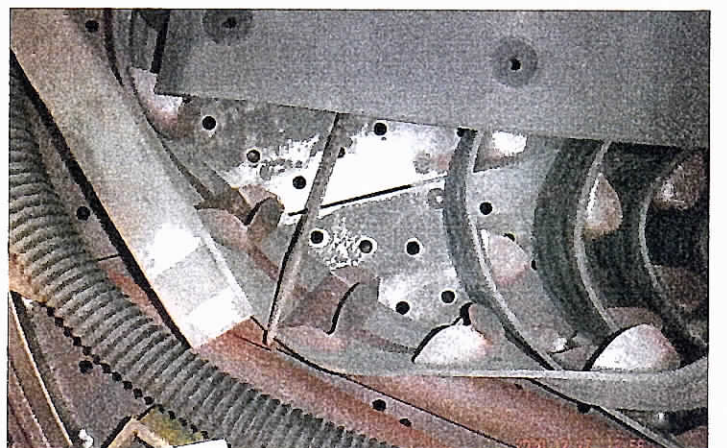
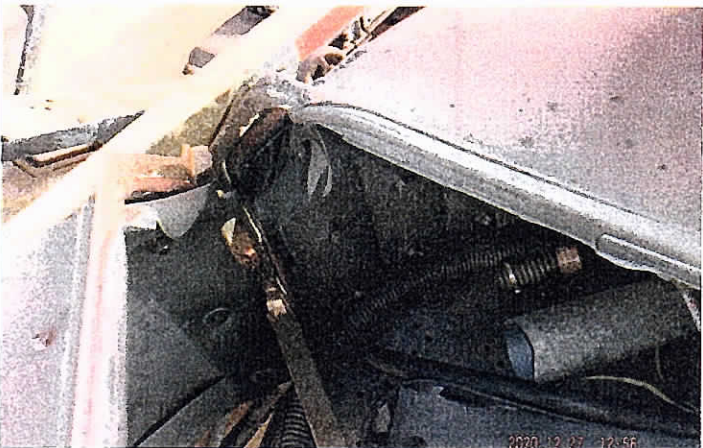
OP 左側上部



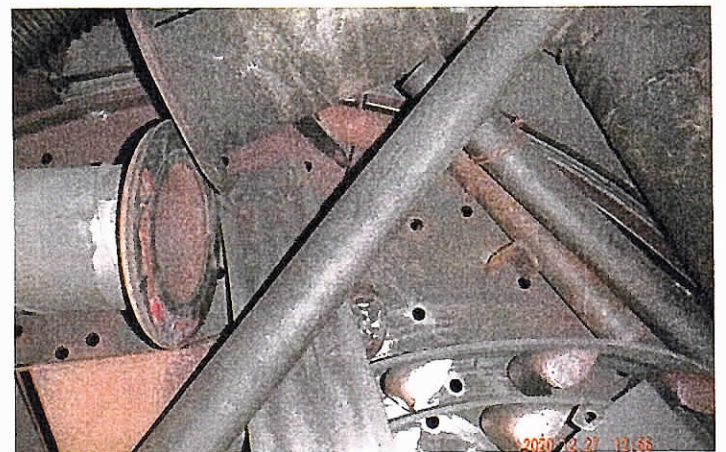
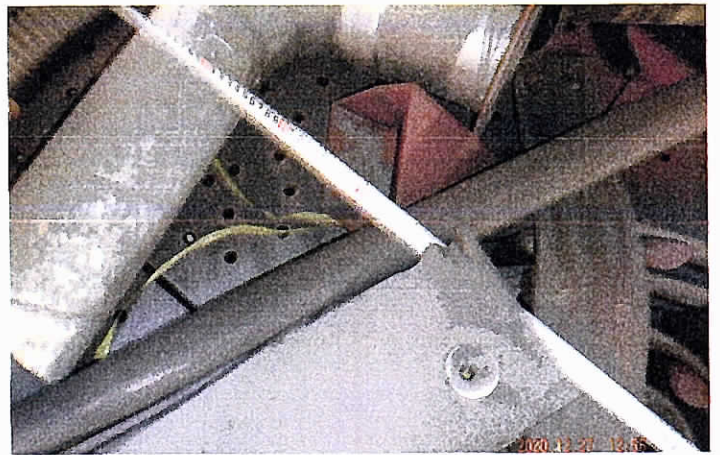
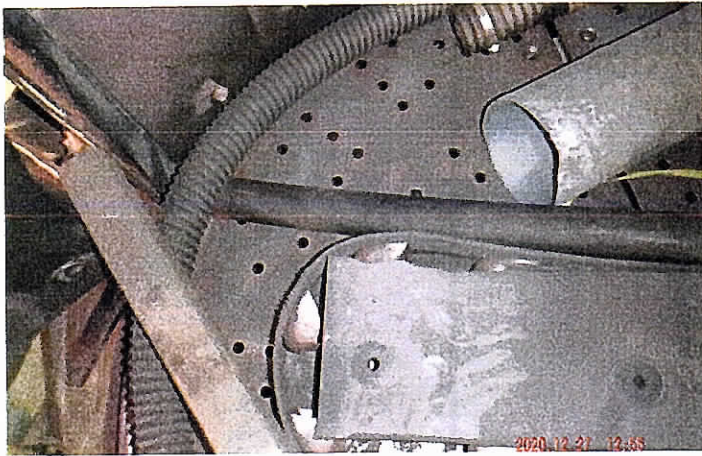


内部

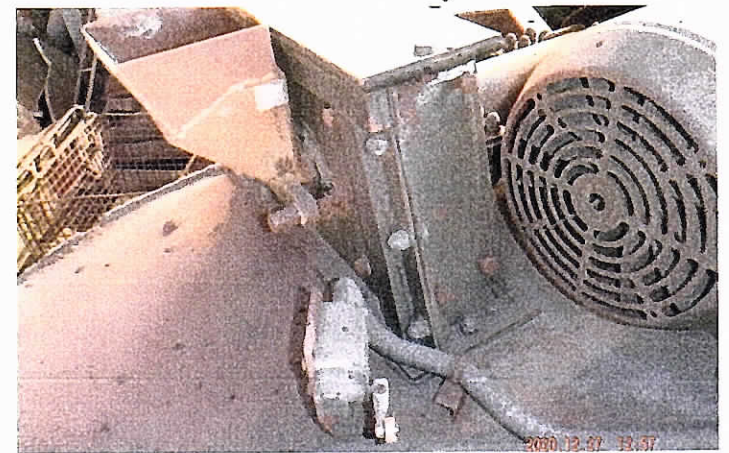
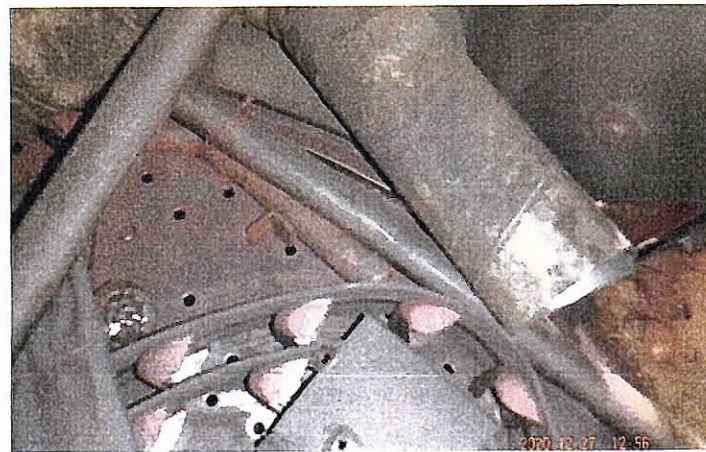
OP 54 T-74L



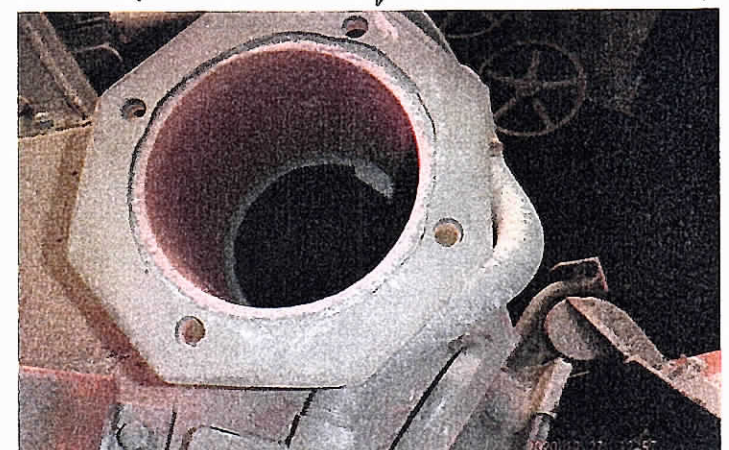
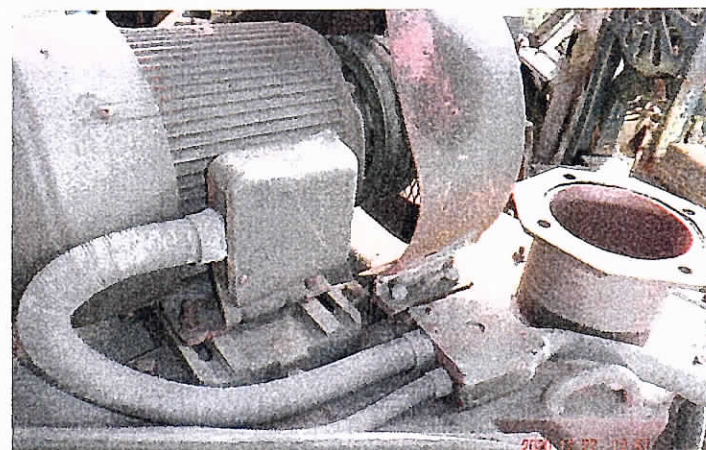
T-74L



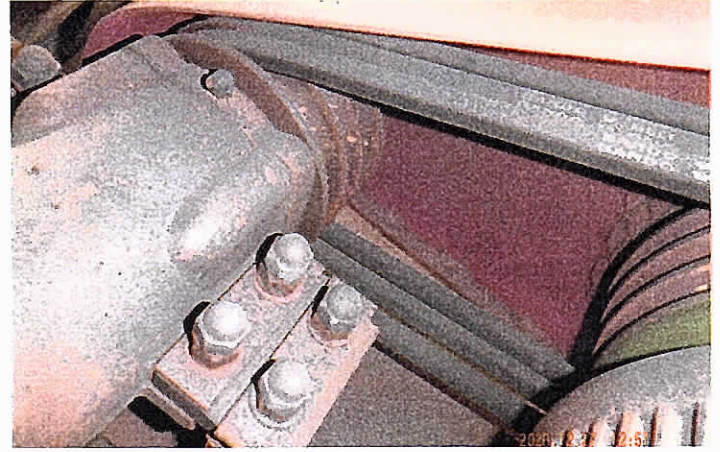
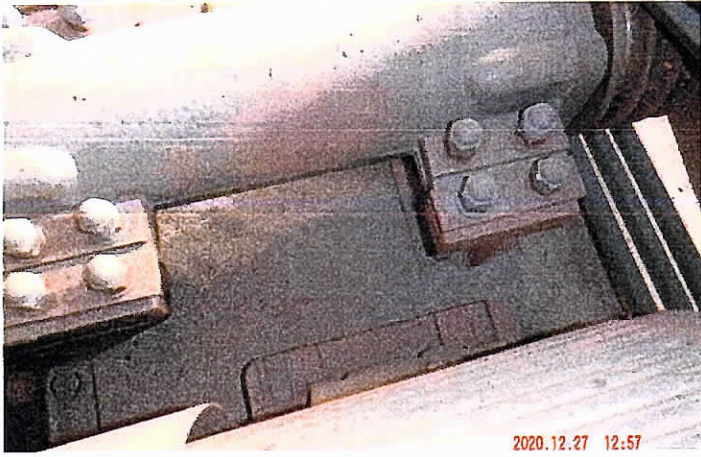
T-711上部分



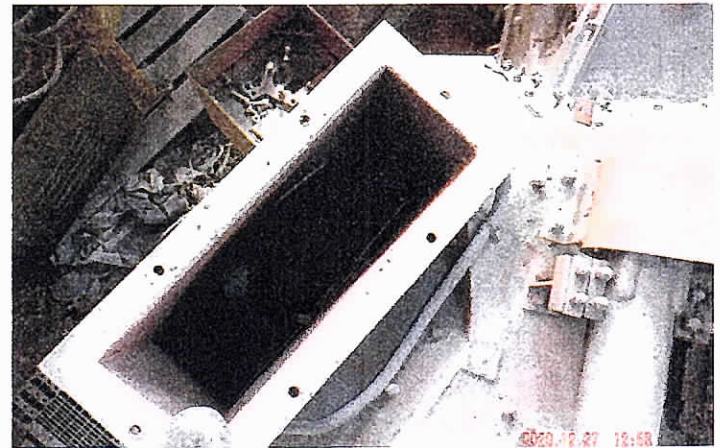
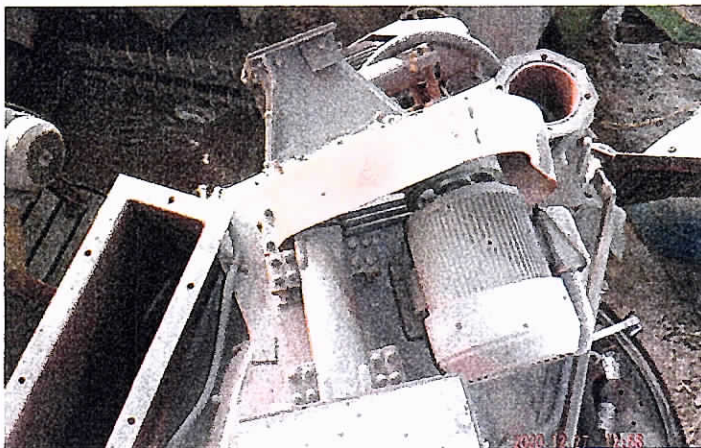
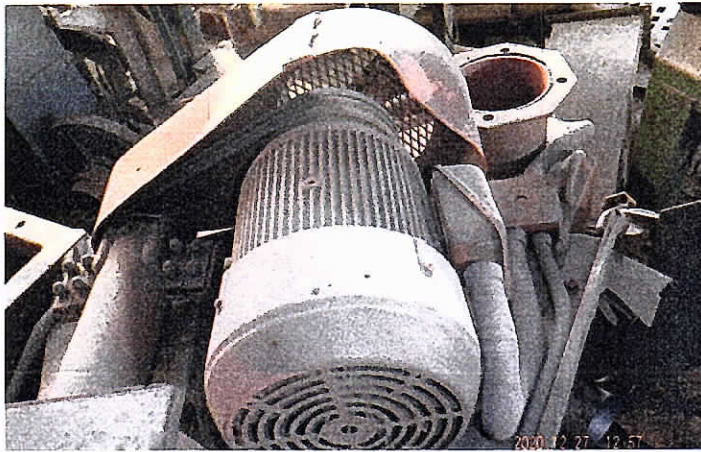
OP 左上の一般部



ボルト等



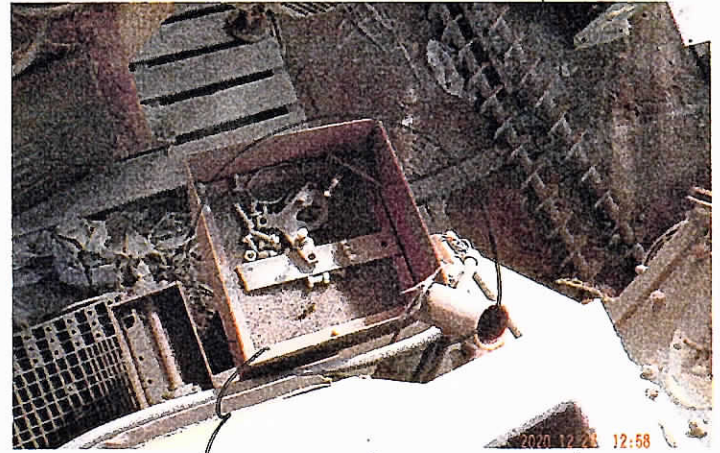
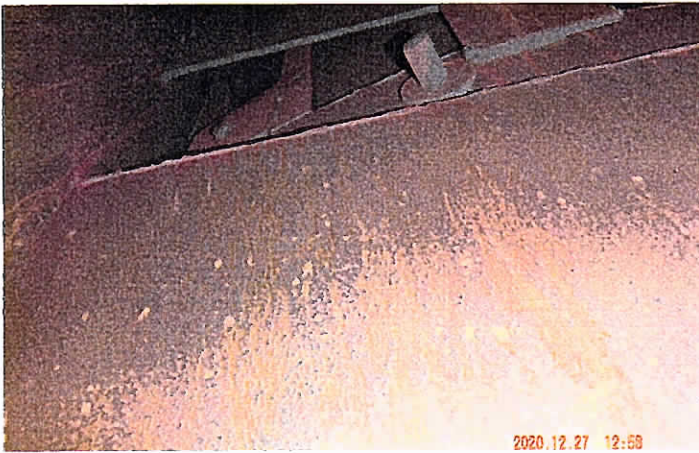
六角口-7-70-4- / vvvv B-113



BE 272 30



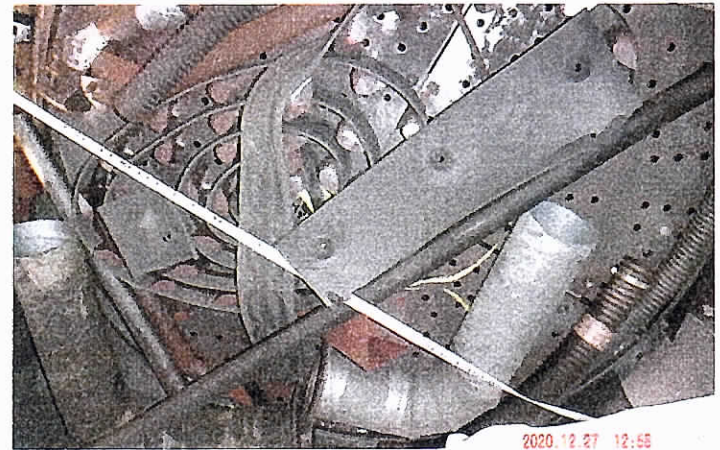
B/E 4-2-4 内部



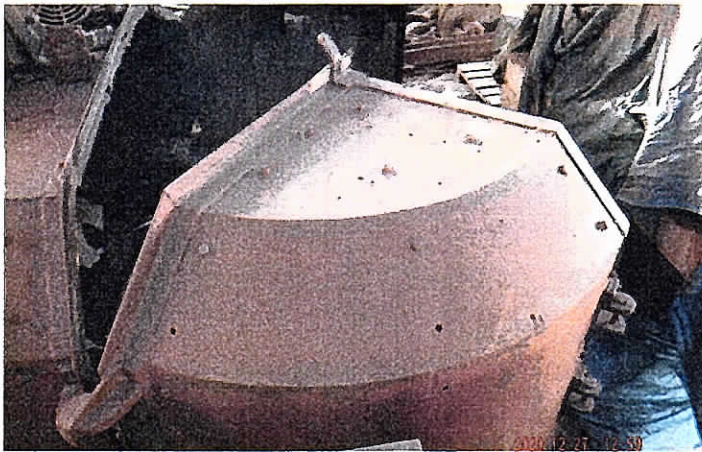
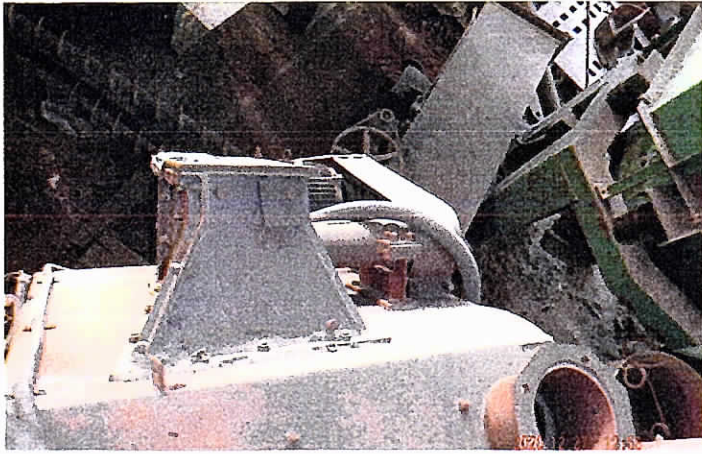
導入管 取付部品



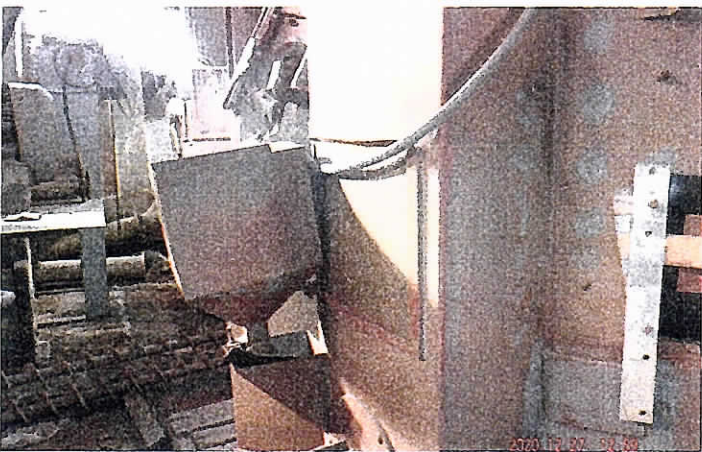
右角口-4



右角口-4 内部

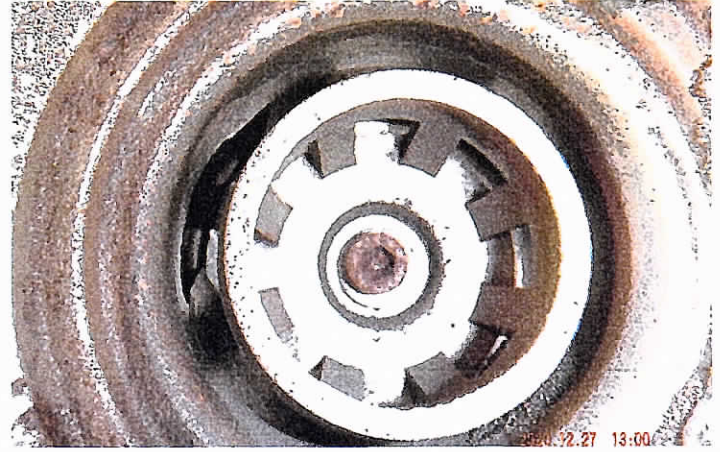
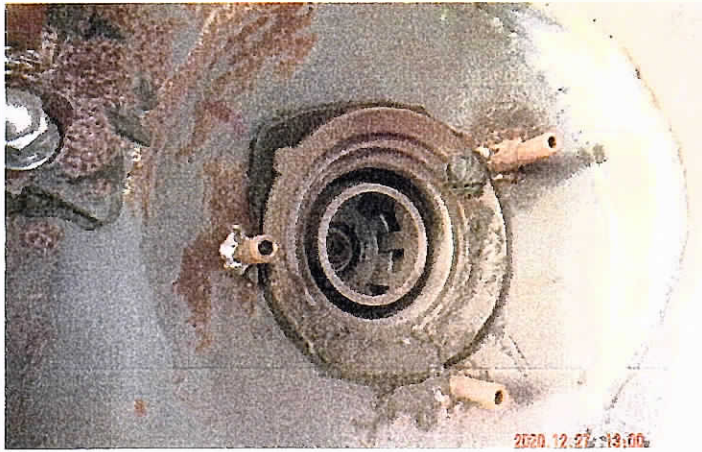
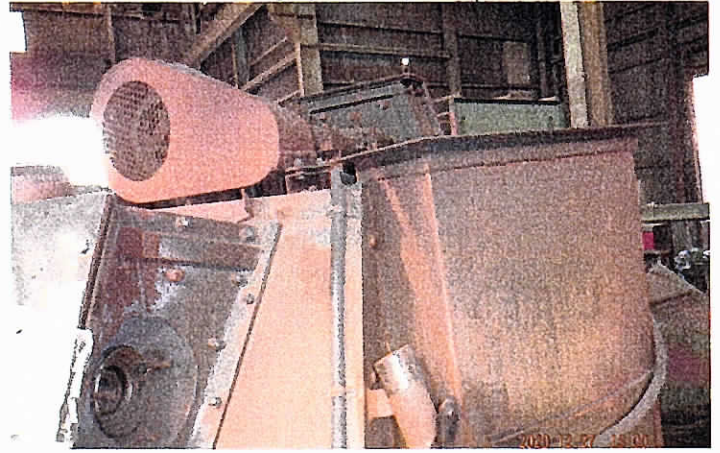
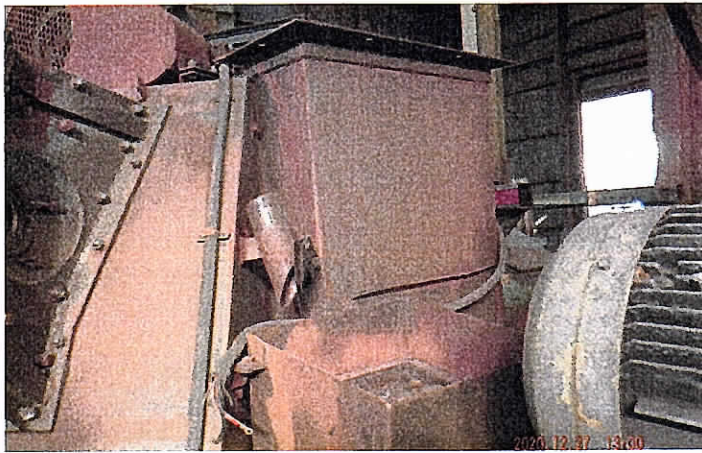


02 左半 1 部

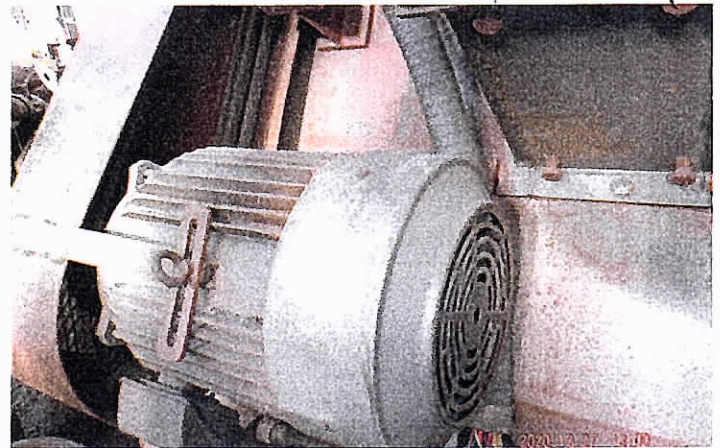
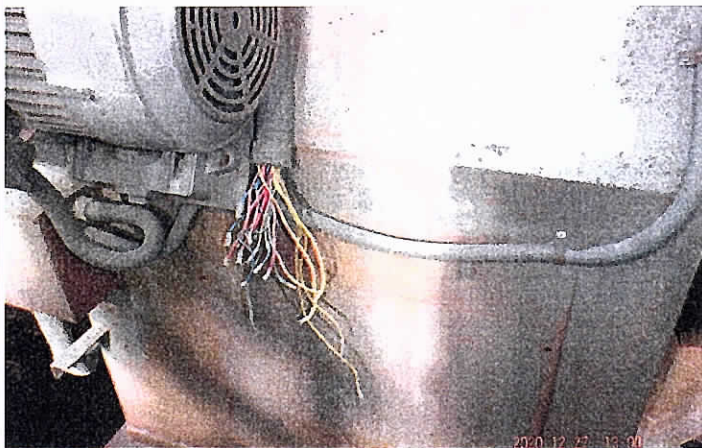


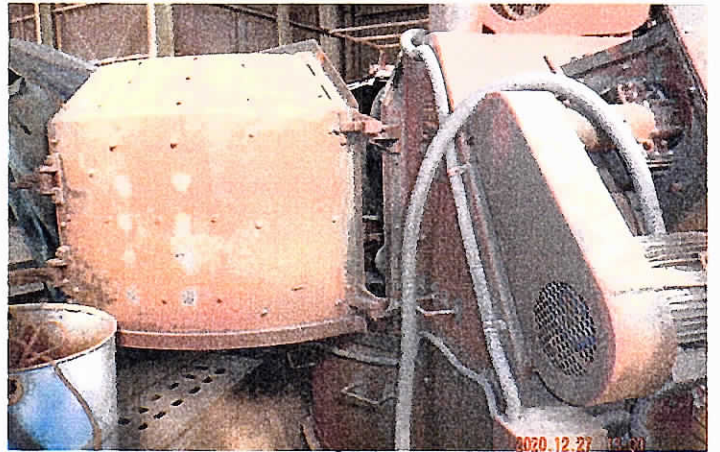
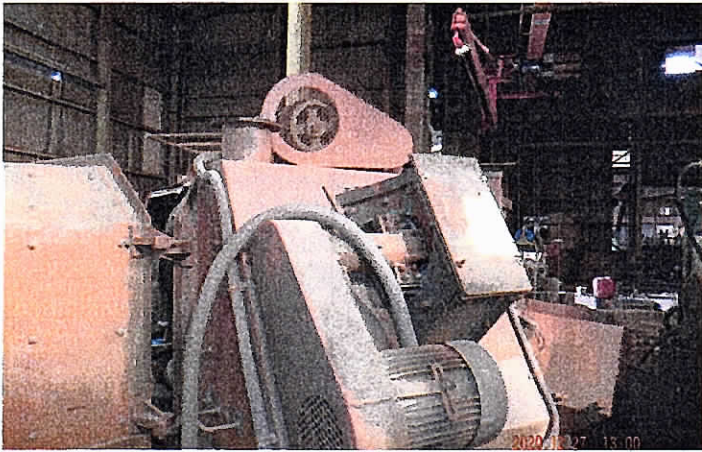
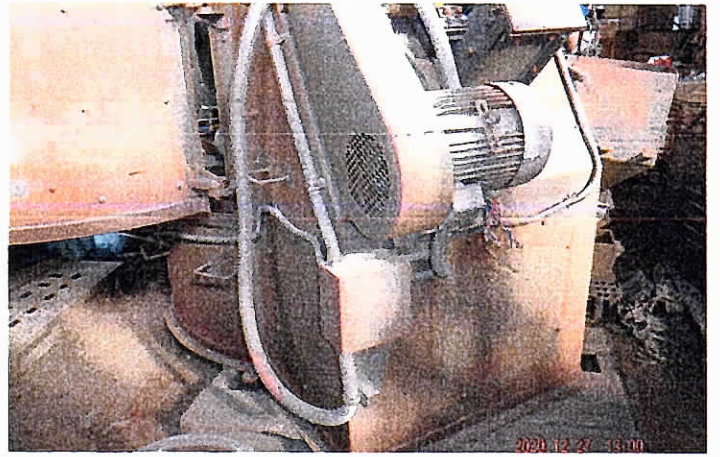
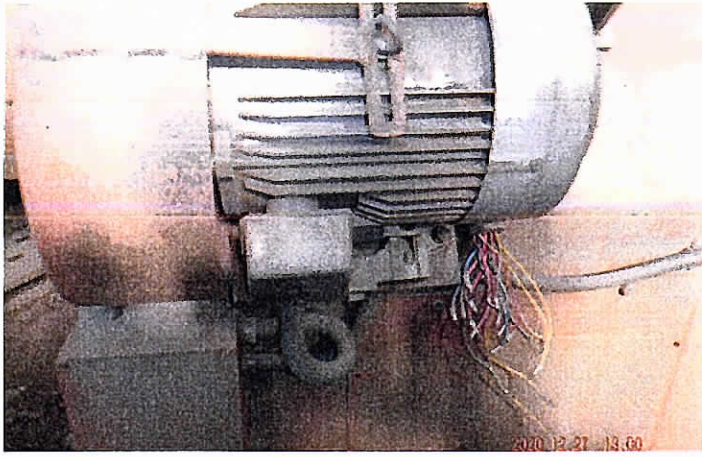


BE 下部



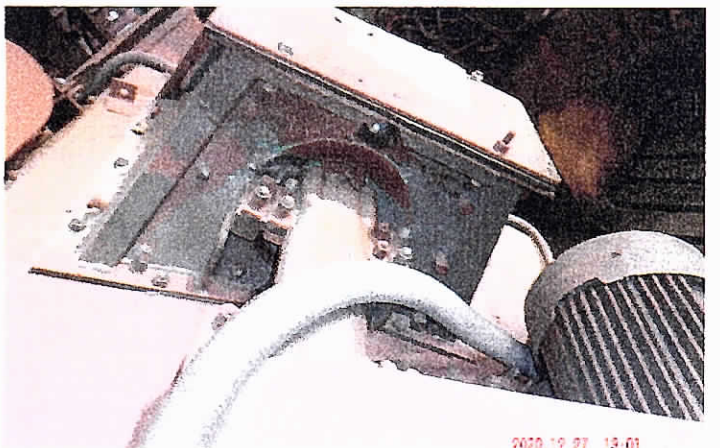
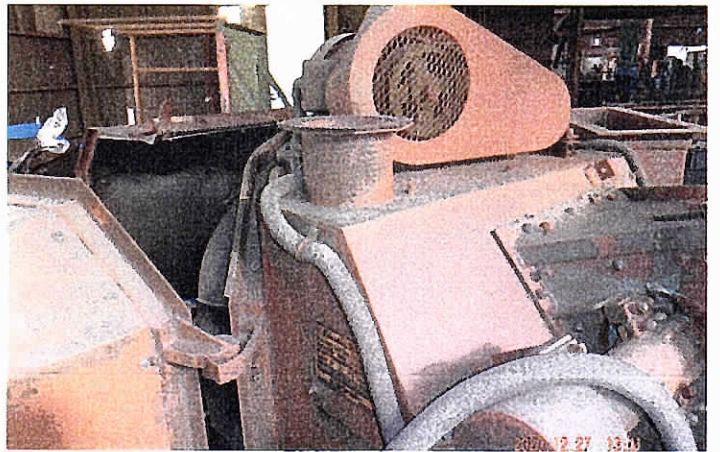
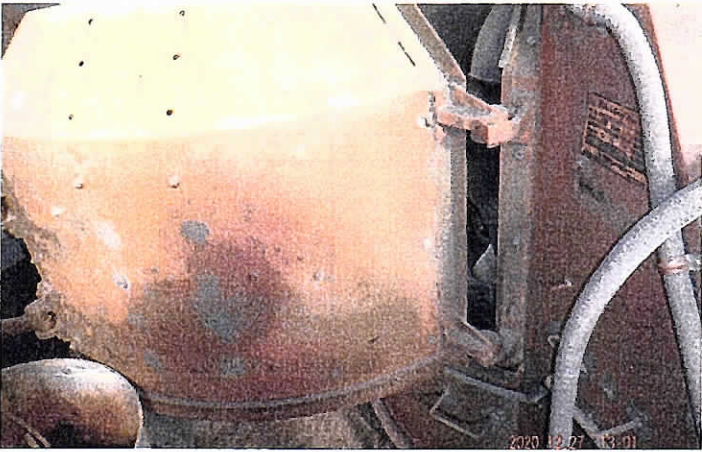
六角口-7- 回転機-7-部



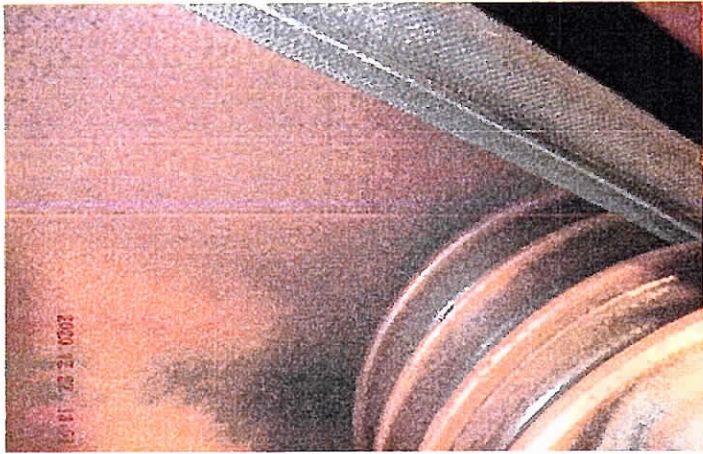


OP石トビ。

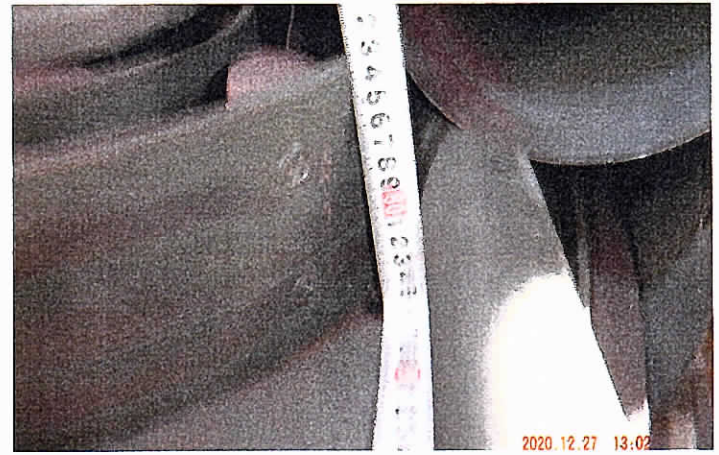
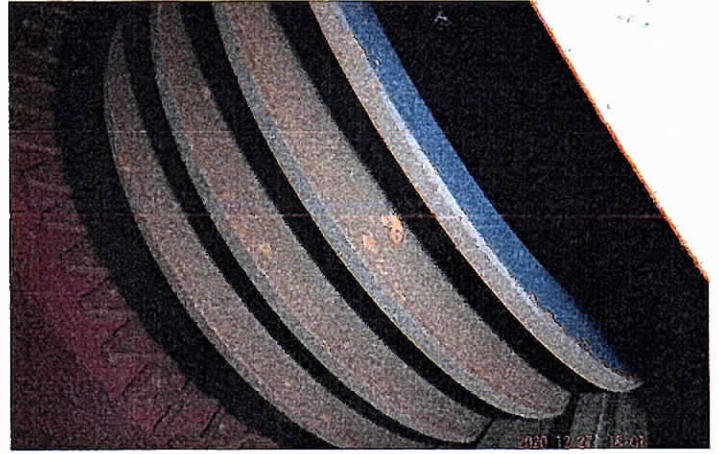
元角口-2



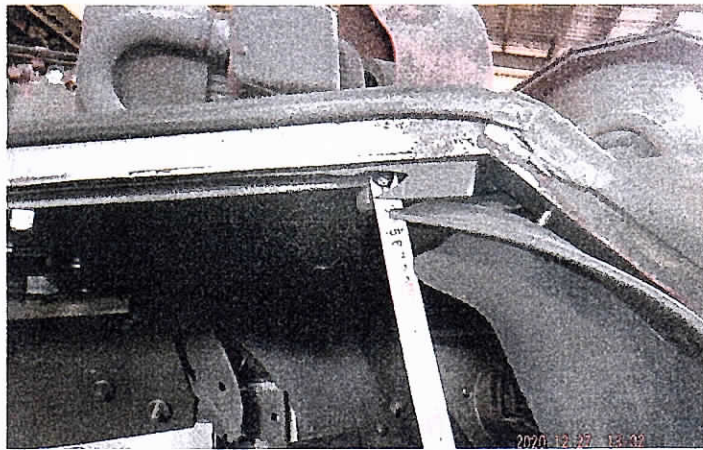
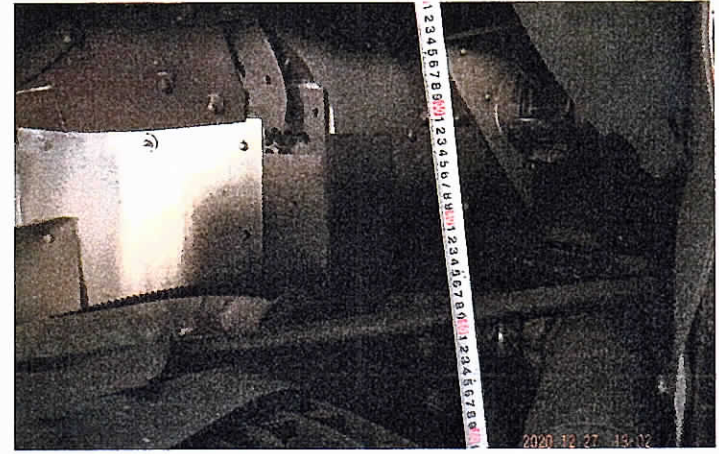
口-2- 元角 本体. 307外部



70-4-部



取射窓高工 850H

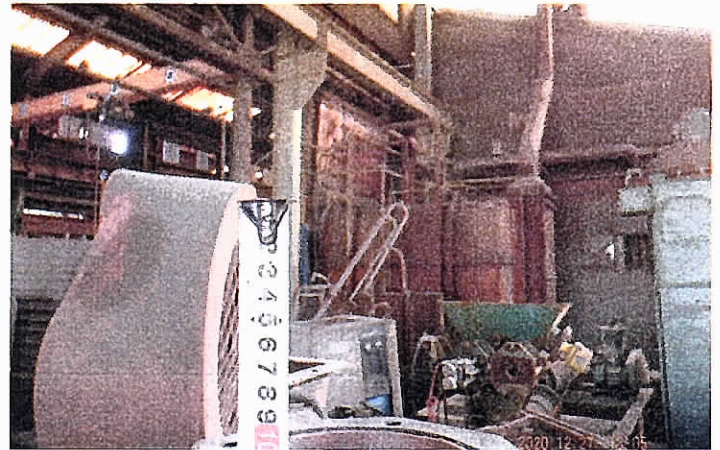
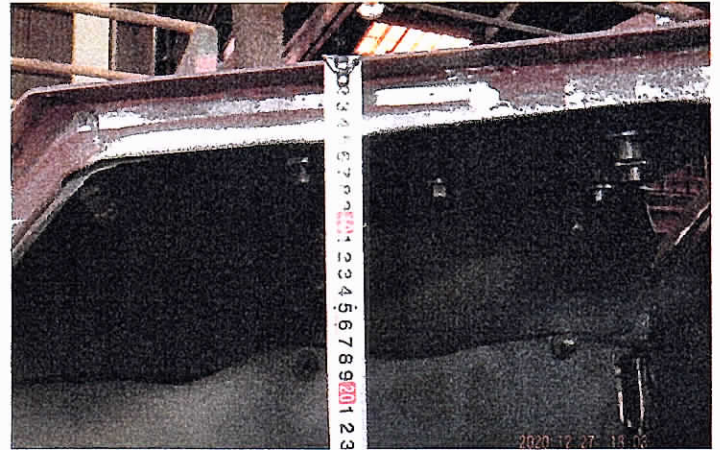
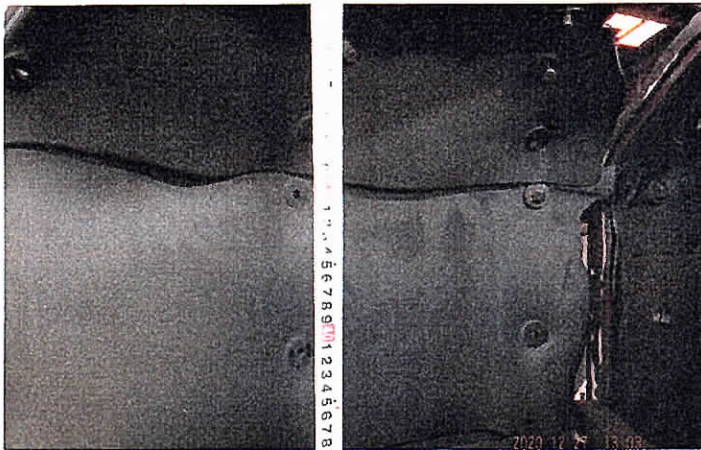
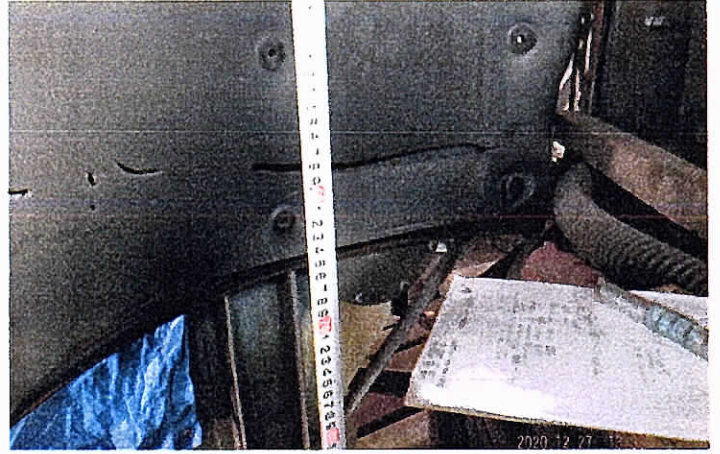


850H

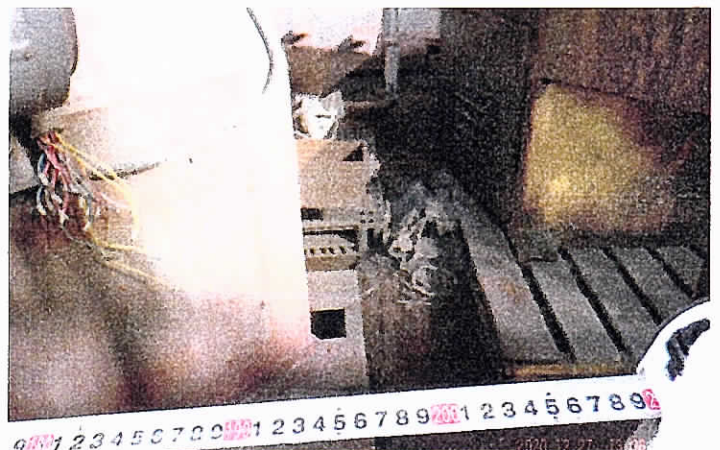
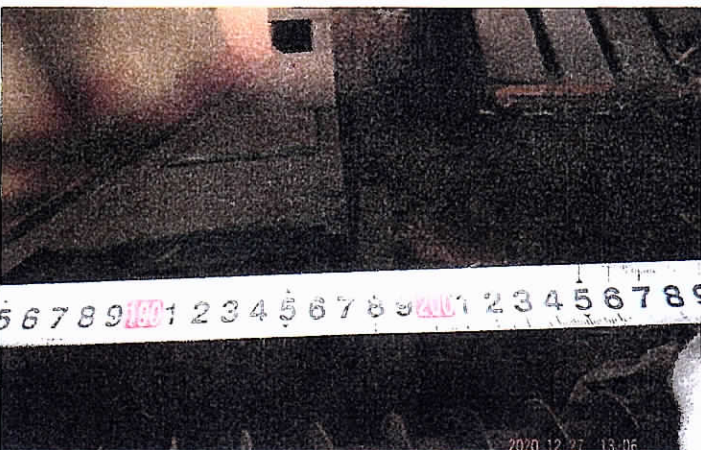


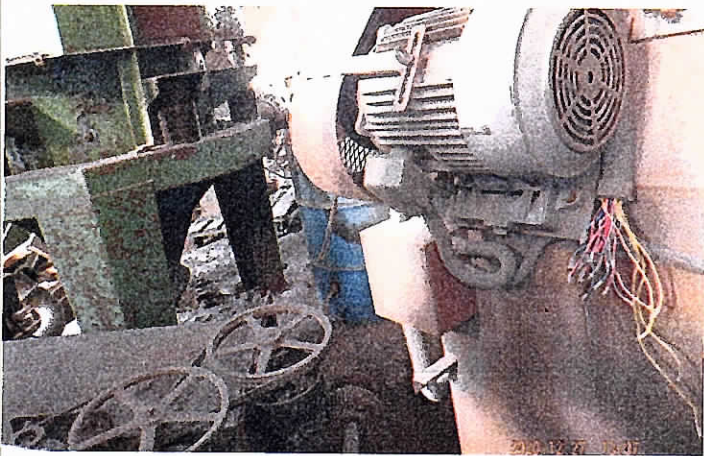
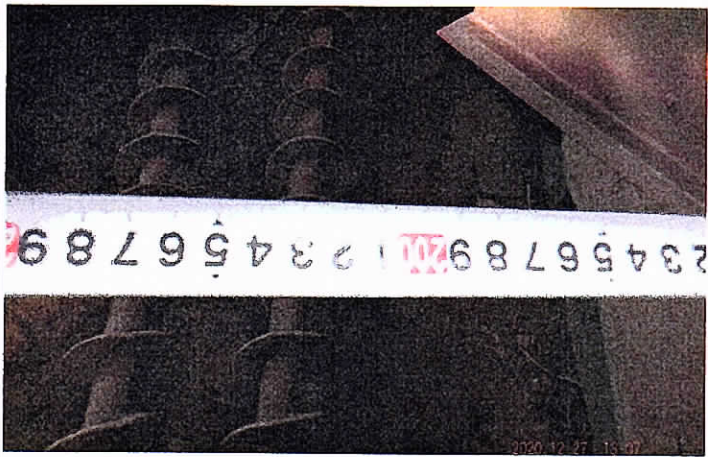
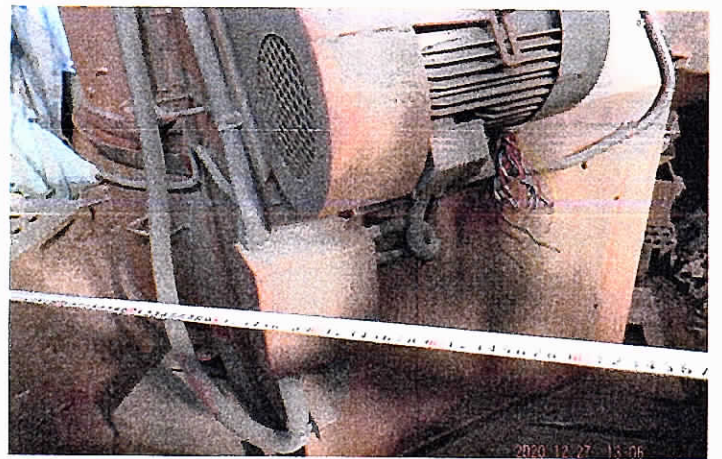
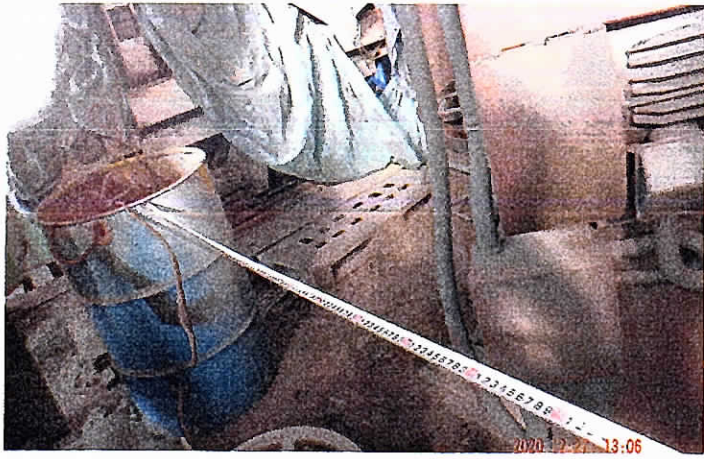
本体天井 ~ GL 1600H





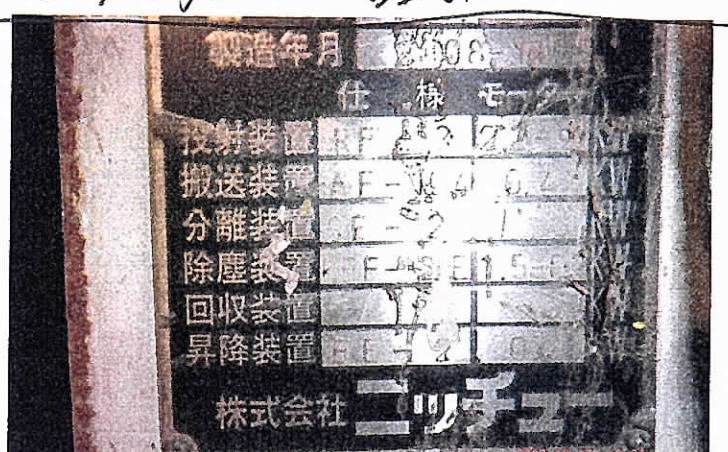
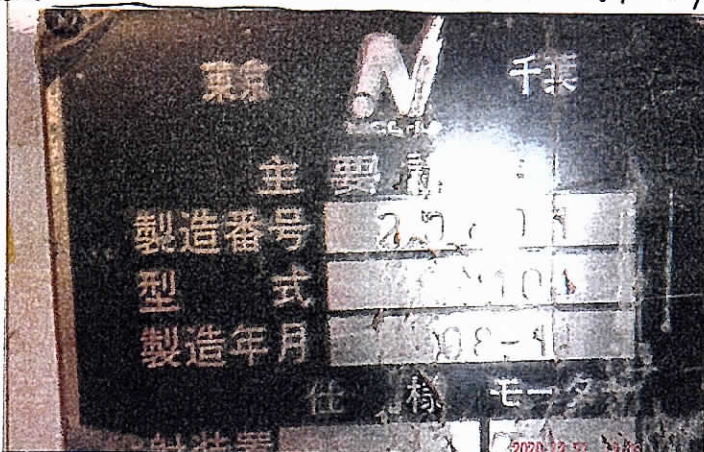
本体部～モーター～ト～ワズニ3004





〒-70321/6008 08石平廣角口-7-27-

B5部



08石平廣角口-7-27- 2008-011