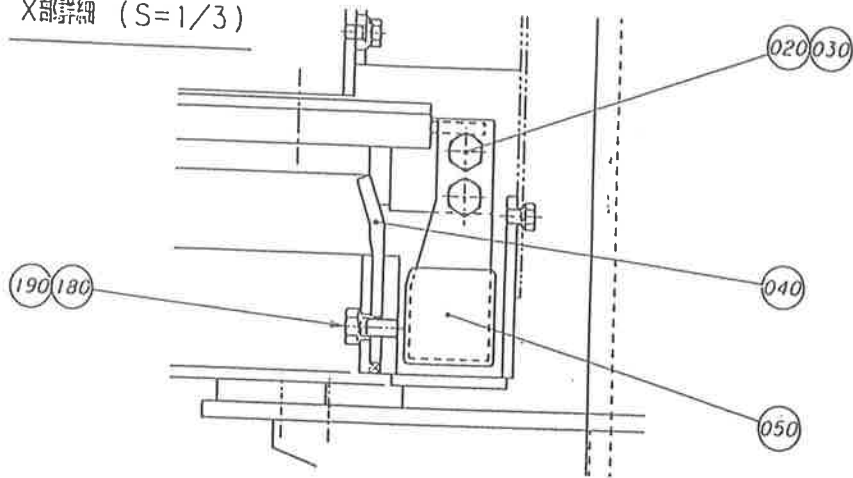
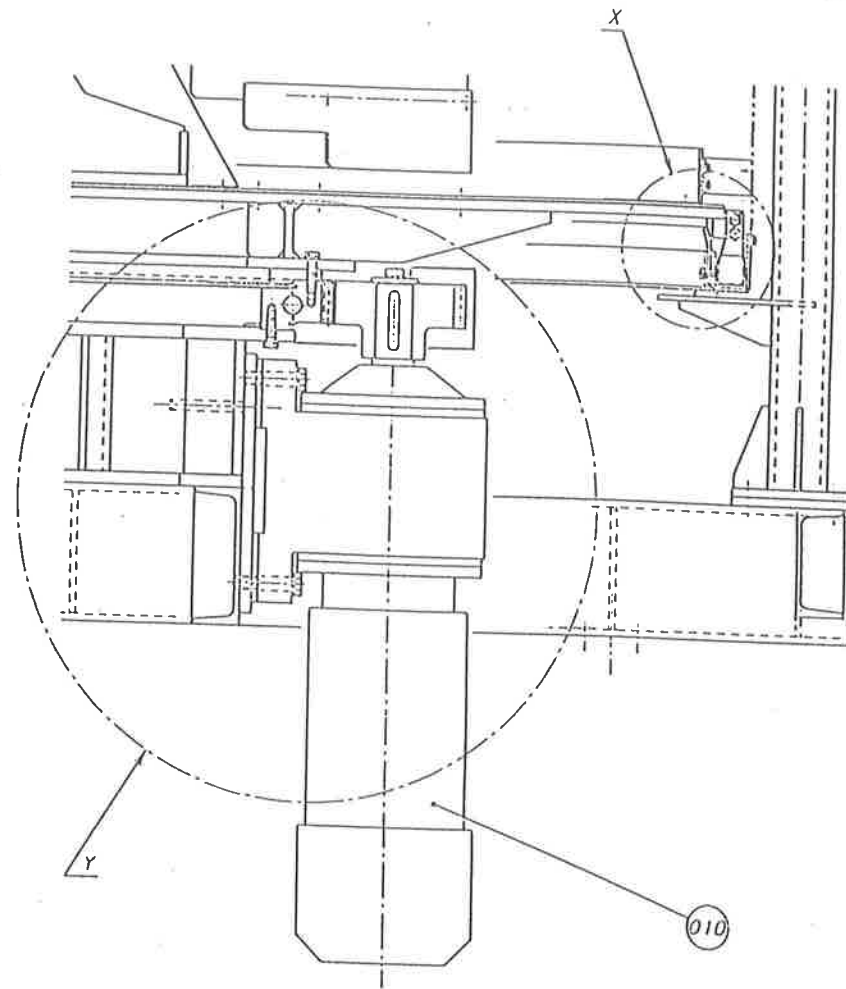
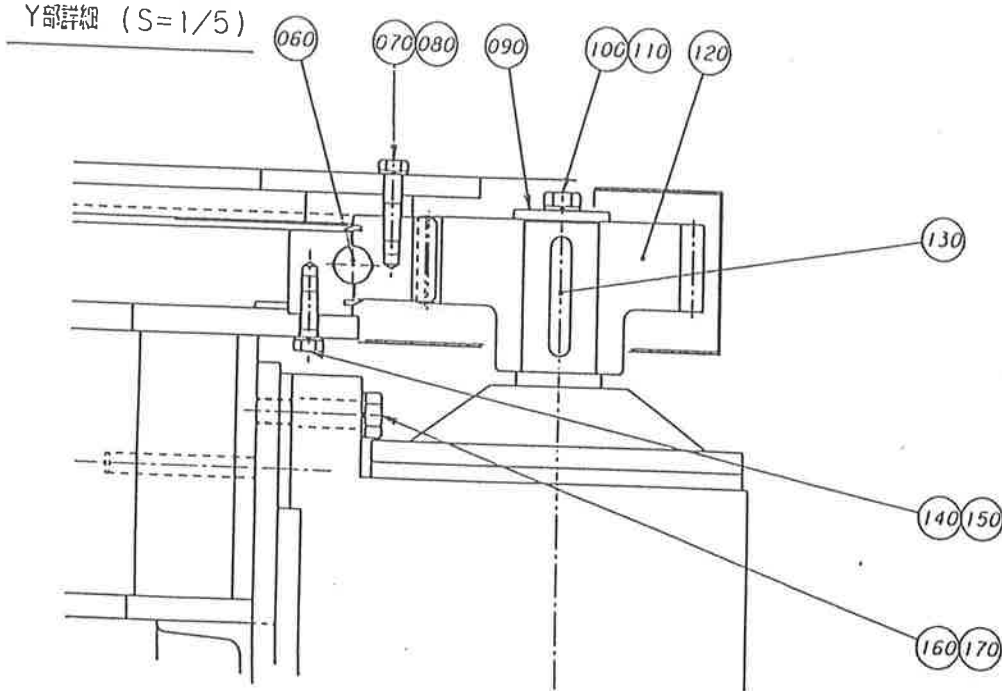


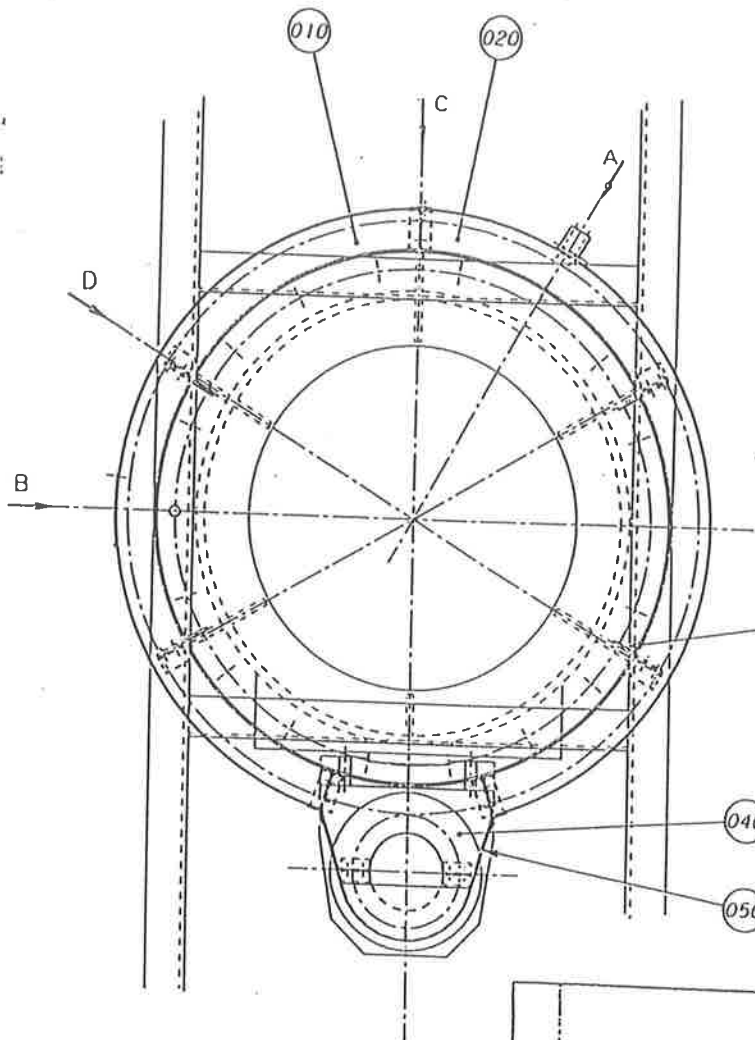
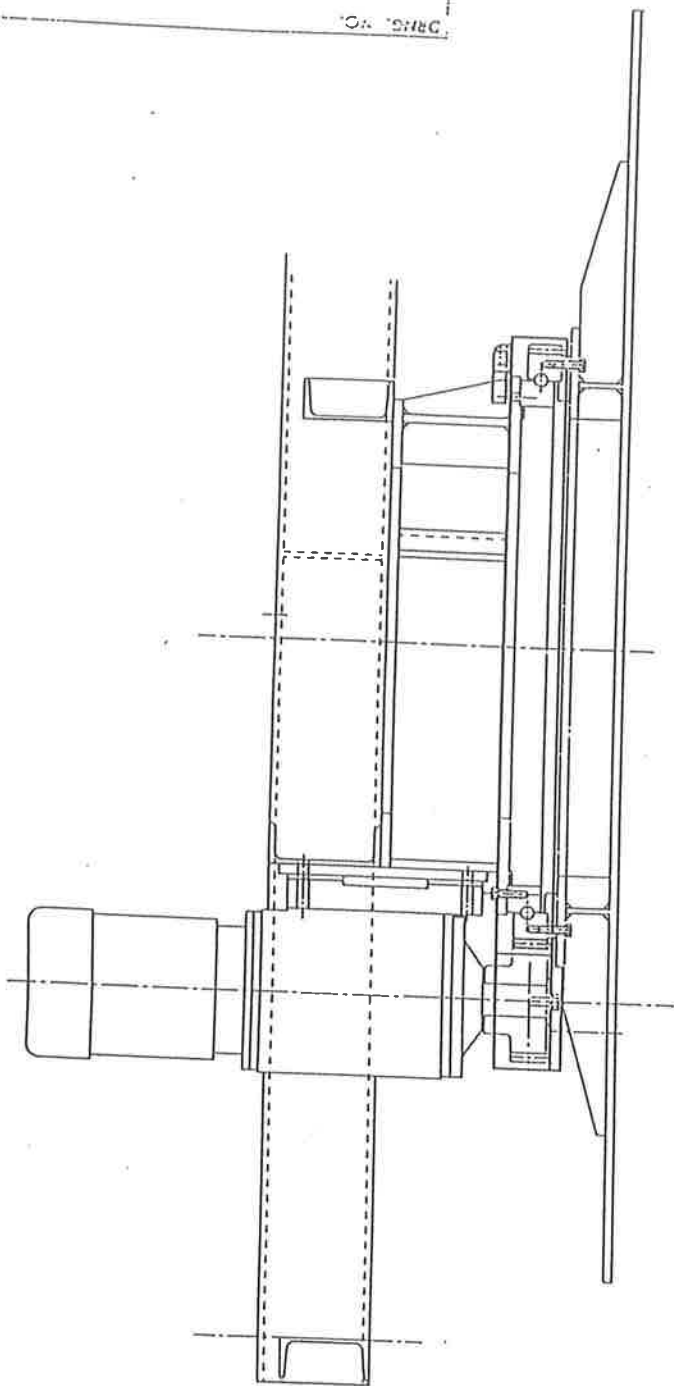
X部詳細 (S=1/3)



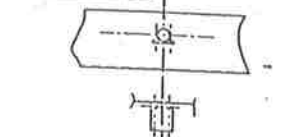
Y部詳細 (S=1/5)



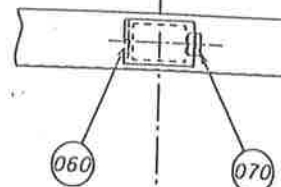
NO.	PARTS NAME	PIECES	MATERIAL	REMARKS	WEIGHT
	NIPPON EIRICH CO., LTD.				
	DATE	TITLE			
APPROVED		UE-28 型圧搾			
CHECKED		U字部、テーブル型等			
SCALE	DRAWN	DRAWING NO.			
1/15	Fukuishi	B 092153-P			
		D			



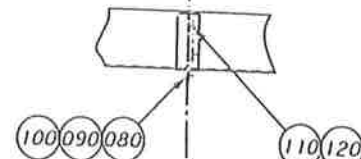
A視 スプレーノズル台座



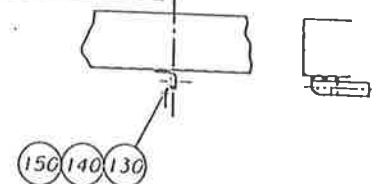
B視 点検口



C視 結合部 (3ヶ所)



D視 サポート (4ヶ所)

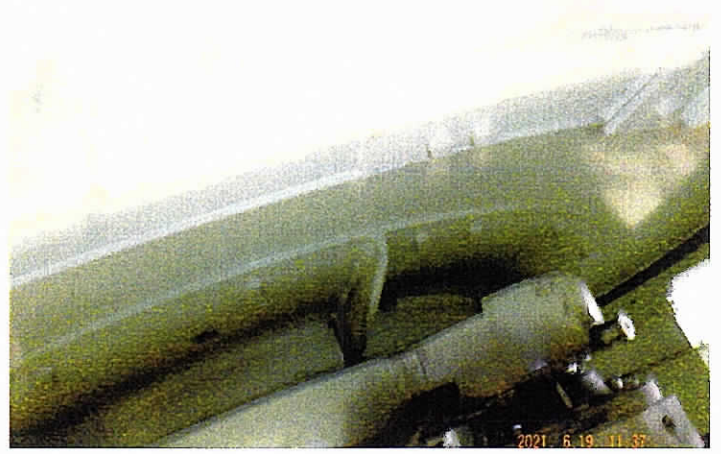


NO.	PARTS NAME	PIECES	MATERIAL	REMARKS	WEIGHT
NIPPON EIRICH CO., LTD.					
	DATE	TITLE			
		UE-28 部品図			
APPROVED		ギヤカバー			
CHECKED					
SCALE	DRAWN	DRAWING NO.			
1/15	Fukuishi	D B 092166-P			

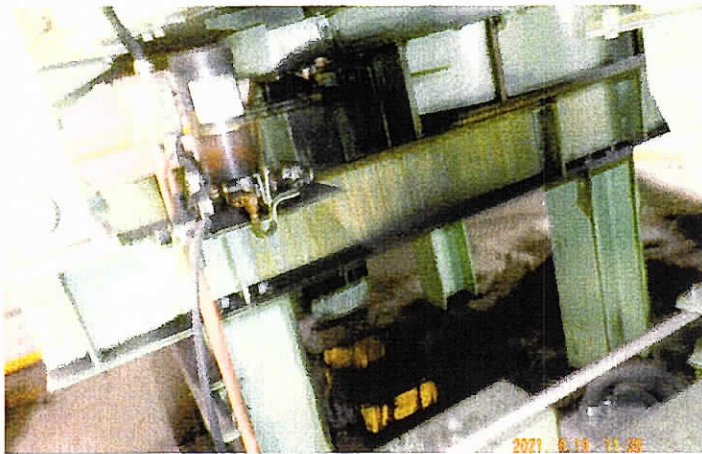




2021. 6. 19. 11:37



2021. 6. 19. 11:37



2021. 6. 19. 11:37



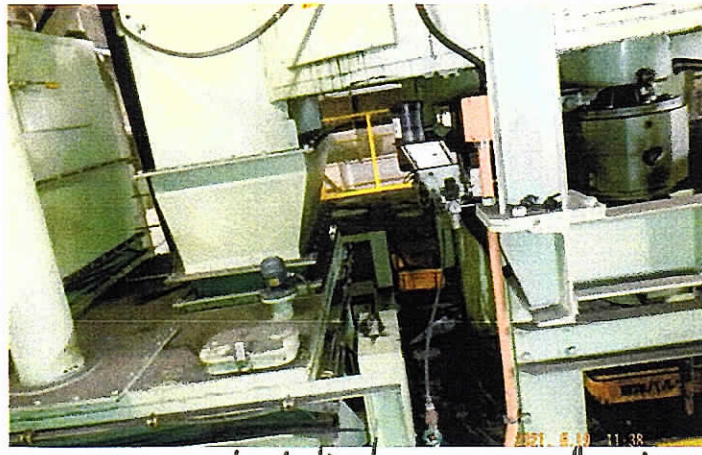
2021. 6. 19. 11:38



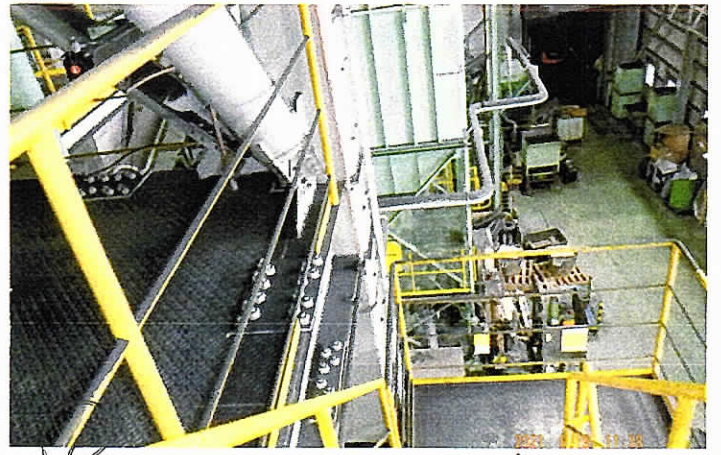
2021. 6. 19. 11:38



2021. 6. 19. 11:38



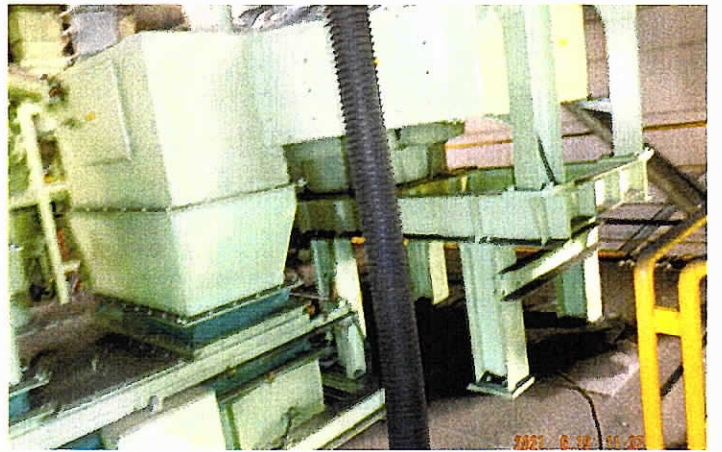
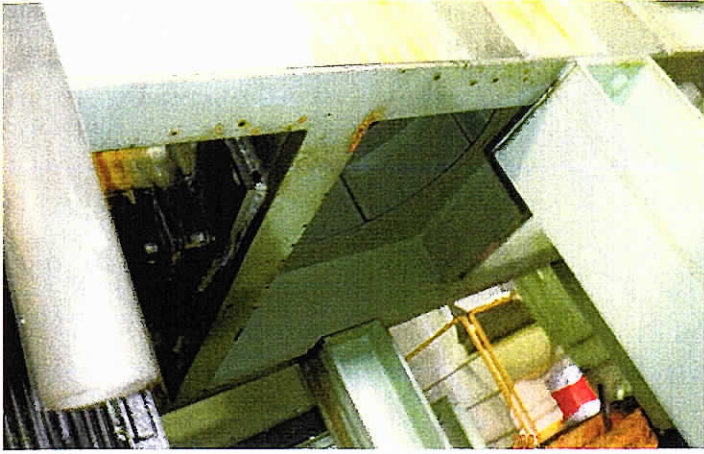
2021. 6. 19. 11:38



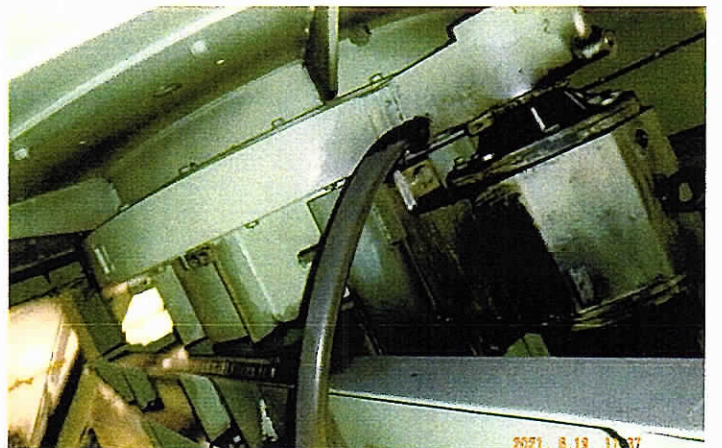
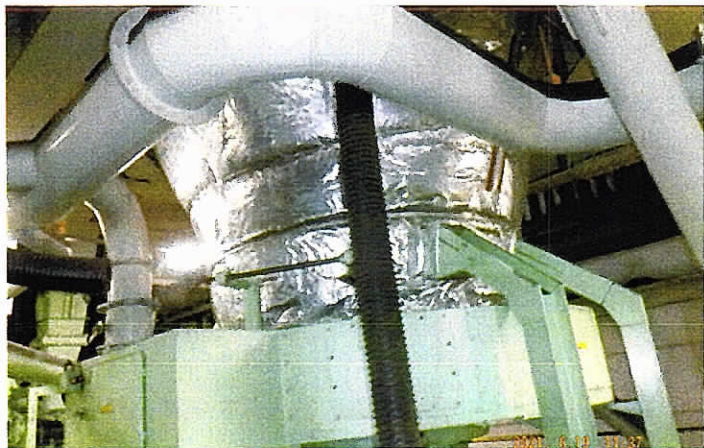
2021. 6. 19. 11:38

Handwritten notes in Japanese: 2021. 6. 19. 11:38

Handwritten notes in Japanese: 2021. 6. 19. 11:38



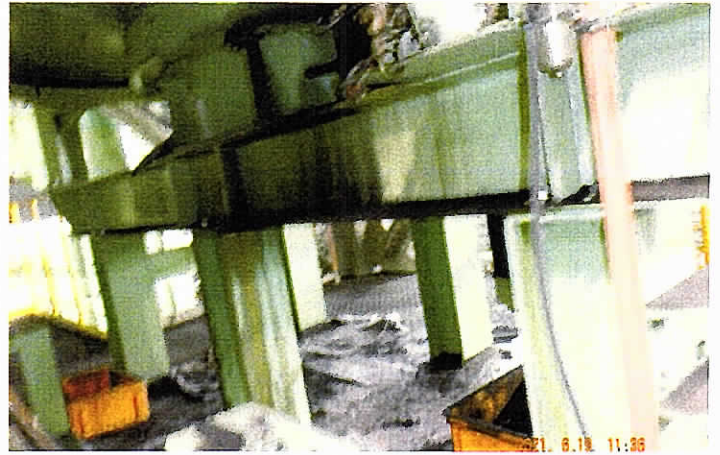
№2 421 e2



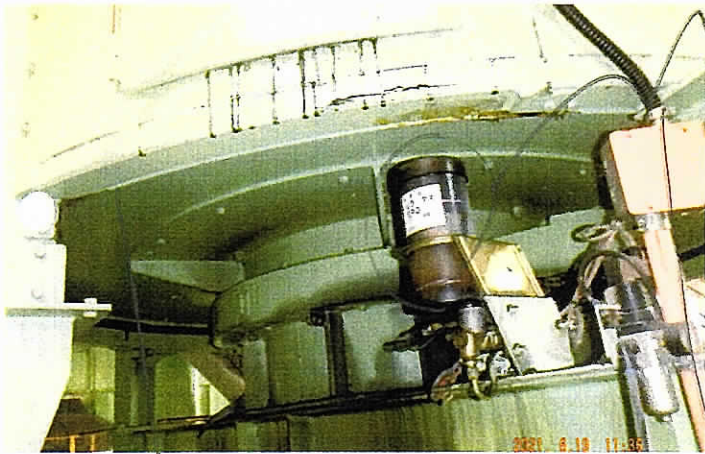
№2 421 e2



サトビ NO1.(階段地川台)



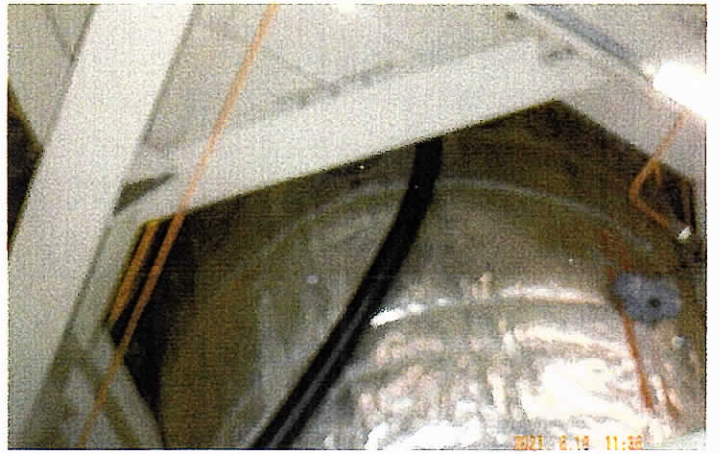
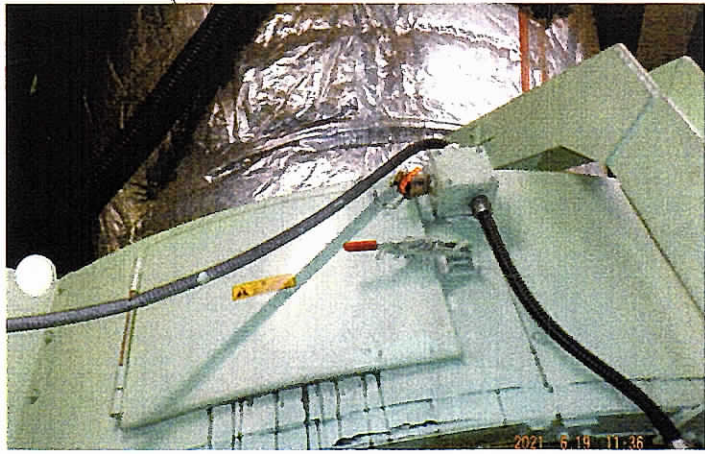
減速機



21000



サトビ 1800X 8535H 下部駆動部取付下迄



NO1 1EY720 210



減速機

