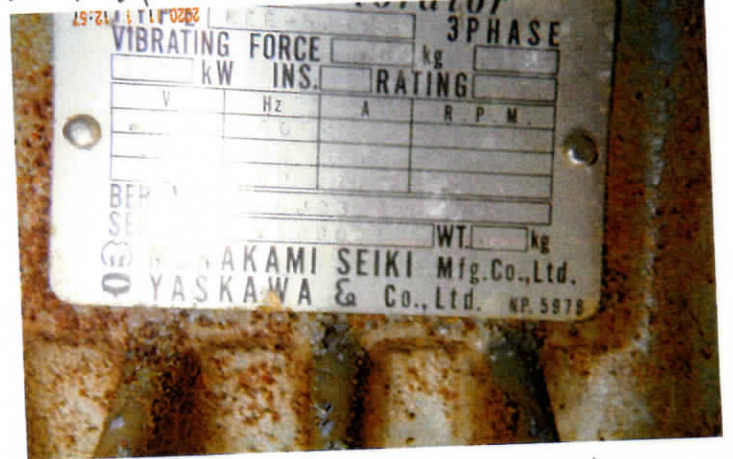
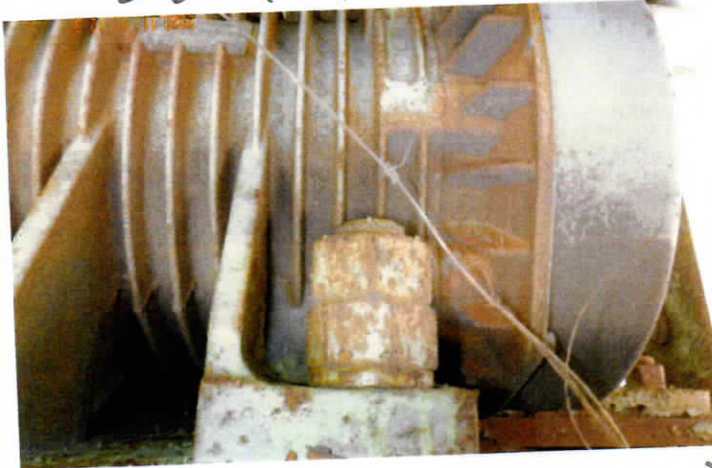
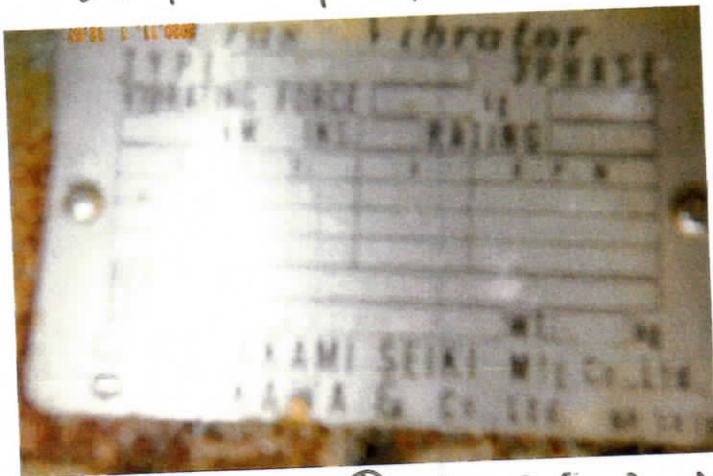


2020.11.01 同直 振動機 2.2kW x 2台 1.2kW x 2台



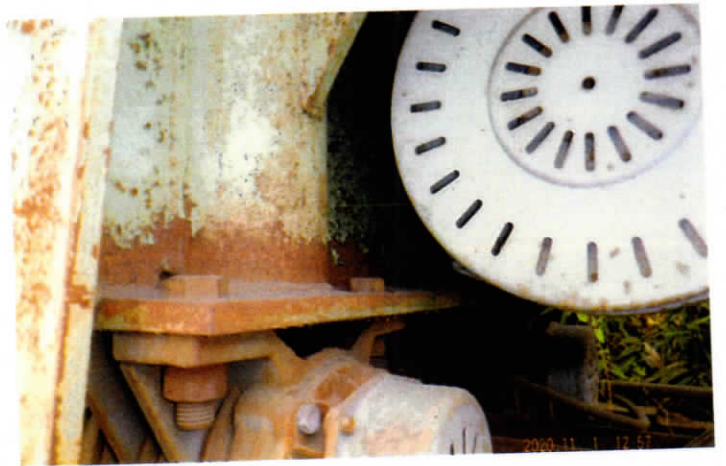
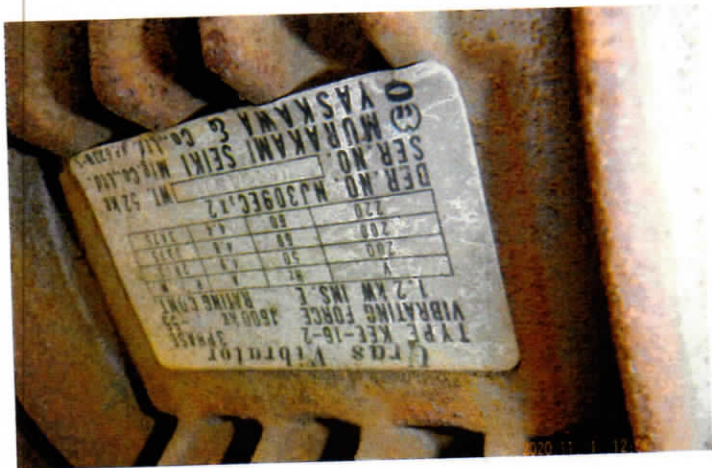
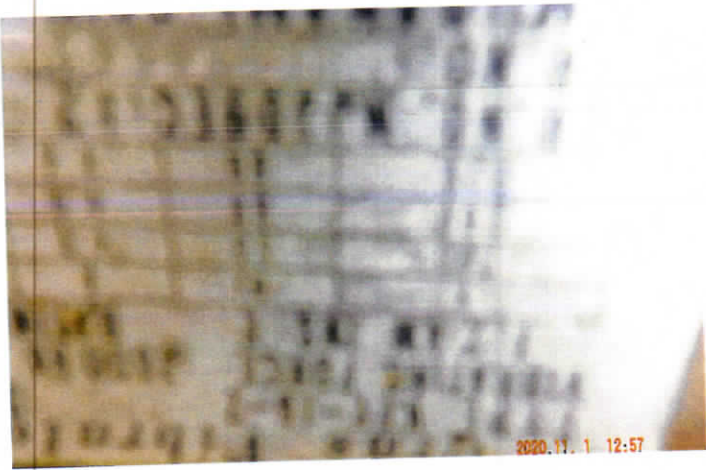
5L-1 5中 1680x1600 高さ 1520. 本体 1500x1625W



Xカ 子29. (注) 良好 (H26 初回)

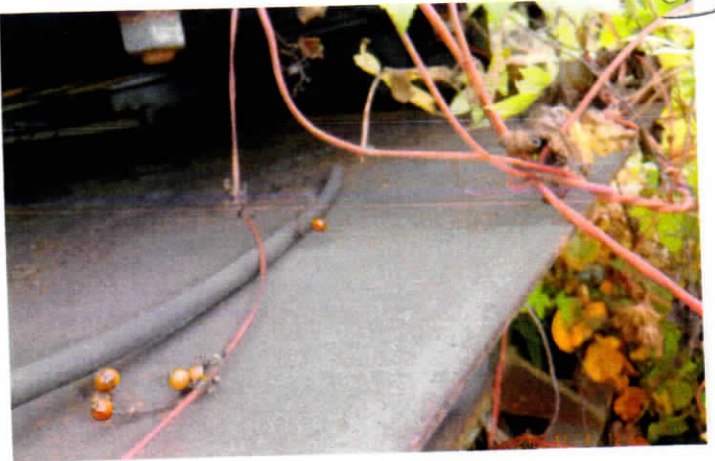


①





2020.11.1 12:58



2020.11.1 12:58



2020.11.1 12:58



2020.11.1 12:58



2020.11.1 12:58

2019年外 222 511 1680x1600. 本館. 配電盤

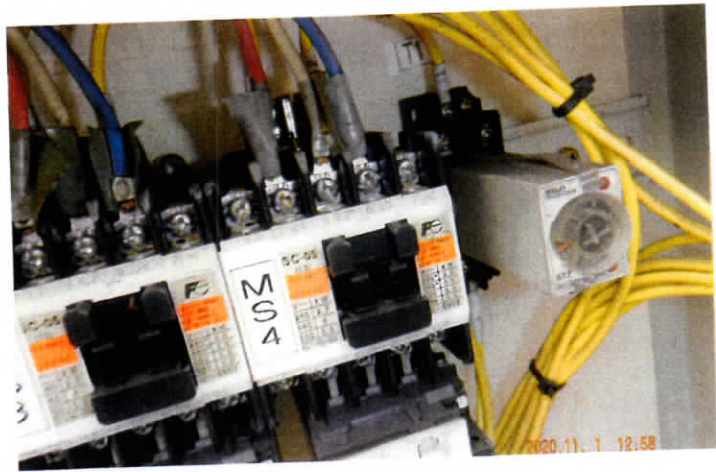
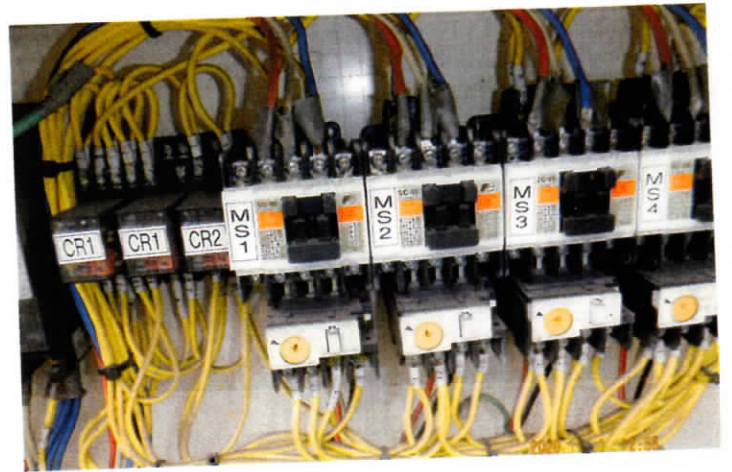
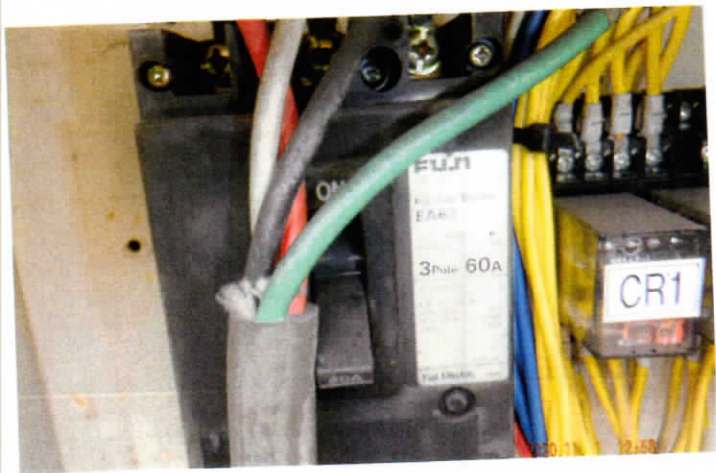
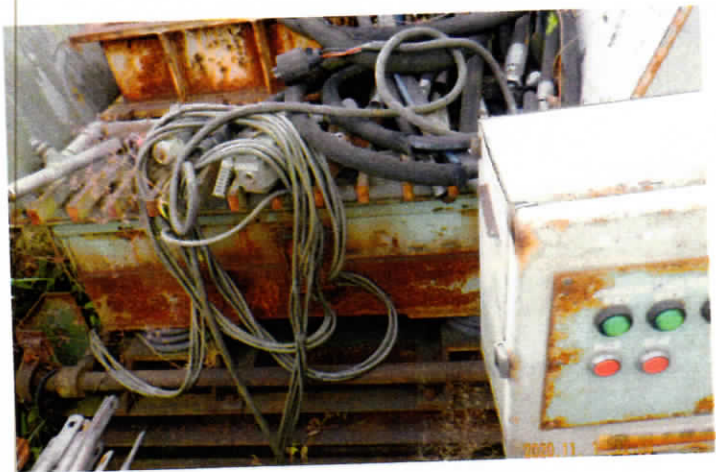


2020.11.1 12:58



2020.11.1 12:58

42



8



再距離の測定 3セト NG

